

# Technical data sheet

## Product features



### Cooking range electric square 4 zones

<b>Model</b>	<b>SAP Code</b>	00013605
--------------	-----------------	----------



- Device type: Electric unit
- Power consumption of the zone 1 [kW]: 4
- Power consumption of the zone 2 [kW]: 4
- Power consumption of the zone 3 [kW]: 4
- Power consumption of the zone 4 [kW]: 4
- Material: AISI 304

<b>SAP Code</b>	00013605	<b>Number of zones</b>	4
<b>Net Width [mm]</b>	800	<b>Power consumption of the zone 1 [kW]</b>	4
<b>Net Depth [mm]</b>	900	<b>Power consumption of the zone 2 [kW]</b>	4
<b>Net Height [mm]</b>	280	<b>Power consumption of the zone 3 [kW]</b>	4
<b>Net Weight [kg]</b>	61.00	<b>Power consumption of the zone 4 [kW]</b>	4
<b>Power electric [kW]</b>	16.000	<b>Diameter of device [mm]</b>	300
<b>Loading</b>	400 V / 3N - 50 Hz		

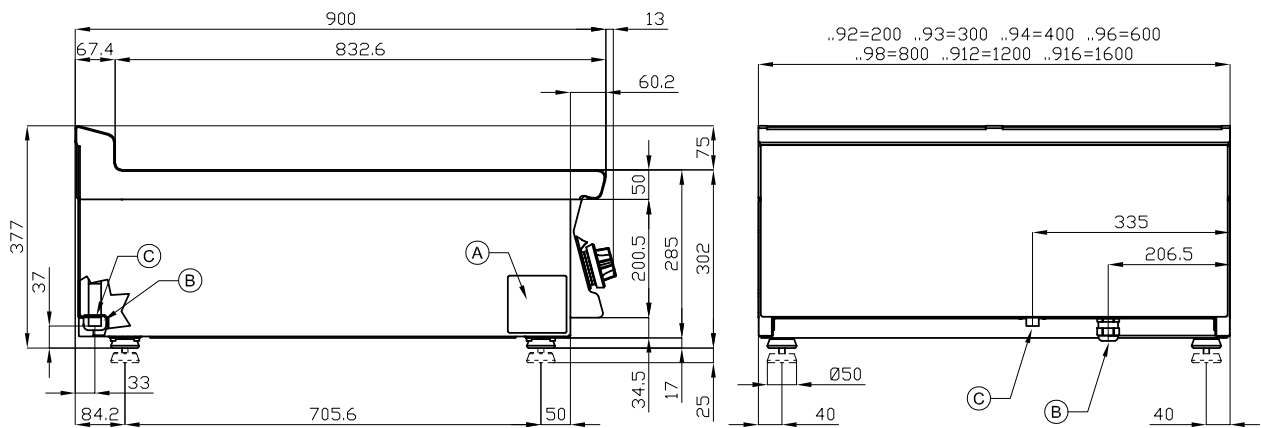
# Technical data sheet

Technical drawing



## Cooking range electric square 4 zones

<b>Model</b>	<b>SAP Code</b>	00013605
--------------	-----------------	----------



A	Data plate		B	Electrical connection	
---	------------	--	---	-----------------------	--

# Technical data sheet

Technical parameters



## Cooking range electric square 4 zones

**Model**

**SAP Code**

00013605

**1. SAP Code:**

00013605

**2. Net Width [mm]:**

800

**3. Net Depth [mm]:**

900

**4. Net Height [mm]:**

280

**5. Net Weight [kg]:**

61.00

**6. Gross Width [mm]:**

830

**7. Gross depth [mm]:**

970

**8. Gross Height [mm]:**

540

**9. Gross Weight [kg]:**

71.00

**10. Device type:**

Electric unit

**11. Power electric [kW]:**

16.000

**12. Loading:**

400 V / 3N - 50 Hz

**13. Device color:**

Stainless steel

**14. Material:**

AISI 304

**15. Worktop type:**

Molded - comfortable cleaning maintenance

**16. Worktop material:**

AISI 304

**17. Worktop Thickness [mm]:**

2.00

**18. Number of zones:**

4

**19. Power consumption of the zone 1 [kW]:**

4

**20. Power consumption of the zone 2 [kW]:**

4

**21. Power consumption of the zone 3 [kW]:**

4

**22. Power consumption of the zone 4 [kW]:**

4

**23. Maximum device temperature [°C]:**

300

**24. Minimum device temperature [°C]:**

50

**25. Number of power control stages:**

7

**26. Safety element:**

internal thermostatic protection of the hotplate against overheating

**27. Adjustable feet:**

Yes

**28. Number of burners/hot plates:**

4

# Technical data sheet

Technical parameters



## Cooking range electric square 4 zones

<b>Model</b>	<b>SAP Code</b>	00013605
--------------	-----------------	----------

### 29. Diameter of device [mm]:

300

### 30. Type of electric cooking zones:

Squared