

Technical data sheet

Product features



Rack conveyor dishwasher 270 racks/hour cold water, right exit

Model	SAP Code	00014493
--------------	-----------------	----------



- Display type: LCD ProSmart soft touch
- Number of programs: 4
- Number of skin: 2
- Maximal rack feed [racks/h]: 270
- Door clear height [mm]: 450
- Rack size [mm]: 500 x 500
- Water consumption of the washing cycle: 0,8 - 1,1
- Washing cycle time [s]: 13 - 25
- Detergent and rinse pump system: ProDose - accurate dosing with a peristaltic pump
- Wash pump type: two-way - DuoFlow
- Detergent dispenser: Yes
- Rinse aid dispenser: Yes

SAP Code	00014493	Boiler power [kW]	22.000
Net Width [mm]	2519	Basin volume [l]	70
Net Depth [mm]	770	Tank power [kW]	10.500
Net Height [mm]	1615	Water consumption of the washing cycle	0,8 - 1,1
Net Weight [kg]	383.00	Washing cycle time [s]	13 - 25
Power electric [kW]	37.700	Maximal rack feed [racks/h]	270
Loading	400 V / 3N - 50 Hz	Door clear height [mm]	450
Boiler capacity [l]	17.00	Rack size [mm]	500 x 500

Technical data sheet

Technical drawing

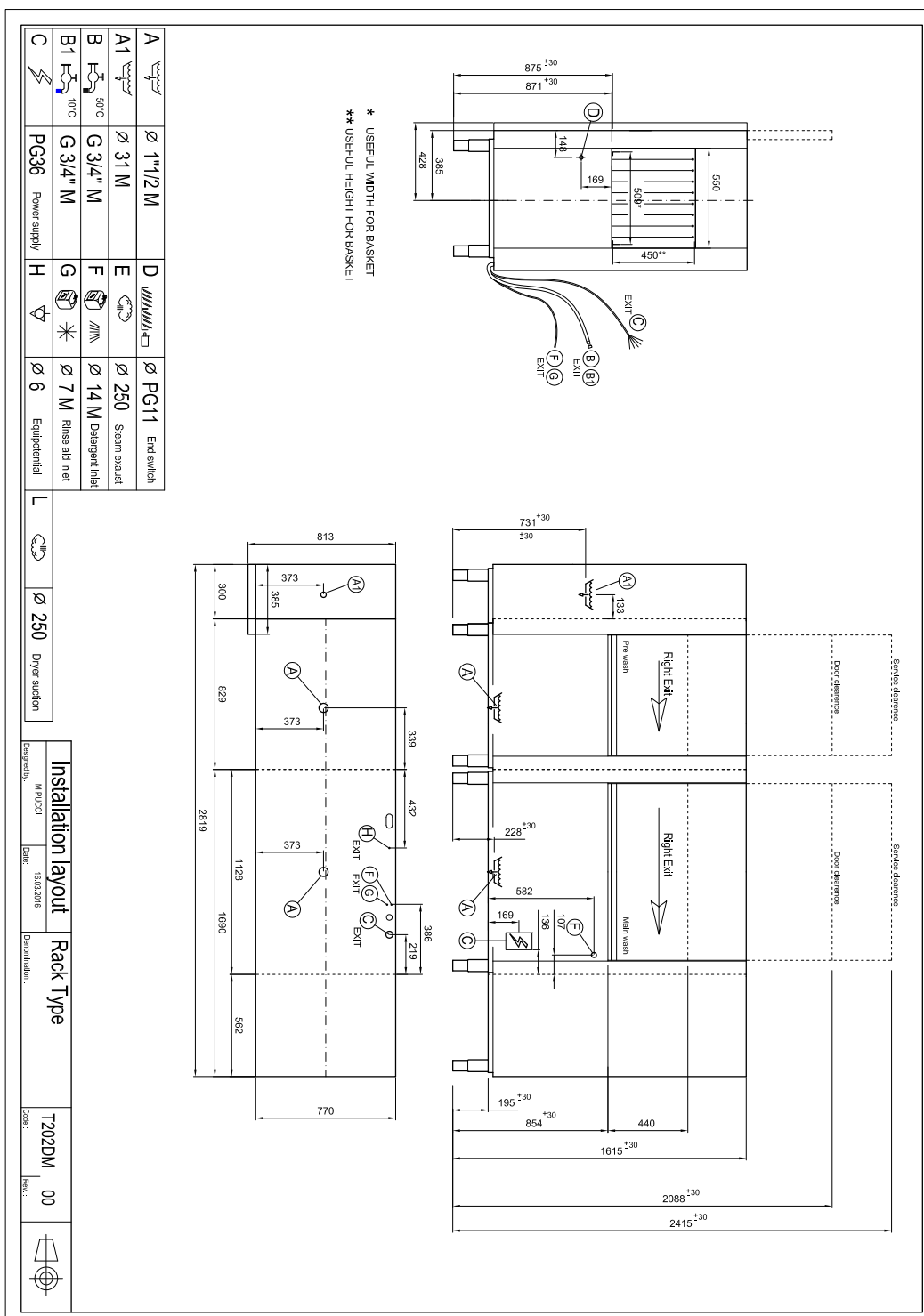


Rack conveyor dishwasher 270 racks/hour cold water, right exit

Model

SAP Code

00014493



Technical data sheet

Product benefits



Rack conveyor dishwasher 270 racks/hour cold water, right exit

Model	SAP Code	00014493
-------	----------	----------

- 1 Stainless steel outer shell construction**

round construction with stainless steel, rounded edges, Deep-drawn bathtub

 - easy cleaning, high hygiene standard, long service life
- 2 LED Display**

proScreen 4 local display + 2 LED strips

 - easy control of the dishwasher operation
 - continuous information on the status of the wash cycle
 - diagnostics in the event of a fault
- 3 Detergent dispensers**

two detergent and rinse aid dispensers

 - precise chemical dosing by ProDose - precise dosing system for detergent and rinse aid by peristaltic pump setting of values via control panel
- 4 Double filter system**

the chamber filter and the waste filter together with the ArchiMedes system provide a discharge system with increased water purification efficiency

 - higher washing efficiency; longer life of the washing bath
- 5 Energy saving**

Energy Saving energy saving system due to lowering the temperature of the boiler

 - cost saving
- 6 Protection of fragile dishes**

softStart system of gradual start of washing programs to protect fragile dishes

 - protects stemmed glasses and other fragile utensils
- 7 Possibility of recovery**

saving up to 40% of boiler energy
improves the comfort environment of the workplace environment without steam
saves water

 - saving on energy and water costs; environmentally friendly system; safe system; pleasant workplace
- 8 Fast heating**

Performance management allows the current running of the boiler and basins body

 - quick first warm-up of the dishwasher
 - smooth operation
- 9 Air break tank**

the open system of the boiler rinse, in cooperation with the rinse pump, ensures a constant pressure and temperature of the rinse

 - possibility to use in HACCP systems water temperature suitable for sterilization
- 10 Sliding system**

a sliding system that moves the baskets through individual washing zones, the possibility to connect the drive to automatic tables

 - quick distribution of dirty dishes

Technical data sheet

Technical parameters



Rack conveyor dishwasher 270 racks/hour cold water, right exit

Model	SAP Code	00014493
-------	----------	----------

1. SAP Code:

00014493

2. Article group:

Tunel dishwasher line CT

3. Net Width [mm]:

2519

4. Net Depth [mm]:

770

5. Net Height [mm]:

1615

6. Net Weight [kg]:

383.00

7. Gross Width [mm]:

3100

8. Gross depth [mm]:

920

9. Gross Height [mm]:

1850

10. Gross Weight [kg]:

420.00

11. Device type:

Electric unit

12. Control type:

Digital

13. Material:

AISI 304

14. Power electric [kW]:

37.700

15. Loading:

400 V / 3N - 50 Hz

16. Number of programs:

4

17. Opening of device:

Retractable up

18. Door clear height [mm]:

450

19. Inlet pressure:

2-4bar

20. Adjustable feet:

Yes

21. Number of skin:

2

22. Modular construction:

Yes

23. Pre-wash module:

Yes

24. Maximal rack feed [racks/h]:

270

25. Self-cleaning cycle:

No

26. Boiler capacity [l]:

17.00

27. Boiler power [kW]:

22.000

28. Basin volume [l]:

70

Technical data sheet

Technical parameters



Rack conveyor dishwasher 270 racks/hour cold water, right exit

Model	SAP Code	00014493
-------	----------	----------

29. Tank power [kW]:

10,500

30. Number of washing arms:

5

31. Number of rinsing arms:

6

32. Washing arm type:

Firm

33. Washing arm material:

Stainless steel

34. Atmospheric boiler with rinse pump:

Yes

35. Rinsing arm type:

Firm

36. Rinsing arm material:

Stainless steel

37. Deep drawn tank:

Yes

38. Rack support:

welded

39. Tank surface strainers:

stainless steel

40. Boiler thermostat adjust:

Yes

41. Rack feed capacity:

140-200-270

42. Detergent and rinse pump system:

ProDose - accurate dosing with a peristaltic pump

43. Hot water electric valve:

Yes

44. Rack size [mm]:

500 x 500

45. Min supply water temperature [°C]:

10

46. Max supply water temperature [°C]:

40

47. Display type:

LCD ProSmart soft touch

48. USB port:

Yes, for Firmware actualisation

49. Self-diagnostics:

Yes

50. Double rinse:

Yes

51. Wash pump type:

two-way - DuoFlow

52. Detergent dispenser:

Yes

53. Rinse aid dispenser:

Yes

54. Water consumption of the washing cycle:

0,8 - 1,1

55. Washing cycle time [s]:

13 - 25

56. Rinse water temperature [°C]:

82

Technical data sheet

Technical parameters



Rack conveyor dishwasher 270 racks/hour cold water, right exit

Model

SAP Code

00014493

57. Standard equipment for device:

1x glass basket, 1x plate basket, 1x cutlery basket

58. Additional information:

High-performance pre-wash module XL

59. Program ProSpeed:

No

60. Program ProFessional:

No

61. Program ProFessional 2:

No

62. Program ProFessional 4:

No

63. Program ProFessional 6:

No

64. Program ProFessional 8:

No

65. Program ProFessional 10:

No

66. Program ProTemp:

No

67. Program ProSelf:

No

68. Program ProClean:

No

69. Program ProDrain:

No

70. Program ProEco:

No

71. Program ProNew:

No

72. Program ProLong:

No

73. Program ProGlass:

No

74. Program ProPlates:

No

75. Program ProCold:

No

76. Program ProWater:

No

77. Program ProActive:

No

78. Program ProActive 5:

No

79. Program ProActive 7:

No

80. Program ProSteel:

No

81. Program ProSan:

No

82. Program High Capacity:

Yes

83. Program General purpose:

Yes

84. Program Prolonged contact (DIN 10534):

Yes

Technical data sheet

Technical parameters



Rack conveyor dishwasher 270 racks/hour cold water, right exit

Model	SAP Code	00014493
--------------	-----------------	----------

85. Program Glasses:

Yes