

Technical data sheet

Product features



Bain marie electric GN 1/1 + 1/3 - 150 with cabinet

Model	SAP Code	00000073
--------------	-----------------	----------



- Water inlet: mechanical tap
- Drain type: Trough the cabinet
- Drain: Yes
- Material: AISI 304
- Protection of controls: IPX5
- Maximum device temperature [°C]: 90

SAP Code	00000073	Power electric [kW]	2.850
Net Width [mm]	400	Loading	230 V / 1N - 50 Hz
Net Depth [mm]	900	Number of GN / EN	2
Net Height [mm]	900	GN / EN size in device	GN 1/1 + GN1/3
Net Weight [kg]	46.00	GN device depth	150

Technical data sheet

Technical drawing

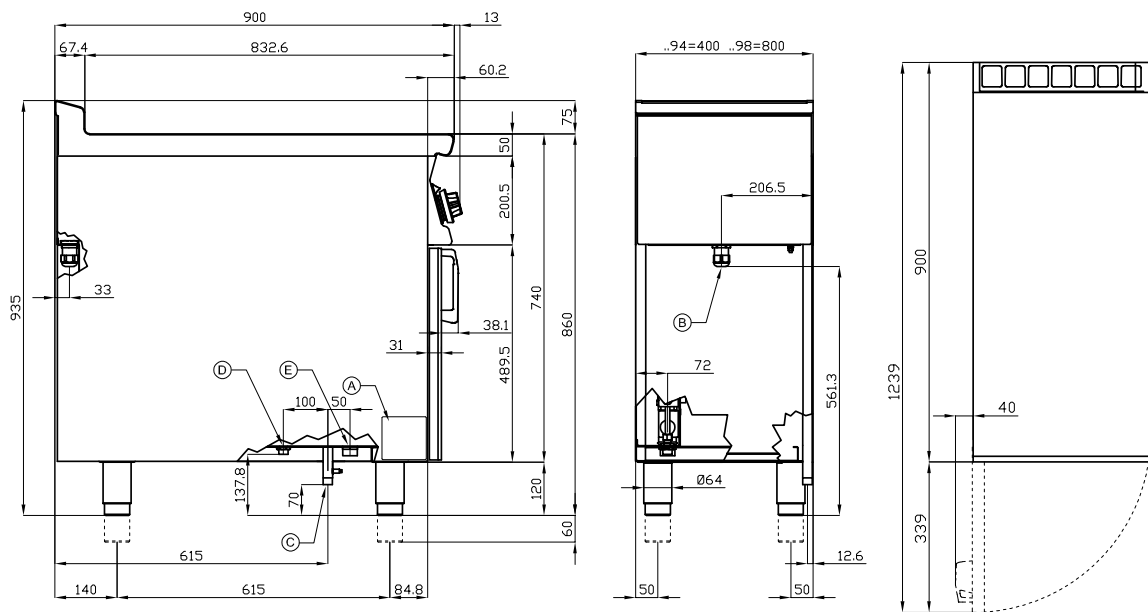


Bain marie electric GN 1/1 + 1/3 - 150 with cabinet

Model

SAP Code

00000073



A	Data plate		B	Electrical connection	
D	Cold water connection	ISO 7-1 1/2" M	E	Water drainage	ISO 7-1 1" M

Technical data sheet

Product benefits



Bain marie electric GN 1/1 + 1/3 - 150 with cabinet

Model

SAP Code

0000073

1

Deep-draft bathtubs

basins without sharp transitions, edges and corners

- easy maintenance
- perfect sanitation

2

All-stainless steel construction

harmless to health for contact with food
robustness

- perfect sanitation
- long service life

3

Drain valve with snap-on elbow for easy draining

safer placement of the drain valve

- valve location and use of an elbow and safety lock prevent unintentional contact and possible scalding

Technical data sheet

Technical parameters



Bain marie electric GN 1/1 + 1/3 - 150 with cabinet

Model

SAP Code

00000073

1. SAP Code:

00000073

2. Net Width [mm]:

400

3. Net Depth [mm]:

900

4. Net Height [mm]:

900

5. Net Weight [kg]:

46.00

6. Gross Width [mm]:

430

7. Gross depth [mm]:

970

8. Gross Height [mm]:

1110

9. Gross Weight [kg]:

52.00

10. Device type:

Electric unit

11. Construction type of device:

With substructure

12. Power electric [kW]:

2.850

13. Loading:

230 V / 1N - 50 Hz

14. Protection of controls:

IPX5

15. Device color:

Stainless steel

16. Material:

AISI 304

17. Indicators:

operation and warm-up

18. Worktop type:

Molded - comfortable cleaning maintenance

19. Maximum device temperature [°C]:

90

20. Minimum device temperature [°C]:

30

21. Safety thermostat:

Yes

22. Adjustable feet:

Yes

23. Heating element material:

AISI 304

24. Number of basins:

1

25. Ratio power/volume [kW/l]:

1.50

26. Water inlet:

mechanical tap

27. Drain type:

Trough the cabinet

28. Drain:

Yes

Technical data sheet

Technical parameters



Bain marie electric GN 1/1 + 1/3 - 150 with cabinet

Model

SAP Code

00000073

29. Number of GN / EN:

2

31. GN device depth:

150

30. GN / EN size in device:

GN 1/1 + GN1/3