

# Technical data sheet

## Product features



### Rack conveyor dishwasher 270 racks/hour cold water, right exit

<b>Model</b>	<b>SAP Code</b>	00014487
--------------	-----------------	----------



- Display type: ProSmart LED interface
- Number of programs: 4
- Number of skin: 2
- Maximal rack feed [racks/h]: 270
- Door clear height [mm]: 450
- Rack size [mm]: 500 x 500
- Water consumption of the washing cycle: 1,1 - 1,9
- Washing cycle time [s]: 13 - 32
- Detergent and rinse pump system: ProDose - accurate dosing with a peristaltic pump
- Wash pump type: two-way - DuoFlow
- Detergent dispenser: Yes
- Rinse aid dispenser: Yes

<b>SAP Code</b>	00014487	<b>Boiler power [kW]</b>	27.000
<b>Net Width [mm]</b>	1968	<b>Basin volume [l]</b>	70
<b>Net Depth [mm]</b>	770	<b>Tank power [kW]</b>	10.500
<b>Net Height [mm]</b>	1615	<b>Water consumption of the washing cycle</b>	1,1 - 1,9
<b>Net Weight [kg]</b>	311.00	<b>Washing cycle time [s]</b>	13 - 32
<b>Power electric [kW]</b>	41.200	<b>Maximal rack feed [racks/h]</b>	270
<b>Loading</b>	400 V / 3N - 50 Hz	<b>Door clear height [mm]</b>	450
<b>Boiler capacity [ l ]</b>	17.00	<b>Rack size [mm]</b>	500 x 500

# Technical data sheet

Technical drawing

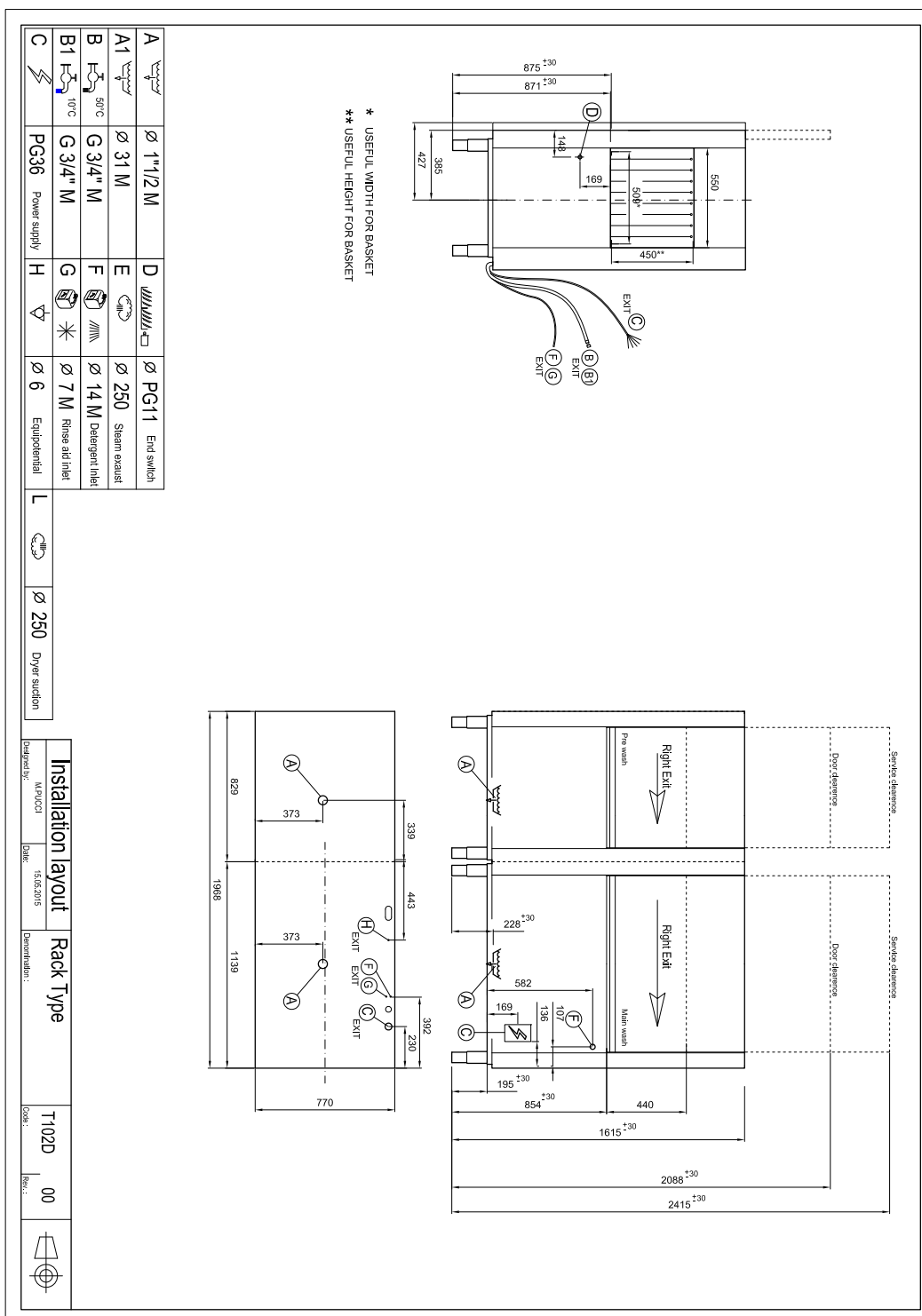


## Rack conveyor dishwasher 270 racks/hour cold water, right exit

Model

SAP Code

00014487



# Technical data sheet

## Product benefits



### Rack conveyor dishwasher 270 racks/hour cold water, right exit

Model

SAP Code

00014487

1

#### Stainless steel outer shell construction

- round construction with stainless steel, rounded edges, Deep-drawn bathtub
- easy cleaning, high hygiene standard, long service life

2

#### LED Display

- proScreen 4 local display + 2 LED strips
- easy control of the dishwasher operation
  - continuous information on the status of the wash cycle
  - diagnostics in the event of a fault

3

#### Detergent dispensers

- two detergent and rinse aid dispensers
- precise chemical dosing by ProDose - precise dosing system for detergent and rinse aid by peristaltic pump setting of values via control panel

4

#### Double filter system

- the chamber filter and the waste filter together with the ArchiMedes system provide a discharge system with increased water purification efficiency
- higher washing efficiency; longer life of the washing bath

5

#### Energy saving

- Energy Saving energy saving system due to lowering the temperature of the boiler
- cost saving

6

#### Protection of fragile dishes

- softStart system of gradual start of washing programs to protect fragile dishes
- protects stemmed glasses and other fragile utensils

7

#### Possibility of recovery

- saving up to 40% of boiler energy  
improves the comfort environment of the workplace  
environment without steam  
saves water
- saving on energy and water costs; environmentally friendly system; safe system; pleasant workplace

8

#### Fast heating

- Performance management allows the current running of the boiler and basins body
- quick first warm-up of the dishwasher
  - smooth operation

9

#### Air break tank

- the open system of the boiler rinse, in cooperation with the rinse pump, ensures a constant pressure and temperature of the rinse
- possibility to use in HACCP systems water temperature suitable for sterilization

10

#### Sliding system

- a sliding system that moves the baskets through individual washing zones, the possibility to connect the drive to automatic tables
- quick distribution of dirty dishes

# Technical data sheet

Technical parameters



## Rack conveyor dishwasher 270 racks/hour cold water, right exit

Model	SAP Code	00014487
-------	----------	----------

**1. SAP Code:**

00014487

**2. Article group:**

Tunel dishwasher line CT

**3. Net Width [mm]:**

1968

**4. Net Depth [mm]:**

770

**5. Net Height [mm]:**

1615

**6. Net Weight [kg]:**

311.00

**7. Gross Width [mm]:**

2100

**8. Gross depth [mm]:**

920

**9. Gross Height [mm]:**

1850

**10. Gross Weight [kg]:**

348.00

**11. Device type:**

Electric unit

**12. Control type:**

Digital

**13. Material:**

AISI 304

**14. Power electric [kW]:**

41.200

**15. Loading:**

400 V / 3N - 50 Hz

**16. Number of programs:**

4

**17. Opening of device:**

Retractable up

**18. Door clear height [mm]:**

450

**19. Inlet pressure:**

2-4bar

**20. Adjustable feet:**

Yes

**21. Number of skin:**

2

**22. Modular construction:**

Yes

**23. Pre-wash module:**

Yes

**24. Maximal rack feed [racks/h]:**

270

**25. Self-cleaning cycle:**

No

**26. Boiler capacity [ l ]:**

17.00

**27. Boiler power [kW]:**

27.000

**28. Basin volume [l]:**

70

# Technical data sheet

## Technical parameters



### Rack conveyor dishwasher 270 racks/hour cold water, right exit

Model	SAP Code	00014487
-------	----------	----------

**29. Tank power [kW]:**

10,500

**30. Number of washing arms:**

3

**31. Number of rinsing arms:**

2

**32. Washing arm type:**

Firm

**33. Washing arm material:**

Stainless steel

**34. Atmospheric boiler with rinse pump:**

Yes

**35. Rinsing arm type:**

Firm

**36. Rinsing arm material:**

Stainless steel

**37. Deep drawn tank:**

Yes

**38. Rack support:**

welded

**39. Tank surface strainers:**

stainless steel

**40. Boiler thermostat adjust:**

Yes

**41. Rack feed capacity:**

11-135-200-270

**42. Detergent and rinse pump system:**

ProDose - accurate dosing with a peristaltic pump

**43. Hot water electric valve:**

Yes

**44. Rack size [mm]:**

500 x 500

**45. Min supply water temperature [°C]:**

10

**46. Max supply water temperature [°C]:**

40

**47. Display type:**

ProSmart LED interface

**48. USB port:**

Yes, for Firmware actualisation

**49. Self-diagnostics:**

Yes

**50. Double rinse:**

No

**51. Wash pump type:**

two-way - DuoFlow

**52. Detergent dispenser:**

Yes

**53. Rinse aid dispenser:**

Yes

**54. Water consumption of the washing cycle:**

1,1 - 1,9

**55. Washing cycle time [s]:**

13 - 32

**56. Rinse water temperature [°C]:**

82

# Technical data sheet

## Technical parameters



### Rack conveyor dishwasher 270 racks/hour cold water, right exit

**Model**

**SAP Code**

00014487

**57. Standard equipment for device:**

1x glass basket, 1x plate basket, 1x cutlery basket

**58. Additional information:**

The product comes with 1x RM Clean+ 12 kg (00012271) and 1x RM Rinse+ 10 kg (00012273) for free

**59. Program ProSpeed:**

No

**60. Program ProFessional:**

No

**61. Program ProFessional 2:**

No

**62. Program ProFessional 4:**

No

**63. Program ProFessional 6:**

No

**64. Program ProFessional 8:**

No

**65. Program ProFessional 10:**

No

**66. Program ProTemp:**

No

**67. Program ProSelf:**

No

**68. Program ProClean:**

No

**69. Program ProDrain:**

No

**70. Program ProEco:**

No

**71. Program ProNew:**

No

**72. Program ProLong:**

No

**73. Program ProGlass:**

No

**74. Program ProPlates:**

No

**75. Program ProCold:**

No

**76. Program ProWater:**

No

**77. Program ProActive:**

No

**78. Program ProActive 5:**

No

**79. Program ProActive 7:**

No

**80. Program ProSteel:**

No

**81. Program ProSan:**

No

**82. Program High Capacity:**

Yes

**83. Program General purpose:**

Yes

**84. Program Prolonged contact (DIN 10534):**

Yes

# Technical data sheet

Technical parameters



Rack conveyor dishwasher 270 racks/hour cold water, right exit

<b>Model</b>	<b>SAP Code</b>	00014487
--------------	-----------------	----------

## 85. Program Glasses:

Yes