

Technical data sheet



Product features

Boiling kettle gas indirect autoclave 100 l

Model	SAP Code	00015048
--------------	-----------------	----------

- Device type: Gas unit
- Device heating type: Indirect
- Ignition: Piezo
- Steam pressure regulation: Mechanical - the valve releases steam at high pressure
- Filling: Mechanical cock
- Jacket filling: Semi-automatic
- Drain valve diameter: 2"
- Usable volume [l]: 100

SAP Code	00015048	Power gas [kW]	22.500
Net Width [mm]	800	Type of gas	Natural gas, propane butane
Net Depth [mm]	900	Usable volume [l]	100
Net Height [mm]	900	Device heating type	Indirect
Net Weight [kg]	142.00	Steam pressure regulation	Mechanical - the valve releases steam at high pressure

Technical data sheet



Technical drawing

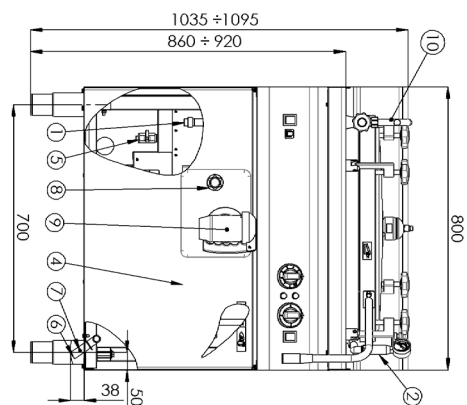
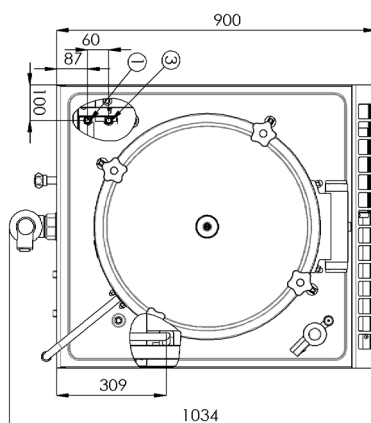
Boiling kettle gas indirect autoclave 100 l

Model

SAP Code

00015048

1 - PŘÍVOD STUDENÉ VODY	6 - PŘÍVOD PLYNU
2 - POJISTNÝ VENTIL + MONOMETER	7 - MÍSTO KONTROLY VSTUPNÍHO TLAKU PLYNU
3 - PŘÍVOD ZMĚKČELÉ VODY	8 - KONTROLNÍ KOHOUT HLADINY DUKLÁTORU
4 - PŘÍVOD NAPĚTÍ 230V	9 - VYPUSŤEČÍ KOHOUT DUKLÁTORU
5 - VYPUSŤEČÍ KOHOUT DUKLÁTORU	10 - NÁPOUŠŤEČÍ BATERIE



Technical data sheet



Technical parameters

Boiling kettle gas indirect autoclave 100 l

Model	SAP Code	00015048
--------------	-----------------	----------

1. SAP Code:

00015048

2. Article group:

RF-Line 900

3. Net Width [mm]:

800

4. Net Depth [mm]:

900

5. Net Height [mm]:

900

6. Net Weight [kg]:

142.00

7. Gross Width [mm]:

840

8. Gross depth [mm]:

970

9. Gross Height [mm]:

1160

10. Gross Weight [kg]:

157.00

11. Device type:

Gas unit

12. Construction type of device:

Stationary

13. Power gas [kW]:

22.500

14. Ignition:

Piezo

15. Type of gas:

Natural gas, propane butane

16. Protection of controls:

IPX4

17. Material:

AISI 304 top plate, AISI 430 cladding

18. Indicators:

operation and warm-up

19. Drain valve diameter:

2"

20. Worktop type:

Molded - comfortable cleaning maintenance

21. Worktop material:

AISI 304

22. Worktop Thickness [mm]:

1.50

23. Device heating type:

Indirect

24. Device capacity [l]:

100.00

25. Maximum device temperature [°C]:

90

26. Minimum device temperature [°C]:

30

27. Bottom material:

AISI 316

28. Usable volume [l]:

100

Technical data sheet



Technical parameters

Boiling kettle gas indirect autoclave 100 l

Model	SAP Code	00015048
--------------	-----------------	----------

29. Filling:

Mechanical cock

31. Steam pressure regulation:

Mechanical - the valve releases steam at high pressure

30. Jacket filling:

Semi-automatic

32. Type of drain valve:

conical