

Technical data sheet

Product features



Pasta cooker gas 40 + 40 l with cabinet

Model

SAP Code

00000367



- Basin volume [l]: 40
- Water inlet: mechanical tap
- Drain type: Trough the cabinet
- Drain: Yes
- Material: Stainless steel
- Protection of controls: IPX5
- Ignition: Piezo+veřn plamen

SAP Code	00000367	Power gas [kW]	27.900
Net Width [mm]	800	Type of gas	Natural gas, propane butane
Net Depth [mm]	900	Basin volume [l]	40
Net Height [mm]	900	Width of internal part [mm]	307
Net Weight [kg]	100.00	Depth of internal part [mm]	509
Power electric [kW]	0.040	Height of internal part [mm]	327
Loading	230 V / 1N - 50 Hz		

Technical data sheet

Technical drawing

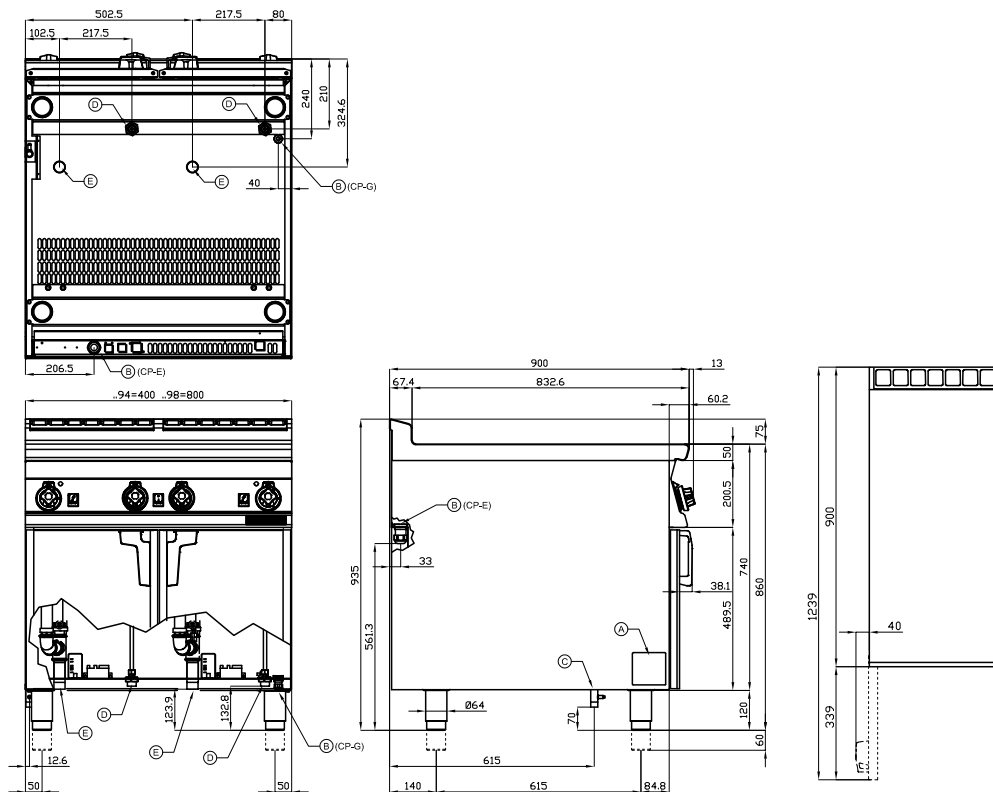


Pasta cooker gas 40 + 40 l with cabinet

Model

SAP Code

00000367



A	Data plate		B	Electrical connection	
C	Gas connection	ISO 7-1 1/2" M	D	Cold water connection	ISO 7-1 3/4" M
E	Water drainage	ISO 7-1 1" M			

Technical data sheet

Product benefits



Pasta cooker gas 40 + 40 l with cabinet

Model

SAP Code

00000367

1

All-stainless steel bathtub

long life
resistance of AISI 304 stainless steel material
the material does not cut

- savings on service interventions
- easier and faster operation

2

Degree of protection of the control elements IPX5

maintenance-free system
resistance to splash water
long life

- savings on service interventions
- easy cleaning and maintenance of equipment

3

Pressure switch microswitch

microswitch preventing the device from running when there is no water in the bath

- prevents destruction of the equipment by overheating

4

Safety element "thermocouple"

safe service for staff
there is no unnecessary gas leakage
long life

- savings on service interventions
- easier and faster operation

5

Outlet to a removable collector in the substructure with the option of connecting directly to the waste

draining the bath into a prepared container or into the waste

- easy and safe handling
- easier cleaning of the cooking vessel

6

Integrated filling of the water bath

filling valve directly above the cooking vessel

- possibility of adding water during cooking
- easier cleaning

Technical data sheet

Technical parameters



Pasta cooker gas 40 + 40 l with cabinet

Model

SAP Code

00000367

1. SAP Code:

00000367

2. Net Width [mm]:

800

3. Net Depth [mm]:

900

4. Net Height [mm]:

900

5. Net Weight [kg]:

100.00

6. Gross Width [mm]:

830

7. Gross depth [mm]:

970

8. Gross Height [mm]:

1110

9. Gross Weight [kg]:

116.00

10. Device type:

Gas unit

11. Construction type of device:

With substructure

12. Power electric [kW]:

0.040

13. Loading:

230 V / 1N - 50 Hz

14. Power gas [kW]:

27.900

15. Ignition:

Piezo+veÄřnÄř " plamen

16. Type of gas:

Natural gas, propane butane

17. Protection of controls:

IPX5

18. Device color:

Stainless steel

19. Material:

Stainless steel

20. Indicators:

operation and warm-up

21. Worktop type:

Molded - comfortable cleaning maintenance

22. Basin volume [l]:

40

23. Basin dimensions [mm x mm x mm]:

307 x 509 x 327

24. Safety thermocouple:

Yes

25. Adjustable feet:

Yes

26. Heating element material:

AISI 304

27. Number of basins:

2

28. Basin material:

AISI 316 - Stainless steel highly resistant to salt water

Technical data sheet

Technical parameters



Pasta cooker gas 40 + 40 l with cabinet

Model

SAP Code

00000367

29. Ratio power/volume [kW/l]:

27.90

33. Drain:

Yes

30. Heating element construction:

Swivel

34. Width of internal part [mm]:

307

31. Water inlet:

mechanical tap

35. Depth of internal part [mm]:

509

32. Drain type:

Trough the cabinet

36. Height of internal part [mm]:

327