

Technical data sheet

Product features



Rack conveyor dishwasher 120 racks/hour hot water, right exit

Model	SAP Code	00014492
--------------	-----------------	----------



- Display type: ProSmart LED interface
- Number of programs: 2
- Number of skin: 2
- Maximal rack feed [racks/h]: 120
- Door clear height [mm]: 450
- Rack size [mm]: 500 x 500
- Water consumption of the washing cycle: 1,3 - 2,7
- Washing cycle time [s]: 30 - 60
- Detergent and rinse pump system: ProDose - accurate dosing with a peristaltic pump
- Wash pump type: two-way - DuoFlow
- Detergent dispenser: Yes
- Rinse aid dispenser: Yes

SAP Code	00014492	Boiler power [kW]	9.500
Net Width [mm]	1150	Basin volume [l]	70
Net Depth [mm]	770	Tank power [kW]	10.500
Net Height [mm]	1588	Water consumption of the washing cycle	1,3 - 2,7
Net Weight [kg]	176.00	Washing cycle time [s]	30 - 60
Power electric [kW]	22.000	Maximal rack feed [racks/h]	120
Loading	400 V / 3N - 50 Hz	Door clear height [mm]	450
Boiler capacity [l]	17.00	Rack size [mm]	500 x 500

Technical data sheet

Technical drawing

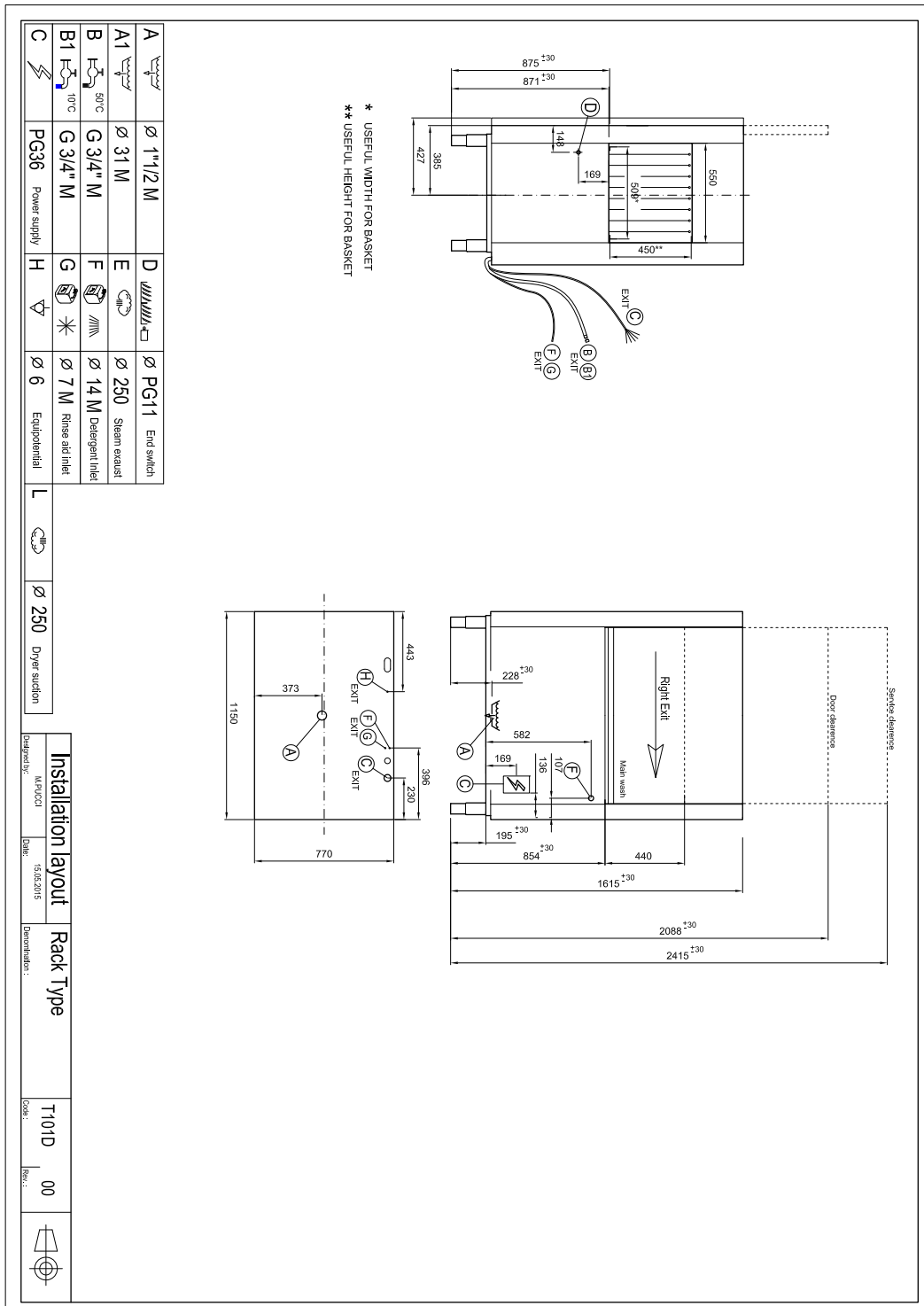


Rack conveyor dishwasher 120 racks/hour hot water, right exit

Model

SAP Code

00014492



Technical data sheet

Product benefits



Rack conveyor dishwasher 120 racks/hour hot water, right exit

Model

SAP Code

00014492

1

Stainless steel outer shell construction

- round construction with stainless steel, rounded edges, Deep-drawn bathtub
- easy cleaning, high hygiene standard, long service life

2

LED Display

- proScreen 4 local display + 2 LED strips
- easy control of the dishwasher operation
 - continuous information on the status of the wash cycle
 - diagnostics in the event of a fault

3

Detergent dispensers

- two detergent and rinse aid dispensers
- precise chemical dosing by ProDose - precise dosing system for detergent and rinse aid by peristaltic pump setting of values via control panel

4

Double filter system

- the chamber filter and the waste filter together with the ArchiMedes system provide a discharge system with increased water purification efficiency
- higher washing efficiency; longer life of the washing bath

5

Energy saving

- Energy Saving energy saving system due to lowering the temperature of the boiler
- cost saving

6

Protection of fragile dishes

- softStart system of gradual start of washing programs to protect fragile dishes
- protects stemmed glasses and other fragile utensils

7

Double shell construction

- stainless steel construction with insulated double jacket
- quiet operation
 - energy saving

8

Fast heating

- Performance management allows the current running of the boiler and basins body
- quick first warm-up of the dishwasher
 - smooth operation

9

Sliding system

- a sliding system that moves the baskets through individual washing zones, the possibility to connect the drive to automatic tables
- quick distribution of dirty dishes

10

Possibility of recovery

- saving up to 40% of boiler energy improves the comfort environment of the workplace environment without steam saves water
- saving on energy and water costs; environmentally friendly system; safe system; pleasant workplace

Technical data sheet

Technical parameters



Rack conveyor dishwasher 120 racks/hour hot water, right exit

Model	SAP Code	00014492
--------------	-----------------	----------

1. SAP Code:

00014492

2. Article group:

Tunel dishwasher line CT

3. Net Width [mm]:

1150

4. Net Depth [mm]:

770

5. Net Height [mm]:

1588

6. Net Weight [kg]:

176.00

7. Gross Width [mm]:

1280

8. Gross depth [mm]:

920

9. Gross Height [mm]:

1800

10. Gross Weight [kg]:

202.00

11. Device type:

Electric unit

12. Control type:

Digital

13. Material:

AISI 304

14. Power electric [kW]:

22.000

15. Loading:

400 V / 3N - 50 Hz

16. Number of programs:

2

17. Opening of device:

Retractable up

18. Door clear height [mm]:

450

19. Inlet pressure:

2-4bar

20. Adjustable feet:

Yes

21. Number of skin:

2

22. Modular construction:

Yes

23. Pre-wash module:

No

24. Maximal rack feed [racks/h]:

120

25. Self-cleaning cycle:

No

26. Boiler capacity [l]:

17.00

27. Boiler power [kW]:

9.500

28. Basin volume [l]:

70

Technical data sheet

Technical parameters



Rack conveyor dishwasher 120 racks/hour hot water, right exit

Model	SAP Code	00014492
-------	----------	----------

29. Tank power [kW]:

10,500

30. Number of washing arms:

3

31. Number of rinsing arms:

2

32. Washing arm type:

Firm

33. Washing arm material:

Stainless steel

34. Atmospheric boiler with rinse pump:

No

35. Rinsing arm type:

Firm

36. Rinsing arm material:

Stainless steel

37. Deep drawn tank:

Yes

38. Rack support:

welded

39. Tank surface strainers:

stainless steel

40. Boiler thermostat adjust:

Yes

41. Rack feed capacity:

60-120

42. Detergent and rinse pump system:

ProDose - accurate dosing with a peristaltic pump

43. Hot water electric valve:

Yes

44. Rack size [mm]:

500 x 500

45. Min supply water temperature [°C]:

45

46. Max supply water temperature [°C]:

60

47. Display type:

ProSmart LED interface

48. USB port:

Yes, for Firmware actualisation

49. Self-diagnostics:

Yes

50. Double rinse:

No

51. Wash pump type:

two-way - DuoFlow

52. Detergent dispenser:

Yes

53. Rinse aid dispenser:

Yes

54. Water consumption of the washing cycle:

1,3 - 2,7

55. Washing cycle time [s]:

30 - 60

56. Rinse water temperature [°C]:

80

Technical data sheet

Technical parameters



Rack conveyor dishwasher 120 racks/hour hot water, right exit

Model	SAP Code	00014492
-------	----------	----------

57. Standard equipment for device:

1x glass basket, 1x plate basket, 1x cutlery basket

58. Additional information:

The product comes with 1x RM Clean+ 12 kg (00012271) and 1x RM Rinse+ 10 kg (00012273) for free

59. Program ProSpeed:

No

60. Program ProFessional:

No

61. Program ProFessional 2:

No

62. Program ProFessional 4:

No

63. Program ProFessional 6:

No

64. Program ProFessional 8:

No

65. Program ProFessional 10:

No

66. Program ProTemp:

No

67. Program ProSelf:

No

68. Program ProClean:

No

69. Program ProDrain:

No

70. Program ProEco:

No

71. Program ProNew:

No

72. Program ProLong:

No

73. Program ProGlass:

No

74. Program ProPlates:

No

75. Program ProCold:

No

76. Program ProWater:

No

77. Program ProActive:

No

78. Program ProActive 5:

No

79. Program ProActive 7:

No

80. Program ProSteel:

No

81. Program ProSan:

No

82. Program High Capacity:

Yes

83. Program General purpose:

No

84. Program Prolonged contact (DIN 10534):

Yes

Technical data sheet

Technical parameters



Rack conveyor dishwasher 120 racks/hour hot water, right exit

Model

SAP Code

00014492

85. Program Glasses:

No