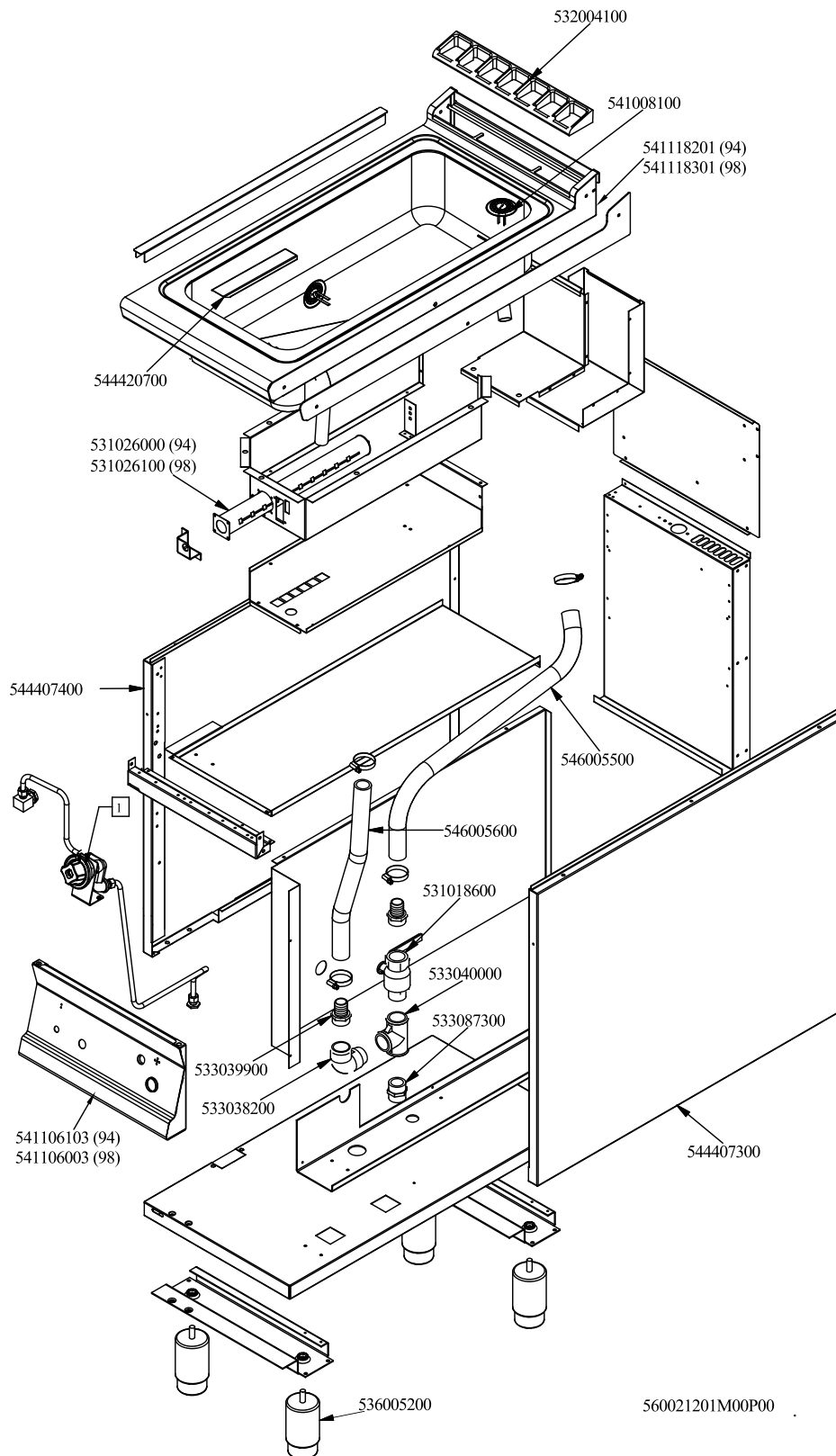
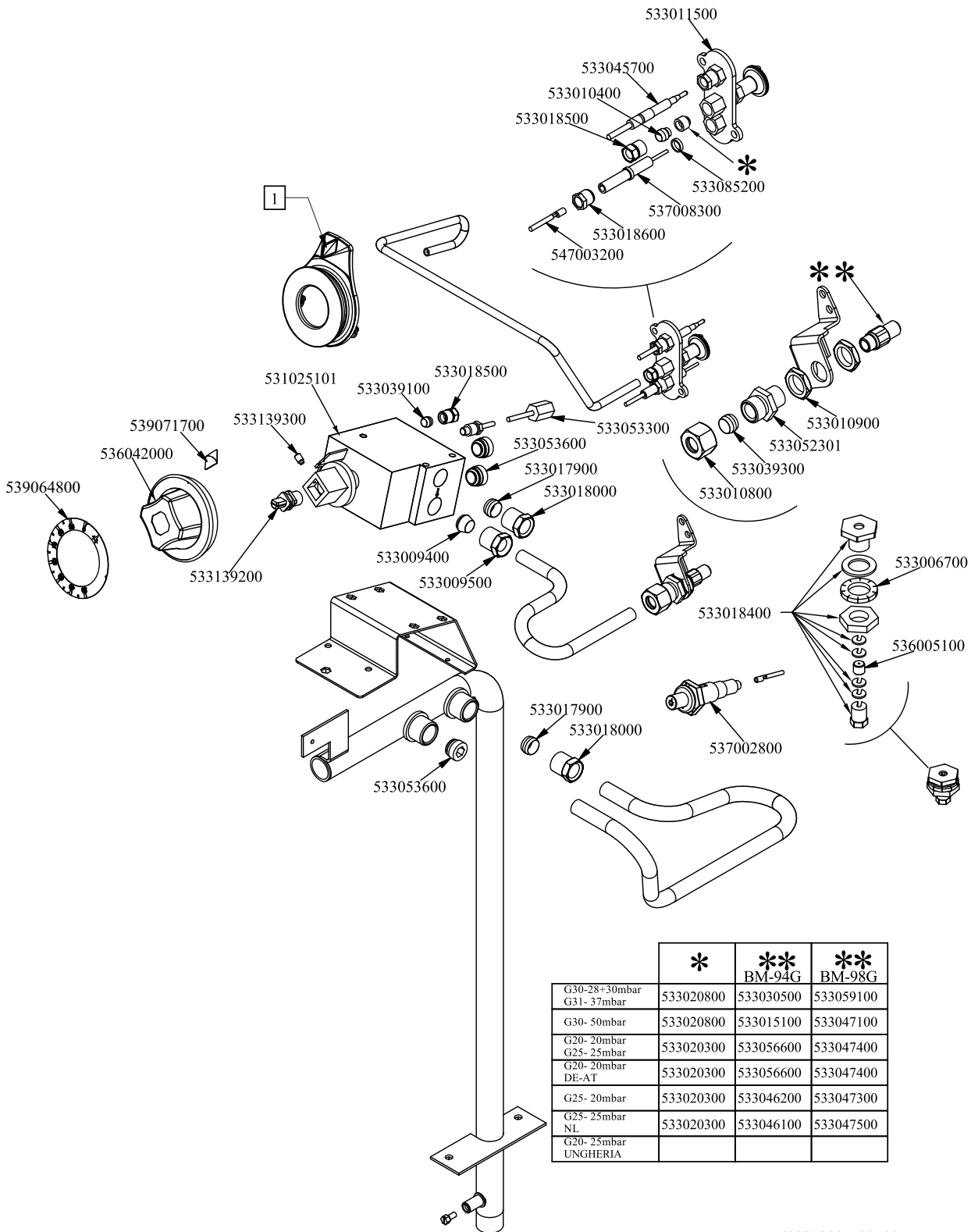


RM 900
 Platný od 1.5. 2019
 BM-94G, BM-98G





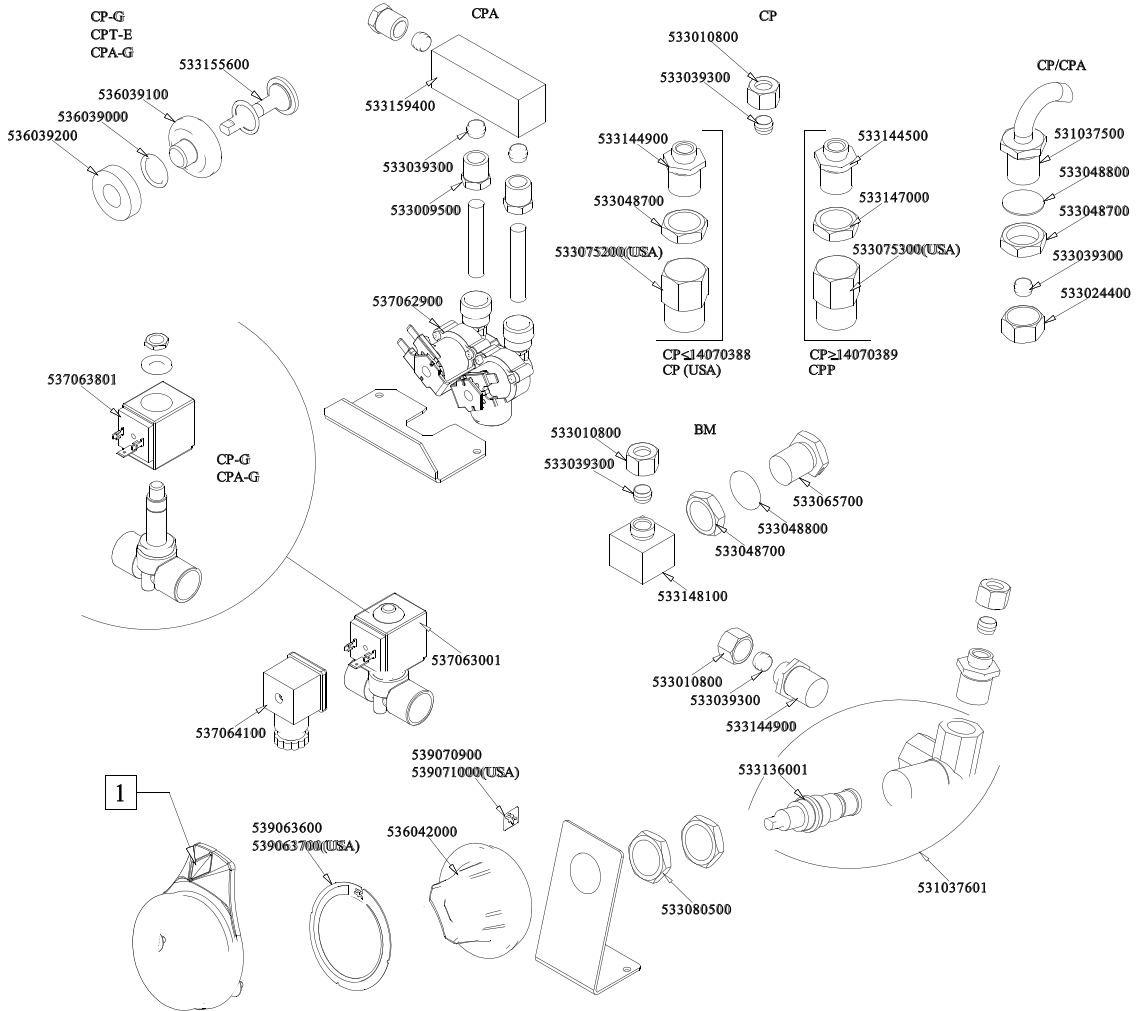
Objednačí kód	Popis v ENG
536005200	INOX LEG 2" 120-180 M10
533087300	HEXAGONAL BICONE 1G
533040000	1"G F-F-F "T" FITTING
531018600	BALL VALVE 1"G M-F CPM-62G
546005500	RUBBER TUBE §25INT.*§33EXT.XL=660
546005600	RUBBER TUBE §25INT.*§33EXT.XL=420
541106103	
541118201	
533039900	PIPE HOLDER 1" G M D.24
533038200	1" G M-F ELBOW FITTING
531026000	BURNER FT-4/6/8G BM-4G
541008100	DRAIN FILTER TANK CP 700LINE
544420700	
532004100	FLUE GRID L=370 90LINE (RAF)
544407400	LEFT SIDE PANEL 70 LINE
544407300	RIGHT SIDE PANEL 90 LINE
-	-



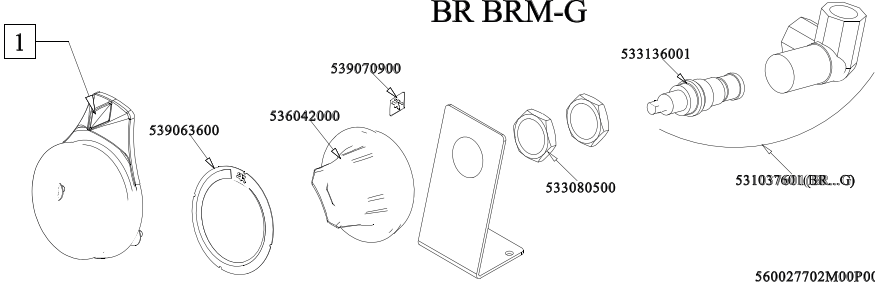
	*	**	**
		BM-94G	BM-98G
G30-28+30mbar	533020800	533030500	533059100
G31-37mbar			
G30-50mbar	533020800	533015100	533047100
G20-20mbar	533020300	533056600	533047400
G25-25mbar	533020300	533056600	533047400
G20-20mbar DE-AT	533020300	533056600	533047400
G25-20mbar	533020300	533046200	533047300
G25-25mbar NL	533020300	533046100	533047500
G20-25mbar UNGHERIA			



Objednačí kód	Popis v ENG
533059100	NOZZLE §125A CH12*30 G-BM8
533047100	NOZZLE §100A CH12*30 GF-BM6/8
533047400	NOZZLE §195 CH12*30 M-BM8
533047300	NOZZLE §215 CH12*30 L-BM8
533047500	NOZZLE §205 CH12*30 ML-BM-8G
533030500	NOZZLE §90 CH12X14 G30/CE
533015100	NOZZLE §80 CH12*14 F-FP/CP6
533056600	NOZZLE §135 CH12*30 M-BM4
533046200	NOZZLE §150 CH12X30 L-BR TP
533046100	NOZZLE §140 CH12X30 MH-BR
533020800	NOZZLE 0160-FLUSS. (25)
533020300	NOZZLE 0160 (NATURAL GAS) 1-2 (41)
533011500	PILOT BURNER 2 FLAMES 220
533018400	THREADED FITTING
536005100	GRAPHITE §07,4 GASKET
533006700	NOTCHED WASHER D.14
531025101	EUROSIT VALVE BM 30-100°C
533045700	THERMOCOUPLE M9*1 500
533018500	FITTING FOR BICONE D.6 M10*1
533010400	BICONE D.6
533085200	SPACER FOR PILOT PLUG
537008300	ROUND PLUG §2,4- LONG ELECTRODE
533018600	PLUG FITTING
547003200	HIGH-VOLTAGE CABLE TUBE.§2 L=500
533053300	THERMOCOUPLE EXTENSION M9*1
533039100	BICONE §6
533053600	EUROSIT VALVE PLUG
533017900	BICONE D.12
533018000	ELBOW FOR BICONE D.12 3/8 RS L20
533009500	NIPPLE FOR BICONE 10S
533009400	BICONE 10S
533010900	NUT M14*1 H.4
533052301	JOINT FOR NOZZLE HOLDER
533039300	BICONE §10
533010800	TUBE NUT D.10 M16*1,5
537002800	PIEZOELECTRIC IGNITION M18 WITH NUT
539064800	BLACK STICKING DISK 72 (030,090°)
539071700	ADHES.LABEL FOR RING GREEN SIGN.
533139200	SHORT PIVOT FOR BRASS KNOB
536042000	SILVER CHROM. KNOB Ø77 4P.G.Ø8SX6,5
533139300	BURNISH HEADLESS SCREW M05*05 PCEI
-	-



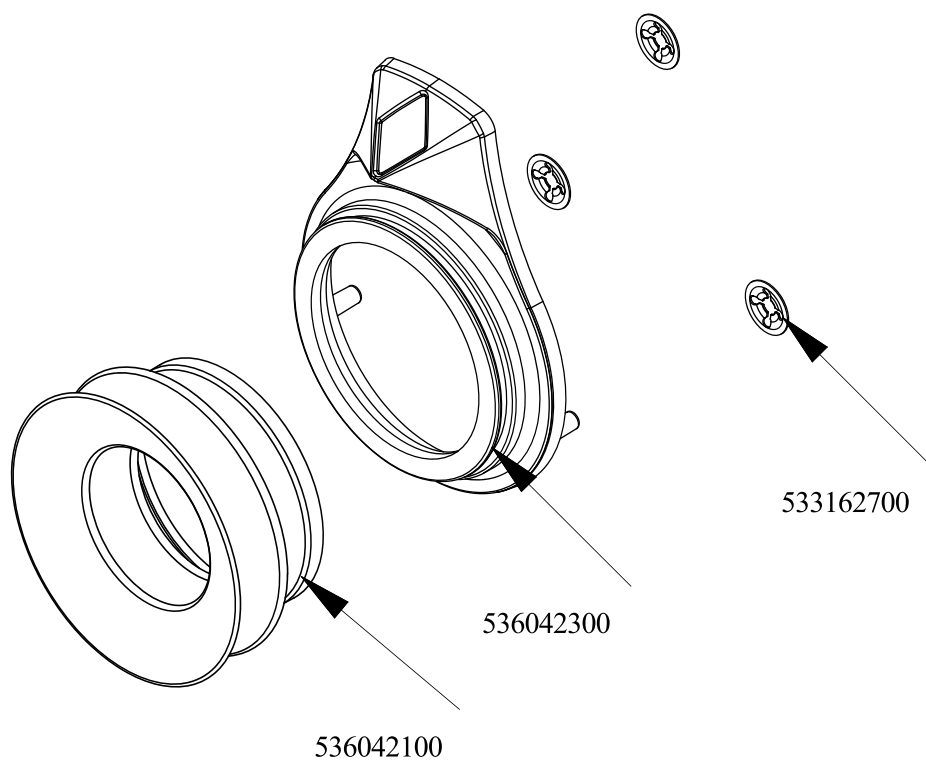
BR BRM-G



560027702M00P00



Objednací kód	Popis v ENG
536042000	SILVER CHROM. KNOB Ø77 4P.G.Ø8SX6,5
533136001	SCREW TAP WATER LOAD FOR CP S70/90
531037601	TAP FOR WATER 90°DX CP
539063600	ADHESIVE DISK 72 FOR DRAIN COCK
539070900	ADHES.LABEL FOR RING WATER TAP
531037601	TAP FOR WATER 90°DX CP
533010800	TUBE NUT D.10 M16*1,5
533039300	BICONE §10
533144900	MALE FITTING WATER INLET M16X1,5
539071000	PROCESSING CODE
539063700	ADHESIVE DISK 72 FOR DRAIN COCK USA
533048700	NUT 1/2G ZN
533075200	PROCESSING CODE
533147000	BICONE FITTING 3/4G ZN
533144500	FITTING FOR WATER INPUT 3/4G
533075300	PROCESSING CODE
533080500	PROCESSING CODE
533148100	
533048800	GASKET §30*§21*2 FIBRE
533065700	FITTING FOR WATER INPUT 1/2G
531037500	PROCESSING CODE
533024400	HEXAGONAL NUT 1/2G TUBE D.10
537062900	ELECTRO-VALVE 3/4GM-2Ø10JG 230V RPV
533009500	NIPPLE FOR BICONE 10S
533159400	
536039000	GASKET O-RING 12,42X1,78 SILIC.
536039100	GUIDE FOR WATER SENSOR
533155600	PIVOT SENSOR FOR WATER
536039200	SPACER FOR WATER SENSOR
537064100	CONNECTION * ELECTROVALVE 537063001
537063801	
537063001	ELECTROVALVE G 1/2 230V
-	-



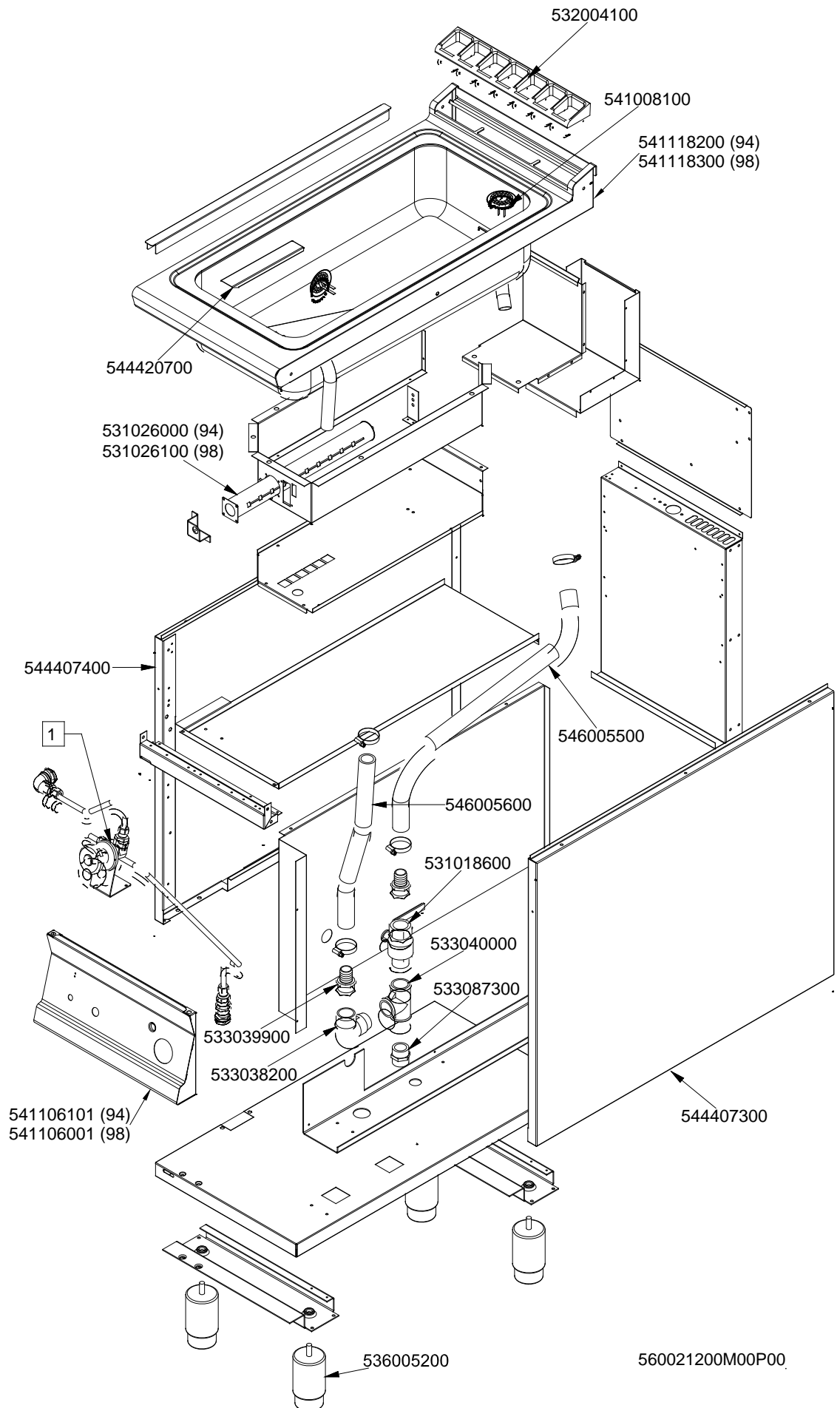
560125700M00P00



Objednačí kód	Popis v ENG
536042300	SILVER CHROM. RING FOR KNOB Ø77 4 P
536042100	SEAL CASING FOR KNOB Ø77 4 P
533162700	PROCESSING CODE

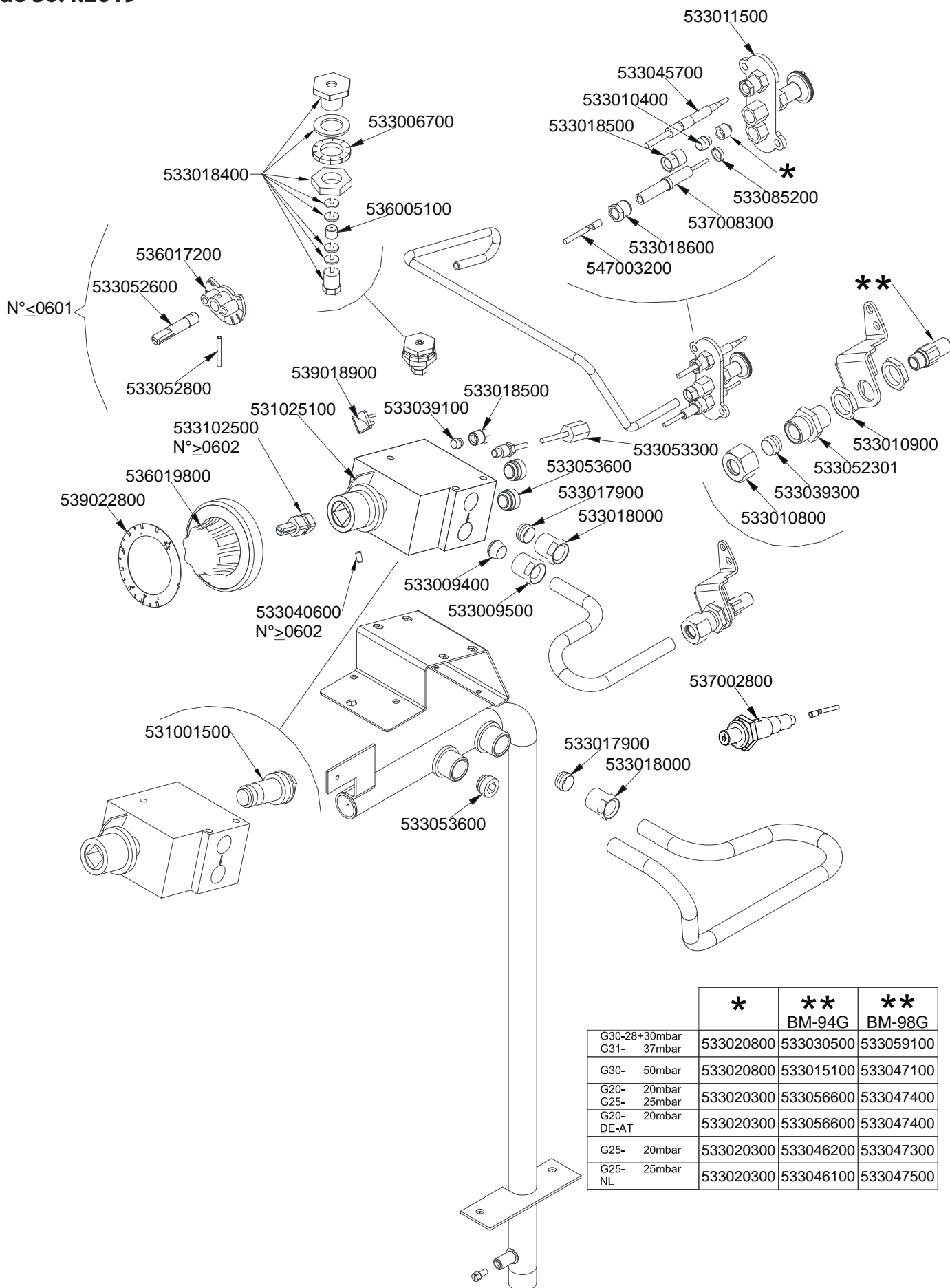


BM - 94 G, BM - 98 G
 Platný od 1.5.2016
 do 30.4.2019





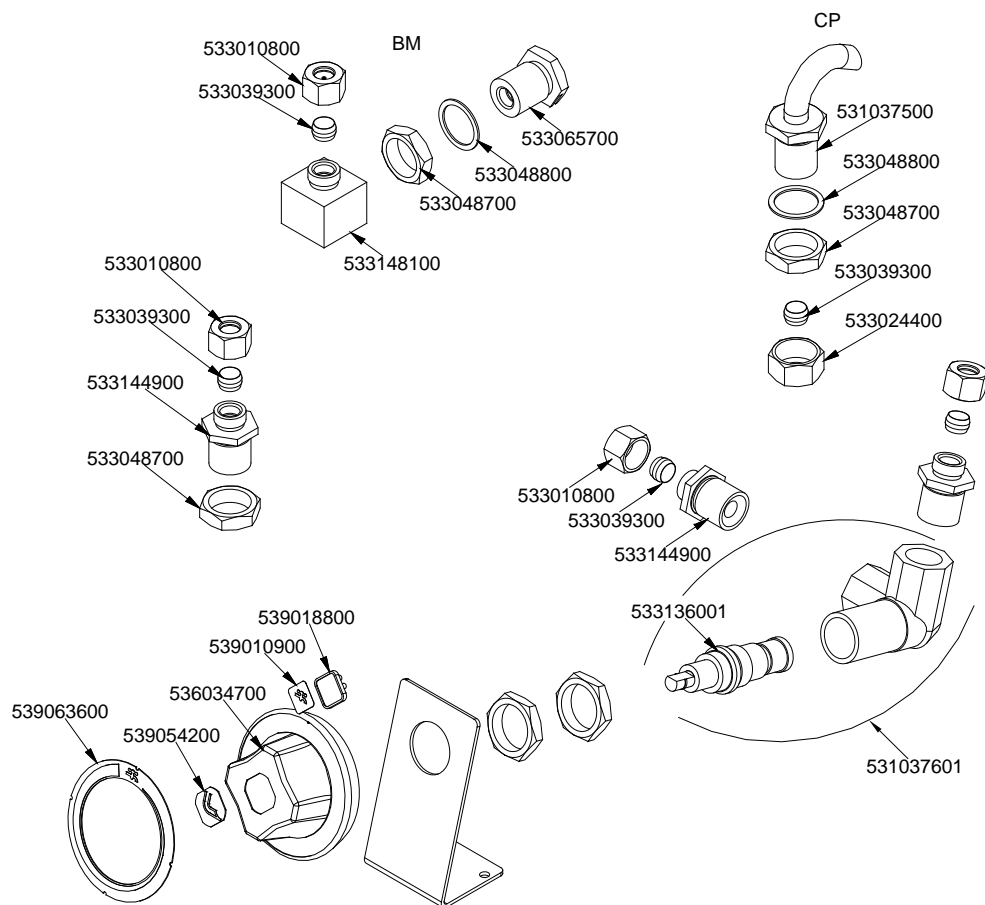
BM - 94 G, BM - 98 G
Platný od 1.5.2016
do 30.4.2019



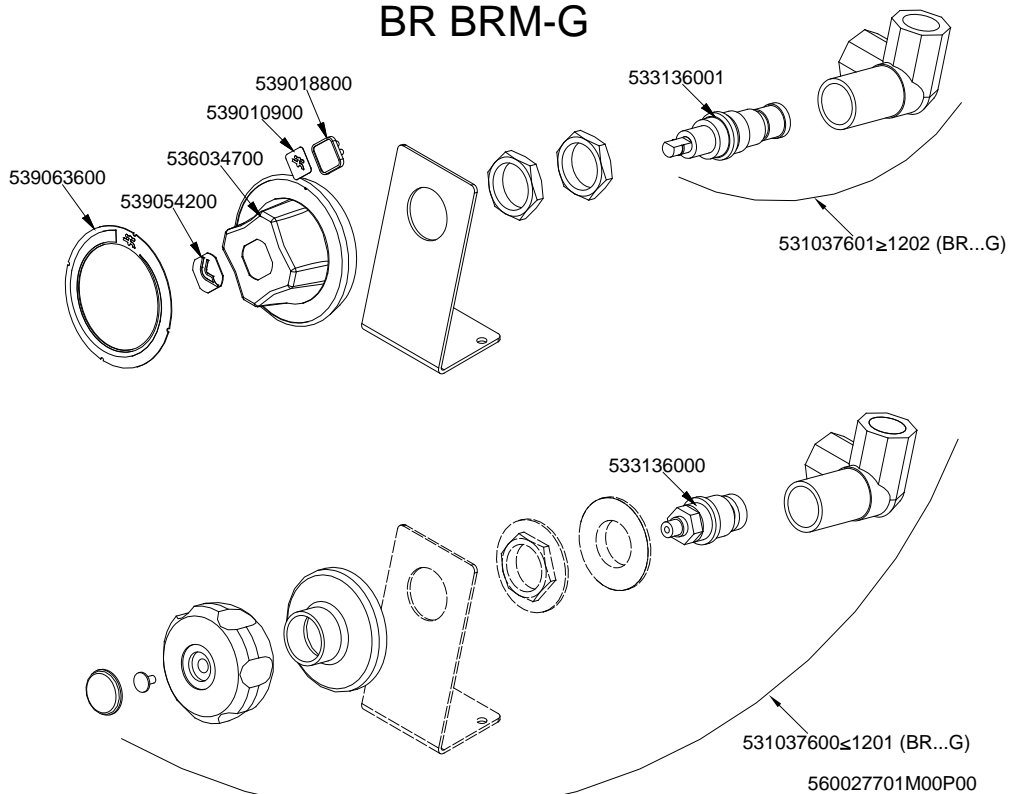
	*	**	**
		BM-94G	BM-98G
G30-28+30mbar G31- 37mbar	533020800	533030500	533059100
G30- 50mbar	533020800	533015100	533047100
G20- 20mbar G25- 25mbar	533020300	533056600	533047400
G20- 20mbar DE-AT	533020300	533056600	533047400
G25- 20mbar	533020300	533046200	533047300
G25- 25mbar NL	533020300	533046100	533047500



BM - 94 EM, BM - 98 EM
Platný od 1.5.2016
do 30.4.2019



BR BRM-G





BM - 94 G, BM - 98 G
Platný od 1.5.2016
do 30.4.2019

