

# Technical data sheet

## Product features



### Fry-top griddle plate smooth chromed

<b>Model</b>	<b>SAP Code</b>	00013632
--------------	-----------------	----------



- Top type: Smooth
- Griddle dimensions [mm x mm]: 360 x 680
- Griddle thickness [mm]: 14.00
- Worktop material: Super chrom
- Container for liquid fat: Yes
- Maximum device temperature [°C]: 300

<b>SAP Code</b>	00013632	<b>Power electric [kW]</b>	7.500
<b>Net Width [mm]</b>	400	<b>Loading</b>	400 V / 3N - 50 Hz
<b>Net Depth [mm]</b>	900	<b>Griddle dimensions [mm x mm]</b>	360 x 680
<b>Net Height [mm]</b>	280	<b>Top type</b>	Smooth
<b>Net Weight [kg]</b>	59.00	<b>Worktop type</b>	Molded - comfortable cleaning maintenance

# Technical data sheet

Technical drawing

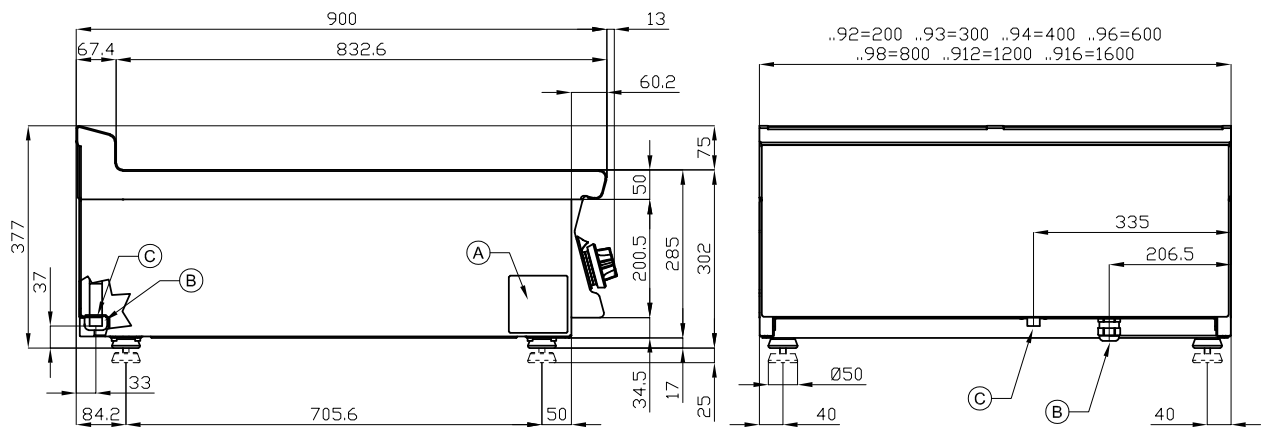


## Fry-top griddle plate smooth chromed

Model

SAP Code

00013632



A	Data plate		B	Electrical connection	
---	------------	--	---	-----------------------	--

# Technical data sheet

Technical parameters



## Fry-top griddle plate smooth chromed

<b>Model</b>	<b>SAP Code</b>	00013632
--------------	-----------------	----------

**1. SAP Code:**

00013632

**2. Net Width [mm]:**

400

**3. Net Depth [mm]:**

900

**4. Net Height [mm]:**

280

**5. Net Weight [kg]:**

59.00

**6. Gross Width [mm]:**

430

**7. Gross depth [mm]:**

970

**8. Gross Height [mm]:**

540

**9. Gross Weight [kg]:**

69.00

**10. Device type:**

Electric unit

**11. Construction type of device:**

Table top

**12. Power electric [kW]:**

7.500

**13. Loading:**

400 V / 3N - 50 Hz

**14. Protection of controls:**

IPX5

**15. Device color:**

Stainless steel

**16. Material:**

AISI 304

**17. Indicators:**

operation and warm-up

**18. Worktop type:**

Molded - comfortable cleaning maintenance

**19. Worktop material:**

Super chrom

**20. Maximum device temperature [°C]:**

300

**21. Minimum device temperature [°C]:**

50

**22. Safety thermostat:**

Yes

**23. Adjustable feet:**

Yes

**24. Griddle dimensions [mm x mm]:**

360 x 680

**25. Griddle thickness [mm]:**

14.00

**26. Container for liquid fat:**

Yes

**27. Uniform heating:**

Yes

**28. Top type:**

Smooth