

Technical data sheet

Product features



Pasta cooker gas 40 l with cabinet

Model	SAP Code	00000357
--------------	-----------------	----------



- Basin volume [l]: 40
- Water inlet: mechanical tap
- Drain type: Through the substructure with connection to waste
- Drain: Yes
- Safety drain: Yes
- Material: AISI 304 top plate and cladding
- Protection of controls: IPX5
- Ignition: Piezo + veÄŤnÄĚ plamen

SAP Code	00000357	Power gas [kW]	13.950
Net Width [mm]	600	Type of gas	Natural gas, propane butane
Net Depth [mm]	600	Basin volume [l]	40
Net Height [mm]	900	Width of internal part [mm]	510
Net Weight [kg]	74.00	Depth of internal part [mm]	307
Power electric [kW]	0.020	Height of internal part [mm]	327
Loading	230 V / 1N - 50 Hz		

Technical data sheet

Technical drawing

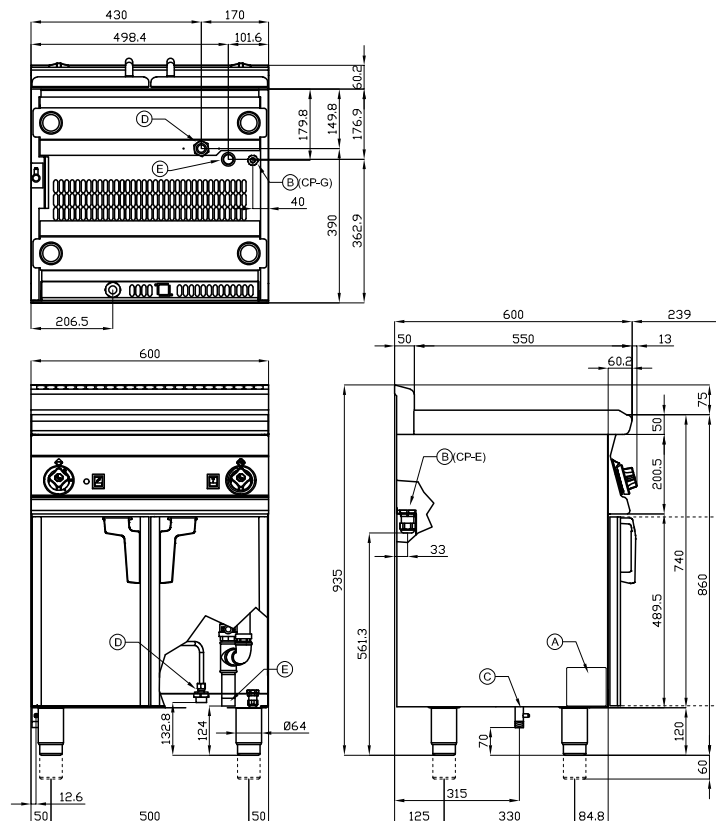


Pasta cooker gas 40 l with cabinet

Model

SAP Code

00000357



A	Data plate		B	Electrical connection	
C	Gas connection	ISO 7-1 1/2" M	D	Cold water connection	ISO 7-1 3/4" M
E	Water drainage	ISO 7-1 1" M			

Technical data sheet

Product benefits



Pasta cooker gas 40 l with cabinet

Model

SAP Code

00000357

1

All-stainless steel bathtub

long life
resistance of AISI 304 stainless steel material
the material does not cut

- savings on service interventions
- easier and faster operation

2

Degree of protection of the control elements IPX5

maintenance-free system
resistance to splash water
long life

- savings on service interventions
- easy cleaning and maintenance of equipment

3

Outlet to a removable collector in the substructure

outlet of the bath into the prepared container

- easy and safe handling

4

Micro switch

microswitch preventing the device from running when there is no water in the bath

- prevents destruction of the equipment by overheating

5

Safety element "thermocouple"

microswitch preventing the device from running when there is no water in the bath

- savings on service interventions
- easier and faster operation

Technical data sheet

Technical parameters



Pasta cooker gas 40 l with cabinet

Model

SAP Code

00000357

1. SAP Code:

00000357

2. Net Width [mm]:

600

3. Net Depth [mm]:

600

4. Net Height [mm]:

900

5. Net Weight [kg]:

74.00

6. Gross Width [mm]:

630

7. Gross depth [mm]:

670

8. Gross Height [mm]:

1110

9. Gross Weight [kg]:

84.00

10. Device type:

Gas unit

11. Construction type of device:

With substructure

12. Power electric [kW]:

0.020

13. Loading:

230 V / 1N - 50 Hz

14. Power gas [kW]:

13.950

15. Ignition:

Piezo + veÄŤnÄŤ plamen

16. Type of gas:

Natural gas, propane butane

17. Protection of controls:

IPX5

18. Device color:

Stainless steel

19. Material:

AISI 304 top plate and cladding

20. Worktop Thickness [mm]:

1.00

21. Basin volume [l]:

40

22. Basin dimensions [mm x mm x mm]:

510 x 307 x 327

23. Device capacity [l]:

40.00

24. Number of power control stages:

4

25. Service accessibility:

Trough the frontal panel

26. Safety thermocouple:

Yes

27. Adjustable feet:

Yes

28. Additional information:

baskets are not included - can be purchased

Technical data sheet

Technical parameters



Pasta cooker gas 40 l with cabinet

Model

SAP Code

00000357

29. Basin material:

AISI 316 - Stainless steel highly resistant to salt water

30. Water inlet:

mechanical tap

31. Drain type:

Through the substructure with connection to waste

32. Drain:

Yes

33. Safety drain:

Yes

34. Heating location:

Inside the tank

35. Width of internal part [mm]:

510

36. Depth of internal part [mm]:

307

37. Height of internal part [mm]:

327

38. Image for addition:

C43BF4C8-136D-4C73-BA8A-690C85C5B568