

# Technical data sheet

## Product features



### Cooking range induction electric 4x plate on open cabinet 400 V

Model	SAP Code	00005521
-------	----------	----------



- Device type: Electric unit
- Power consumption of the zone 1 [kW]: 5
- Power consumption of the zone 2 [kW]: 5
- Power consumption of the zone 3 [kW]: 5
- Power consumption of the zone 4 [kW]: 5
- Type of internal part of the appliance 1 (eg oven): Electric
- Protection of controls: IPX5
- Material: AISI 304

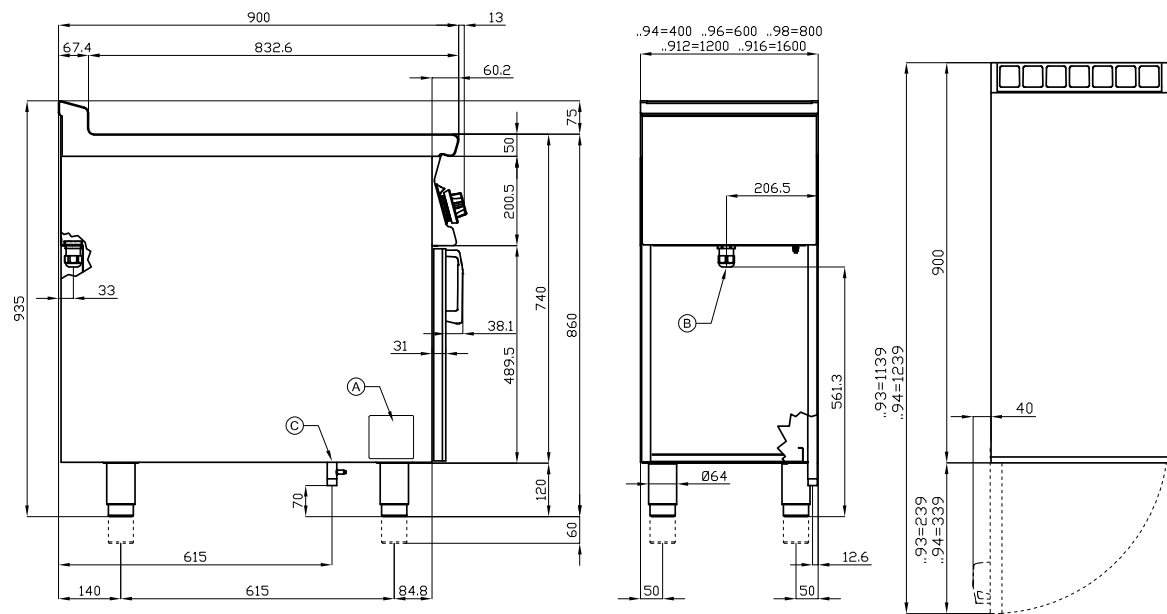
<b>SAP Code</b>	00005521	<b>Number of zones</b>	4
<b>Net Width [mm]</b>	800	<b>Power consumption of the zone 1 [kW]</b>	5
<b>Net Depth [mm]</b>	900	<b>Power consumption of the zone 2 [kW]</b>	5
<b>Net Height [mm]</b>	900	<b>Power consumption of the zone 3 [kW]</b>	5
<b>Net Weight [kg]</b>	78.00	<b>Power consumption of the zone 4 [kW]</b>	5
<b>Power electric [kW]</b>	20.000	<b>Type of internal part of the appliance 1 (eg oven)</b>	Electric
<b>Loading</b>	400 V / 3N - 50 Hz		

# Technical drawing



**Cooking range induction electric 4x plate on open cabinet 400 V**

Model	SAP Code	00005521
-------	----------	----------



A	Data plate		B	Electrical connection	
---	------------	--	---	-----------------------	--

# Technical data sheet

## Product benefits



### Cooking range induction electric 4x plate on open cabinet 400 V

Model

SAP Code

00005521

1

#### Massive thal

20mm material ensures even distribution of heat and heating of the product (heating several pots at the same time at the same temperature)

material resistance

long life

- saving time
- ease of use
- savings on service interventions

2

#### Hygienic moldings of the top plate

absence of sharp corners and edges (potential places where dirt could stick)

smooth transitions

- easy quick cleaning

3

#### Degree of protection of the control elements IPX5

maintenance-free system

resistance to splash water

long life

- savings on service interventions
- easy cleaning and maintenance of equipment

4

#### All-stainless design

the material does not cut

wear resistance of the material

long life

- savings on service interventions
- easy cleaning and maintenance of equipment

5

#### Large electric oven with four positions for racks with static cooking

static baking

high capacity and variability

all-stainless design

- suitable for yeast dishes and desserts
- long service life
- easy to clean

# Technical data sheet

## Technical parameters



### Cooking range induction electric 4x plate on open cabinet 400 V

**Model**

**SAP Code**

00005521

**1. SAP Code:**

00005521

**2. Article group:**

Stoves

**3. Net Width [mm]:**

800

**4. Net Depth [mm]:**

900

**5. Net Height [mm]:**

900

**6. Net Weight [kg]:**

78.00

**7. Gross Width [mm]:**

830

**8. Gross depth [mm]:**

970

**9. Gross Height [mm]:**

1110

**10. Gross Weight [kg]:**

94.00

**11. Device type:**

Electric unit

**12. Construction type of device:**

With substructure

**13. Power electric [kW]:**

20.000

**14. Loading:**

400 V / 3N - 50 Hz

**15. Protection of controls:**

IPX5

**16. Device color:**

Stainless steel

**17. Material:**

AISI 304

**18. Worktop type:**

Molded - comfortable cleaning maintenance

**19. Worktop material:**

Glass ceramics

**20. Worktop Thickness [mm]:**

2.00

**21. Number of zones:**

4

**22. Power consumption of the zone 1 [kW]:**

5

**23. Power consumption of the zone 2 [kW]:**

5

**24. Power consumption of the zone 3 [kW]:**

5

**25. Power consumption of the zone 4 [kW]:**

5

**26. Number of power control stages:**

6

**27. Service accessibility:**

From the front by removing the front panel and waste fluid containers

**28. Safety thermostat:**

Yes

# Technical data sheet

Technical parameters



Cooking range induction electric 4x plate on open cabinet 400 V

Model

SAP Code

00005521

## 29. Adjustable feet:

Yes

## 31. Type of electric cooking zones:

Induction

## 30. Number of burners/hot plates:

4

## 32. Type of internal part of the appliance 1 (eg oven):

Electric