

# Technical data sheet



## Product features

<b>Model</b>	<b>SAP Code</b>	00110120
SPT 70/80 11 E	<b>A group of articles - web</b>	Stoves



- Device type: Electric unit
- Power consumption of the zone 1 [kW]: 2,6
- Power consumption of the zone 2 [kW]: 2,6
- Power consumption of the zone 3 [kW]: 2,6
- Power consumption of the zone 4 [kW]: 2,6
- Type of internal part of the appliance 1 (eg oven): Electric
- Type of internal part of the appliance 2 (eg oven): Hot air
- Material: AISI 304 top plate, AISI 430 cladding

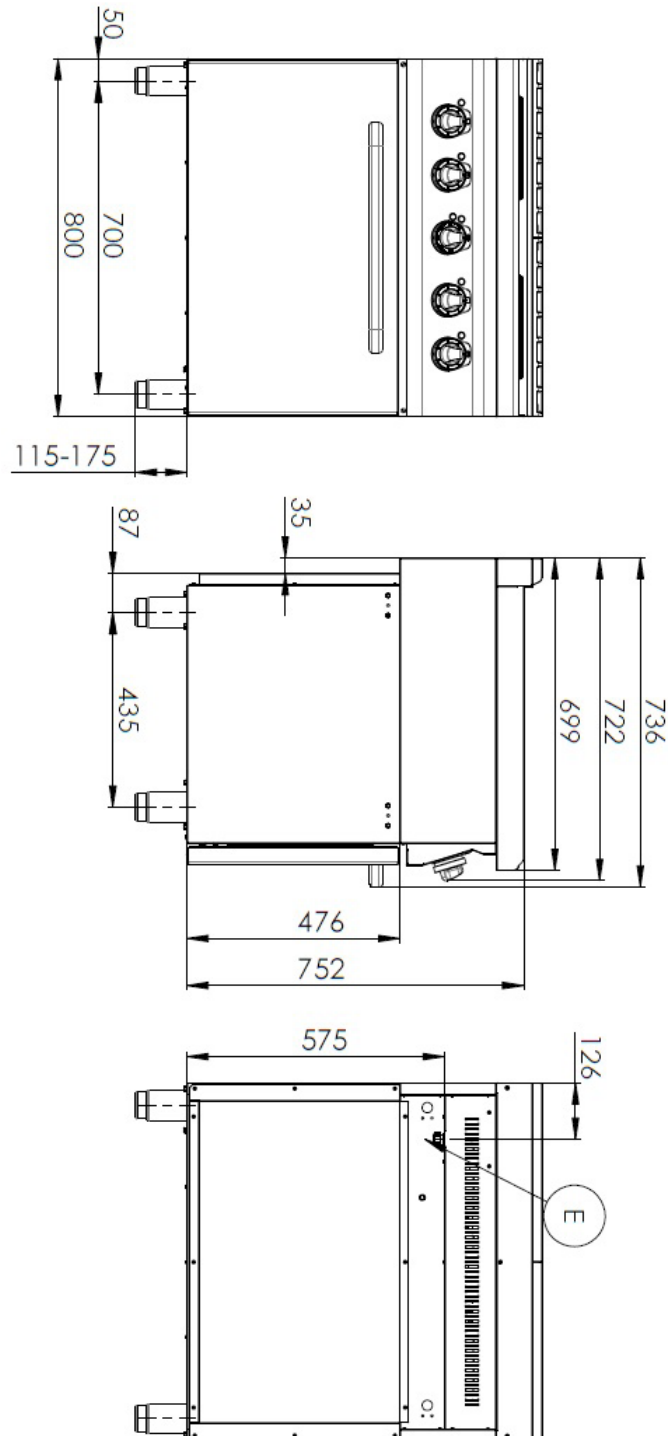
<b>SAP Code</b>	00110120	<b>Power consumption of the zone 2 [kW]</b>	2,6
<b>Net Width [mm]</b>	800	<b>Power consumption of the zone 3 [kW]</b>	2,6
<b>Net Depth [mm]</b>	700	<b>Power consumption of the zone 4 [kW]</b>	2,6
<b>Net Height [mm]</b>	900	<b>Type of internal part of the appliance 1 (eg oven)</b>	Electric
<b>Net Weight [kg]</b>	80.00	<b>Type of internal part of the appliance 2 (eg oven)</b>	Hot air
<b>Power electric [kW]</b>	13.400	<b>Width of internal part [mm]</b>	548
<b>Loading</b>	400 V / 3N - 50 Hz	<b>Depth of internal part [mm]</b>	360
<b>Number of zones</b>	4	<b>Height of internal part [mm]</b>	338
<b>Power consumption of the zone 1 [kW]</b>	2,6	<b>Diameter of device [mm]</b>	220

# Technical data sheet



Technical drawing

<b>Model</b>	<b>SAP Code</b>	00110120
SPT 70/80 11 E	<b>A group of articles - web</b>	Stoves



# Technical data sheet



## Product benefits

<b>Model</b>	<b>SAP Code</b>	00110120
SPT 70/80 11 E	<b>A group of articles - web</b>	Stoves

- 1 Round plates**  
quick warm-up  
efficient cooking on a round surface with easy  
adhesion to dishes
  - time-saving in food preparation
  - easy to use thanks to the large surface area of the  
cooking plates
- 2 Internal thermostatic plate protection**  
longer service life of the plates
  - no overheating of the plates and no cracking
- 3 Degree of protection of the control  
elements IPX4**  
maintenance-free system  
resistance to splash water  
long life
  - savings on service interventions
  - easy cleaning and maintenance of equipment
- 4 All-stainless design**  
long life  
resistance of a ground steel plate with  
a thickness of 10 mm
  - savings on service interventions
  - higher corrosion resistance
- 5 Hygienic moldings of the top plate**  
absence of sharp corners and edges (potential places  
where dirt could stick)  
smooth transitions
  - easy quick cleaning
- 6 Hot air oven**  
hot air baking  
high capacity and variability  
all-stainless design
  - suitable for meat, fish, baked pasta, white meat,  
sweet pastries
  - long service life
  - easy to clean

# Technical data sheet



## Technical parameters

<b>Model</b>	<b>SAP Code</b>	00110120
SPT 70/80 11 E	<b>A group of articles - web</b>	Stoves

**1. SAP Code:**

00110120

**2. Article group:**

RF-Line 700

**3. Net Width [mm]:**

800

**4. Net Depth [mm]:**

700

**5. Net Height [mm]:**

900

**6. Net Weight [kg]:**

80.00

**7. Gross Width [mm]:**

840

**8. Gross depth [mm]:**

800

**9. Gross Height [mm]:**

975

**10. Gross Weight [kg]:**

93.00

**11. Device type:**

Electric unit

**12. Construction type of device:**

With substructure

**13. Power electric [kW]:**

13.400

**14. Loading:**

400 V / 3N - 50 Hz

**15. Material:**

AISI 304 top plate, AISI 430 cladding

**16. Worktop material:**

AISI 304

**17. Worktop Thickness [mm]:**

1.20

**18. Number of zones:**

4

**19. Power consumption of the zone 1 [kW]:**

2,6

**20. Power consumption of the zone 2 [kW]:**

2,6

**21. Power consumption of the zone 3 [kW]:**

2,6

**22. Power consumption of the zone 4 [kW]:**

2,6

**23. Number of power control stages:**

6

**24. Safety thermostat up to x ° C:**

360

**25. Adjustable feet:**

Yes

**26. Number of burners/hot plates:**

4

**27. Diameter of device [mm]:**

220

**28. Type of electric cooking zones:**

Oval

**29. Oven size:**

GN 1/1

**30. Type of internal part of the appliance 1 (eg oven):**

Electric

**31. Type of internal part of the appliance 2 (eg oven):**

Hot air

**32. Width of internal part [mm]:**

548

# Technical data sheet



Technical parameters

<b>Model</b>	<b>SAP Code</b>	00110120
SPT 70/80 11 E	<b>A group of articles - web</b>	Stoves

**33. Depth of internal part [mm]:**

360

**36. Minimum temperature of the inner chamber [°C]:**

50

**34. Height of internal part [mm]:**

338

**37. Number of internal parts:**

4

**35. Maximum temperature of the inner chamber [°C]:**

300