

# Technical data sheet

## Product features



### Cooking range glass ceramic electric 2x plate without cabinet 400 V

<b>Model</b>	<b>SAP Code</b>	00002965
--------------	-----------------	----------



- Device type: Electric unit
- Power consumption of the zone 1 [kW]: 1,8
- Power consumption of the zone 2 [kW]: 1,2
- Protection of controls: IPX5
- Material: AISI 304 top plate and cladding

<b>SAP Code</b>	00002965	<b>Power electric [kW]</b>	3.000
<b>Net Width [mm]</b>	300	<b>Loading</b>	400 V / 3N - 50 Hz
<b>Net Depth [mm]</b>	600	<b>Number of zones</b>	2
<b>Net Height [mm]</b>	280	<b>Power consumption of the zone 1 [kW]</b>	1,8
<b>Net Weight [kg]</b>	16.00	<b>Power consumption of the zone 2 [kW]</b>	1,2

# Technical data sheet

Technical drawing

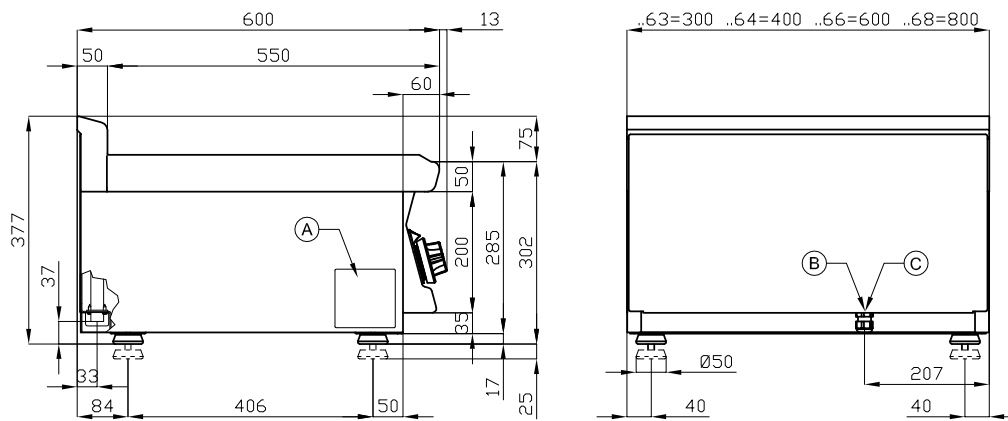


Cooking range glass ceramic electric 2x plate without cabinet 400 V

Model

SAP Code

00002965



A	Data plate		B	Electrical connection	
---	------------	--	---	-----------------------	--

# Technical data sheet

## Product benefits



### Cooking range glass ceramic electric 2x plate without cabinet 400 V

Model

SAP Code

00002965

1

#### Glass ceramic surface

quick warm-up  
uniform heating

- saving time in food preparation
- no reheating and long cooking times
- material does not rust

2

#### Internal thermostatic plate protection

longer service life of the plates

- no overheating of the plates and no cracking

3

#### Degree of protection of the control elements IPX5

maintenance-free system  
resistance to splash water  
long life

- savings on service interventions
- easy cleaning and maintenance of equipment

4

#### All-stainless design

the material does not cut  
wear resistance of the material  
long life

- savings on service interventions
- easy cleaning and maintenance of equipment

5

#### Hygienic moldings of the top plate

absence of sharp corners and edges (potential places where dirt could stick)  
smooth transitions

- easy quick cleaning

6

#### Cooking unit for use on a table or on a base

variable use  
the possibility of placement in smaller spaces

- easy handling
- cost savings on substructure

# Technical data sheet

Technical parameters



## Cooking range glass ceramic electric 2x plate without cabinet 400 V

**Model**

**SAP Code**

00002965

**1. SAP Code:**

00002965

**2. Net Width [mm]:**

300

**3. Net Depth [mm]:**

600

**4. Net Height [mm]:**

280

**5. Net Weight [kg]:**

16.00

**6. Gross Width [mm]:**

330

**7. Gross depth [mm]:**

690

**8. Gross Height [mm]:**

610

**9. Gross Weight [kg]:**

19.00

**10. Device type:**

Electric unit

**11. Construction type of device:**

Table top

**12. Power electric [kW]:**

3.000

**13. Loading:**

400 V / 3N - 50 Hz

**14. Protection of controls:**

IPX5

**15. Device color:**

Stainless steel

**16. Material:**

AISI 304 top plate and cladding

**17. Indicators:**

operation

**18. Worktop material:**

Glass ceramics

**19. Worktop Thickness [mm]:**

1.00

**20. Number of zones:**

2

**21. Power consumption of the zone 1 [kW]:**

1,8

**22. Power consumption of the zone 2 [kW]:**

1,2

**23. Number of power control stages:**

6

**24. Service accessibility:**

Trough the frontal panel

**25. Safety thermostat:**

Yes

**26. Adjustable feet:**

Yes

**27. Number of burners/hot plates:**

2

**28. Type of electric cooking zones:**

Glass ceramic