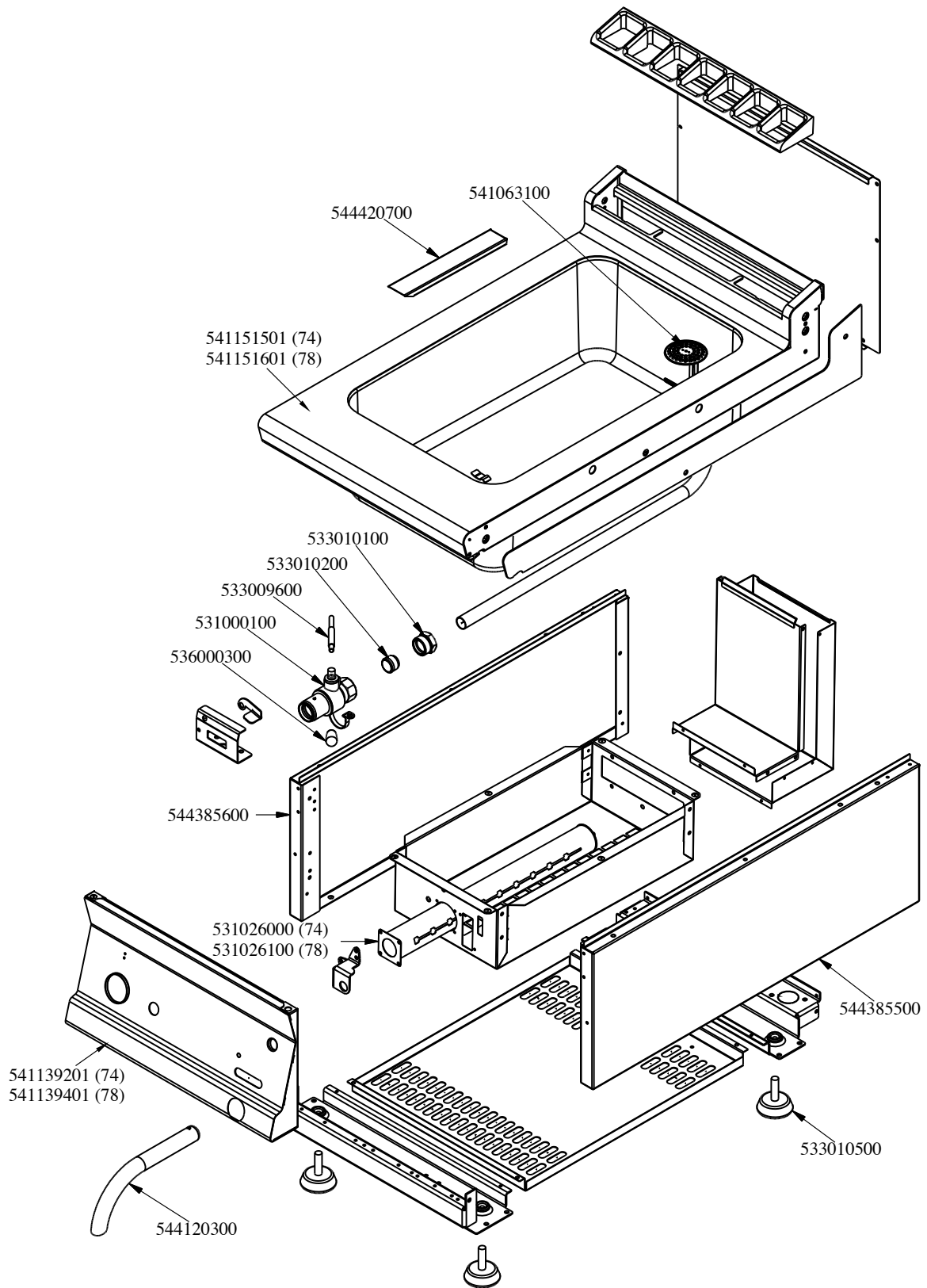


BMT-74G

2021_11

1





BMT-74G

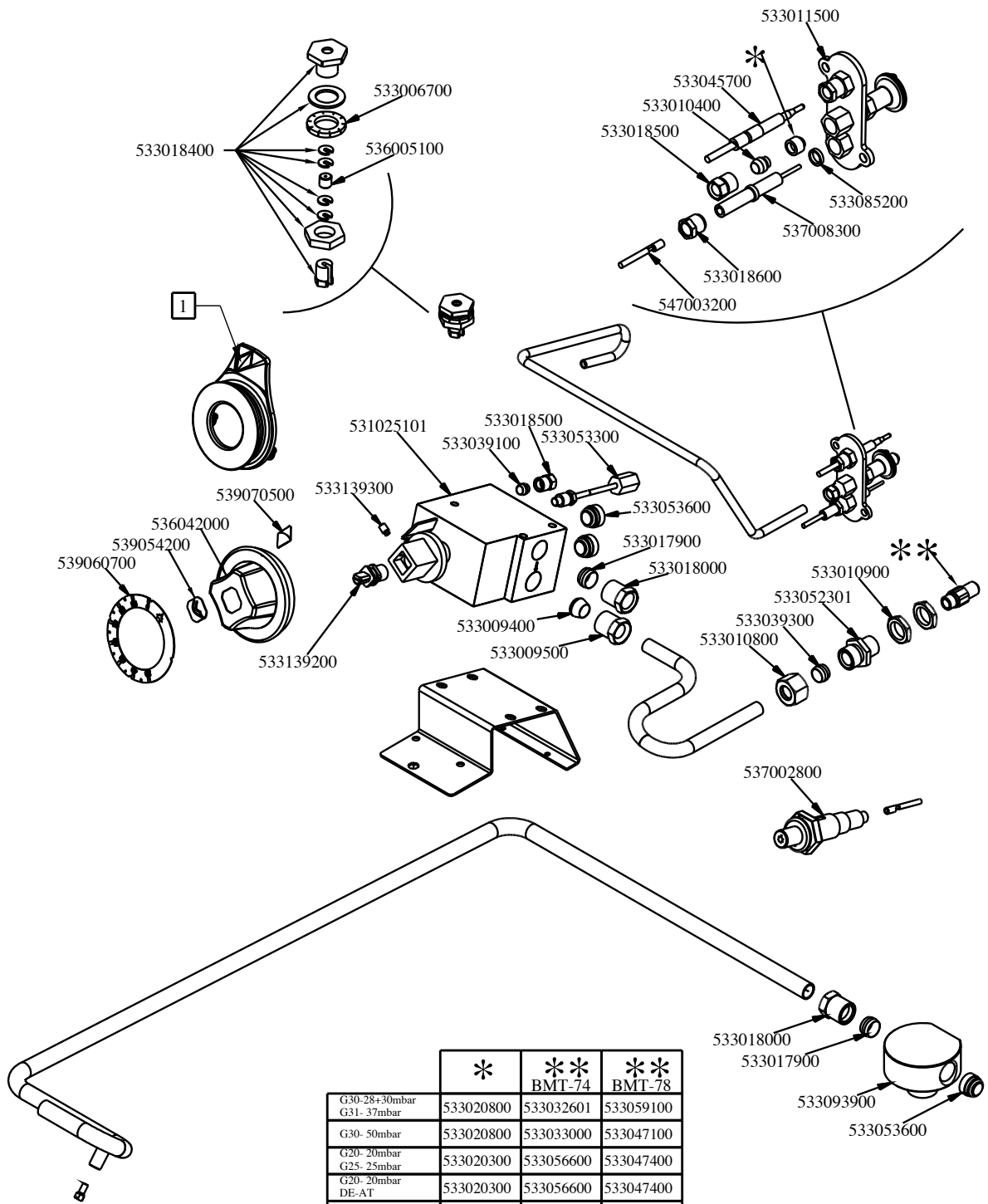
2021_11

1

| Kod | Nazev |
|-----------|------------------------------|
| 531026000 | BURNER FT-4/6/8G BM-4G |
| 541139201 | ASS.CRUSC.S607090 BMT-74/94G |
| 541151501 | UPPER PLATE BMT-74G |
| 533010500 | LEG M10*25 D.40 |
| 544385500 | RIGHT SIDE OF 70T LINE |
| 544385600 | LEFT SIDE OF 70T LINE |
| 531000100 | DRAIN COCK 3/4" |
| 533010100 | 3/4 D. 18 PIPE UNION |
| 533010200 | BICONE 18S |
| 533009600 | DRAIN COCK HANDLE |
| 536000300 | FIXED GRIP D.15*25*M6 |
| 544420700 | PROTEZ.BULBO BM S70 S90 |
| 541063100 | TANK DRAIN FILTER BS-4EM/CPM |
| 544120300 | DRAIN PIPE 22 FOR COCK 3/4"G |



BMT-74G
2021_11
2



| | * | ** | ** |
|------------------------------|-----------|-----------|-----------|
| | | BMT-74 | BMT-78 |
| G30-28+30mbar G31- 37mbar | 533020800 | 533032601 | 533059100 |
| G30- 50mbar | 533020800 | 533033000 | 533047100 |
| G20- 20mbar G25- 25mbar | 533020300 | 533056600 | 533047400 |
| G20- 20mbar DE-AT | 533020300 | 533056600 | 533047400 |
| G25- 20mbar | 533020300 | 533046200 | 533047300 |
| G25- 25mbar NL | 533020300 | 533046100 | 533047500 |
| G20- 25mbar | 533020300 | 533031901 | 533046400 |



BMT-74G
2021_11
2

| Kod | Nazev |
|-----------|-------------------------------------|
| 537002800 | PIEZOELECTRIC IGNITION M18 WITH NUT |
| 533010800 | TUBE NUT D.10 M16*1,5 |
| 533039300 | BICONE §10 |
| 533052301 | JOINT FOR NOZZLE HOLDER |
| 533010900 | NUT M14*1 H.4 |
| 533018000 | ELBOW FOR BICONE D.12 3/8 RS L20 |
| 533017900 | BICONE D.12 |
| 533093900 | FITTING GAS ENTRY 1/2G 2OUT 3/8G |
| 533053600 | EUROSIT VALVE PLUG |
| 531025101 | EUROSIT VALVE BM 30-100°C |
| 533039100 | BICONE §6 |
| 533018500 | FITTING FOR BICONE D.6 M10*1 |
| 533009400 | BICONE 10S |
| 533009500 | NIPPLE FOR BICONE 10S |
| 533011500 | PILOT BURNER 2 FLAMES 220 |
| 533085200 | SPACER FOR PILOT PLUG |
| 537008300 | ROUND PLUG §2,4- LONG ELECTRODE |
| 533018600 | PLUG FITTING |
| 547003200 | HIGH-VOLTAGE CABLE TUBE.§2 L=500 |
| 533010400 | BICONE D.6 |
| 533045700 | THERMOCOUPLE M9*1 500 |
| 533006700 | NOTCHED WASHER D.14 |
| 536005100 | GRAPHITE §07,4 GASKET |
| 533018400 | THREADED FITTING |
| 533020800 | NOZZLE 0160-FLUSS. (25) |
| 533020300 | NOZZLE 0160 (NATURAL GAS) 1-2 (41) |
| 533032601 | NOZZLE §85 CH12X30,0 |
| 533033000 | NOZZLE §075 CH12X30,0 |
| 533056600 | NOZZLE §135 CH12*30 M-BM4 |
| 533046200 | NOZZLE §150 CH12X30 L-BR TP |
| 533046100 | NOZZLE §140 CH12X30 MH-BR |
| 533031901 | NOZZLE §130 CH12*30 MH-FT34 |
| 533059100 | NOZZLE §125A CH12*30 G-BM8 |
| 533047100 | NOZZLE §100A CH12*30 GF-BM6/8 |
| 533047400 | NOZZLE §195 CH12*30 M-BM8 |
| 533047300 | NOZZLE §215 CH12*30 L-BM8 |
| 533047500 | NOZZLE §205 CH12*30 ML-BM-8G |



BMT-74G

2021_11

2

| Kod | Nazev |
|-----------|------------------------------------|
| 533046400 | NOZZLE §185 CH12*30 G-CPM |
| 539060700 | RED STICKING DISK 72 (030,090°) |
| 539018900 | INDEX FOR KNOB W/RED SIGN |
| 533139200 | SHORT PIVOT FOR BRASS KNOB |
| 536034700 | KNOB §77 4P. §08*6,5 F§30 |
| 539054200 | STAMP Ø20,5 CR."L" LOTUS R. |
| 533139300 | BURNISH HEADLESS SCREW M05*05 PCEI |
| 533053300 | THERMOCOUPLE EXTENSION M9*1 |