

# Technical data sheet

## Product features



### Rack conveyor dishwasher 270, cold water, left exit, corner pre-wash, corner dryer, heat recovery system

<b>Model</b>	<b>SAP Code</b>	00018453
--------------	-----------------	----------



- Display type: Touch display
- Number of programs: 5
- Number of skin: 2
- Maximal rack feed [racks/h]: 270
- Door clear height [mm]: 450
- Rack size [mm]: 500x500
- Water consumption of the washing cycle: 0,6-1,1
- Washing cycle time [s]: 18
- Detergent and rinse pump system: ProDose - accurate dosing with a peristaltic pump
- Wash pump type: two-way - DuoFlow
- Detergent dispenser: Yes
- Rinse aid dispenser: Yes

<b>SAP Code</b>	00018453	<b>Boiler power [kW]</b>	28.000
<b>Net Width [mm]</b>	3333	<b>Basin volume [l]</b>	70
<b>Net Depth [mm]</b>	990	<b>Tank power [kW]</b>	10.500
<b>Net Height [mm]</b>	1615	<b>Water consumption of the washing cycle</b>	0,6-1,1
<b>Net Weight [kg]</b>	690.00	<b>Washing cycle time [s]</b>	18
<b>Power electric [kW]</b>	44.100	<b>Maximal rack feed [racks/h]</b>	270
<b>Loading</b>	400 V / 3N - 50 Hz	<b>Door clear height [mm]</b>	450
<b>Boiler capacity [ l ]</b>	34.00	<b>Rack size [mm]</b>	500x500

# Technical data sheet

Technical drawing



Rack conveyor dishwasher 270, cold water, left exit, corner pre-wash, corner dryer, heat recovery system

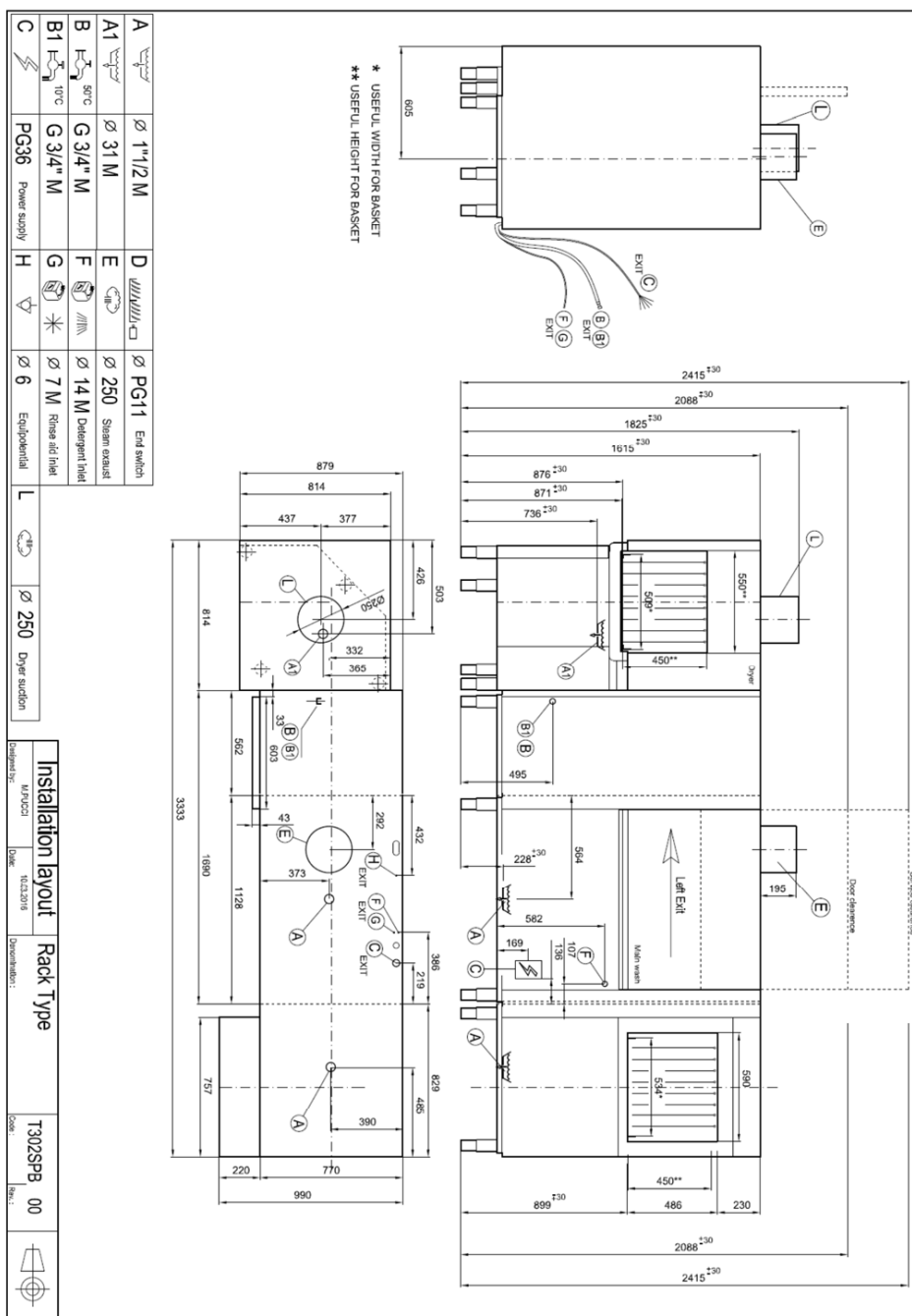
Model

SAP Code

00018453

TECHNICAL FILE

2021



# Technical data sheet

Technical parameters



Rack conveyor dishwasher 270, cold water, left exit, corner pre-wash, corner dryer, heat recovery system

Model

SAP Code

00018453

**1. SAP Code:**

00018453

**2. Article group:**

Tunel dishwasher line XT

**3. Net Width [mm]:**

3333

**4. Net Depth [mm]:**

990

**5. Net Height [mm]:**

1615

**6. Net Weight [kg]:**

690.00

**7. Gross Width [mm]:**

3700

**8. Gross depth [mm]:**

1200

**9. Gross Height [mm]:**

2060

**10. Gross Weight [kg]:**

740.00

**11. Device type:**

Electric unit

**12. Control type:**

Touchscreen

**13. Material:**

AISI 304

**14. Power electric [kW]:**

44.100

**15. Loading:**

400 V / 3N - 50 Hz

**16. Number of programs:**

5

**17. Opening of device:**

Retractable up

**18. Door clear height [mm]:**

450

**19. Inlet pressure:**

0,5-4

**20. Adjustable feet:**

Yes

**21. Number of skin:**

2

**22. Modular construction:**

Yes

**23. Pre-wash module:**

Yes

**24. Maximal rack feed [racks/h]:**

270

**25. Self-cleaning cycle:**

No

**26. Boiler capacity [ l ]:**

34.00

**27. Boiler power [kW]:**

28.000

**28. Basin volume [l]:**

70

# Technical data sheet

Technical parameters



**Rack conveyor dishwasher 270, cold water, left exit, corner pre-wash, corner dryer, heat recovery system**

**Model**

**SAP Code**

00018453

**29. Tank power [kW]:**

10,500

**30. Number of washing arms:**

5

**31. Number of rinsing arms:**

5

**32. Number of arms for both rinsing and washing:**

1

**33. Arm connection:**

Click-clack - easy removal with one hand

**34. Washing arm type:**

Firm

**35. Washing arm material:**

Stainless steel

**36. Atmospheric boiler with rinse pump:**

Yes

**37. Rinsing arm type:**

Firm

**38. Rinsing arm material:**

Stainless steel

**39. Deep drawn tank:**

Yes

**40. Drain filter:**

ProGRESSIVE + Evolution3 - triple filtration captures particles up to 0.8 mm in size, electronically controlled partial discharge before the rinsing phase ensures 0% loss of clean water into the waste

**41. Thermostop:**

Yes

**42. Boiler thermostat adjust:**

Yes

**43. Rack feed capacity:**

160-165-180-210-270

**44. Detergent and rinse pump system:**

ProDose - accurate dosing with a peristaltic pump

**45. Energy Saving system:**

Energy saving mode

**46. Rinse system:**

UltraRinse3 - composite arms common for rinsing and washing with geometry for spraying rinse water in thin jets directly against dishes

**47. Heating system:**

HotWash - System of simultaneous operation of the heating element of the bath and the boiler, reducing the time for starting the next cycle

**48. Hot water electric valve:**

No

**49. Rack size [mm]:**

500x500

**50. Min supply water temperature [°C]:**

10

**51. Max supply water temperature [°C]:**

60

**52. Built-in softener:**

No

# Technical data sheet

Technical parameters



Rack conveyor dishwasher 270, cold water, left exit, corner pre-wash, corner dryer, heat recovery system

**Model**

**SAP Code**

00018453

**53. Display type:**

Touch display

**54. Display size:**

5"

**55. Location of control panel:**

On the front panel - long side

**56. Drain pump:**

No

**57. Self-diagnostics:**

Yes

**58. Double rinse:**

Yes

**59. Wash pump type:**

two-way - DuoFlow

**60. Detergent dispenser:**

Yes

**61. Rinse aid dispenser:**

Yes

**62. Water consumption of the washing cycle:**

0,6-1,1

**63. Washing cycle time [s]:**

18

**64. Rinse water temperature [°C]:**

82 (65)

**65. Program High Capacity:**

Yes

**66. Program General purpose:**

Yes

**67. Program Prolonged contact (DIN 10534):**

Yes

**68. Program Glasses:**

Yes