

Technical data sheet

Product features



Rack conveyor dishwasher 200 racks/hour cold water, right exit

Model	SAP Code	00014494
--------------	-----------------	----------



- Display type: LCD ProSmart soft touch
- Number of programs: 4
- Number of skin: 2
- Maximal rack feed [racks/h]: 200
- Door clear height [mm]: 450
- Rack size [mm]: 500 x 500
- Water consumption of the washing cycle: 0,8 - 1,4
- Washing cycle time [s]: 18 - 37
- Detergent and rinse pump system: ProDose - accurate dosing with a peristaltic pump
- Wash pump type: two-way - DuoFlow
- Detergent dispenser: Yes
- Rinse aid dispenser: Yes

SAP Code	00014494	Boiler power [kW]	16.000
Net Width [mm]	1701	Basin volume [l]	70
Net Depth [mm]	770	Tank power [kW]	10.500
Net Height [mm]	1615	Water consumption of the washing cycle	0,8 - 1,4
Net Weight [kg]	193.00	Washing cycle time [s]	18 - 37
Power electric [kW]	30.200	Maximal rack feed [racks/h]	200
Loading	400 V / 3N - 50 Hz	Door clear height [mm]	450
Boiler capacity [l]	17.00	Rack size [mm]	500 x 500

Technical data sheet

Technical drawing

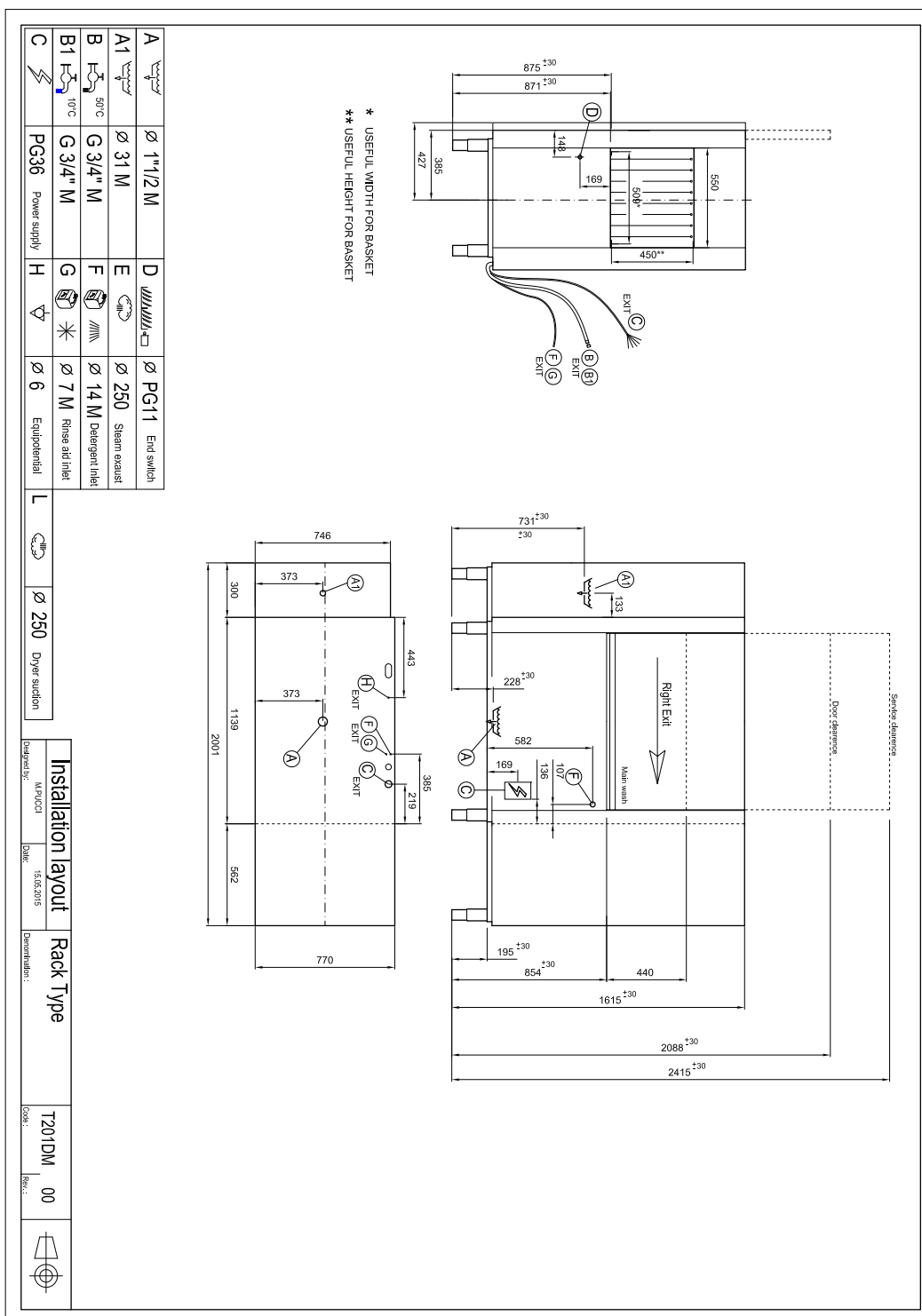


Rack conveyor dishwasher 200 racks/hour cold water, right exit

Model

SAP Code

00014494



Technical data sheet

Product benefits



Rack conveyor dishwasher 200 racks/hour cold water, right exit

Model

SAP Code

00014494

1

Stainless steel outer shell construction

round construction with stainless steel, rounded edges, Deep-drawn bathtub

- easy cleaning, high hygiene standard, long service life

2

LED Display

proScreen 4 local display + 2 LED strips

- easy control of the dishwasher operation
- continuous information on the status of the wash cycle
- diagnostics in the event of a fault

3

Detergent dispensers

two detergent and rinse aid dispensers

- precise chemical dosing by ProDose - precise dosing system for detergent and rinse aid by peristaltic pump setting of values via control panel

4

Double filter system

the chamber filter and the waste filter together with the ArchiMedes system provide a discharge system with increased water purification efficiency

- higher washing efficiency; longer life of the washing bath

5

Energy saving

Energy Saving energy saving system due to lowering the temperature of the boiler

- cost saving

6

Protection of fragile dishes

softStart system of gradual start of washing programs to protect fragile dishes

- protects stemmed glasses and other fragile utensils

7

Possibility of recovery

saving up to 40% of boiler energy
improves the comfort environment of the workplace environment without steam
saves water

- saving on energy and water costs; environmentally friendly system; safe system; pleasant workplace

8

Fast heating

Performance management allows the current running of the boiler and basins body

- quick first warm-up of the dishwasher
- smooth operation

9

Air break tank

the open system of the boiler rinse, in cooperation with the rinse pump, ensures a constant pressure and temperature of the rinse

- possibility to use in HACCP systems water temperature suitable for sterilization

10

Sliding system

a sliding system that moves the baskets through individual washing zones, the possibility to connect the drive to automatic tables

- quick distribution of dirty dishes

Technical data sheet

Technical parameters



Rack conveyor dishwasher 200 racks/hour cold water, right exit

Model	SAP Code	00014494
-------	----------	----------

1. SAP Code:

00014494

2. Article group:

Tunel dishwasher line CT

3. Net Width [mm]:

1701

4. Net Depth [mm]:

770

5. Net Height [mm]:

1615

6. Net Weight [kg]:

193.00

7. Gross Width [mm]:

2100

8. Gross depth [mm]:

920

9. Gross Height [mm]:

1850

10. Gross Weight [kg]:

230.00

11. Device type:

Electric unit

12. Control type:

Digital

13. Material:

AISI 304

14. Power electric [kW]:

30.200

15. Loading:

400 V / 3N - 50 Hz

16. Number of programs:

4

17. Opening of device:

Retractable up

18. Door clear height [mm]:

450

19. Inlet pressure:

1-4bar

20. Adjustable feet:

Yes

21. Number of skin:

2

22. Modular construction:

Yes

23. Pre-wash module:

No

24. Maximal rack feed [racks/h]:

200

25. Self-cleaning cycle:

No

26. Boiler capacity [l]:

17.00

27. Boiler power [kW]:

16.000

28. Basin volume [l]:

70

Technical data sheet

Technical parameters



Rack conveyor dishwasher 200 racks/hour cold water, right exit

Model	SAP Code	00014494
-------	----------	----------

29. Tank power [kW]:

10,500

30. Number of washing arms:

5

31. Number of rinsing arms:

6

32. Washing arm type:

Firm

33. Washing arm material:

Stainless steel

34. Atmospheric boiler with rinse pump:

Yes

35. Rinsing arm type:

Firm

36. Rinsing arm material:

Stainless steel

37. Deep drawn tank:

Yes

38. Rack support:

welded

39. Tank surface strainers:

stainless steel

40. Boiler thermostat adjust:

Yes

41. Rack feed capacity:

95-150-200

42. Detergent and rinse pump system:

ProDose - accurate dosing with a peristaltic pump

43. Hot water electric valve:

Yes

44. Rack size [mm]:

500 x 500

45. Min supply water temperature [°C]:

10

46. Max supply water temperature [°C]:

40

47. Display type:

LCD ProSmart soft touch

48. USB port:

Yes, for Firmware actualisation

49. Self-diagnostics:

Yes

50. Double rinse:

Yes

51. Wash pump type:

two-way - DuoFlow

52. Detergent dispenser:

Yes

53. Rinse aid dispenser:

Yes

54. Water consumption of the washing cycle:

0,8 - 1,4

55. Washing cycle time [s]:

18 - 37

56. Rinse water temperature [°C]:

82

Technical data sheet

Technical parameters



Rack conveyor dishwasher 200 racks/hour cold water, right exit

Model

SAP Code

00014494

57. Standard equipment for device:

1x glass basket, 1x plate basket, 1x cutlery basket

58. Program ProSpeed:

No

59. Program ProFessional:

No

60. Program ProFessional 2:

No

61. Program ProFessional 4:

No

62. Program ProFessional 6:

No

63. Program ProFessional 8:

No

64. Program ProFessional 10:

No

65. Program ProTemp:

No

66. Program ProSelf:

No

67. Program ProClean:

No

68. Program ProDrain:

No

69. Program ProEco:

No

70. Program ProNew:

No

71. Program ProLong:

No

72. Program ProGlass:

No

73. Program ProPlates:

No

74. Program ProCold:

No

75. Program ProWater:

No

76. Program ProActive:

No

77. Program ProActive 5:

No

78. Program ProActive 7:

No

79. Program ProSteel:

No

80. Program ProSan:

No

81. Program High Capacity:

Yes

82. Program General purpose:

Yes

83. Program Prolonged contact (DIN 10534):

Yes

84. Program Glasses:

Yes