

Technical data sheet

Product features



Cooking range solid top electric with static electric oven GN 2/1 - 4x plate 400 V

Model	SAP Code	00005461
--------------	-----------------	----------



- Device type: Electric unit
- Power consumption of the zone 1 [kW]: 2,5
- Power consumption of the zone 2 [kW]: 2,5
- Power consumption of the zone 3 [kW]: 2,5
- Power consumption of the zone 4 [kW]: 2,5
- Type of internal part of the appliance 1 (eg oven): Electric
- Type of internal part of the appliance 2 (eg oven): Static
- Protection of controls: IPX5
- Material: Stainless steel

SAP Code	00005461	Power consumption of the zone 2 [kW]	2,5
Net Width [mm]	800	Power consumption of the zone 3 [kW]	2,5
Net Depth [mm]	705	Power consumption of the zone 4 [kW]	2,5
Net Height [mm]	900	Type of internal part of the appliance 1 (eg oven)	Electric
Net Weight [kg]	159.00	Type of internal part of the appliance 2 (eg oven)	Static
Power electric [kW]	15.000	Width of internal part [mm]	670
Loading	400 V / 3N - 50 Hz	Depth of internal part [mm]	550
Number of zones	4	Height of internal part [mm]	340
Power consumption of the zone 1 [kW]	2,5	Ceramic glass dimensions [mm x mm]	770 x 570

Technical data sheet

Technical drawing

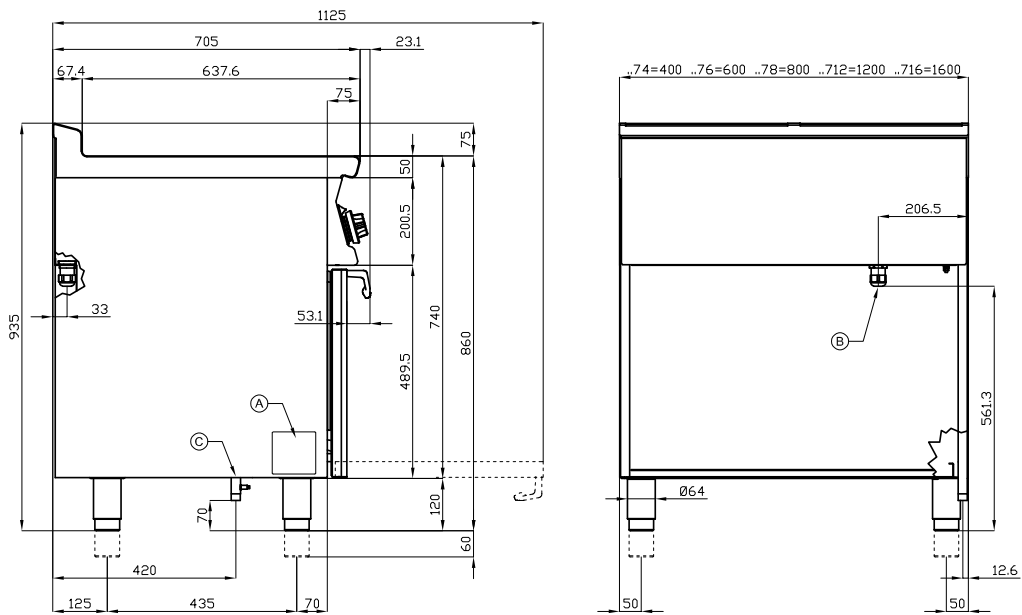


Cooking range solid top electric with static electric oven GN 2/1 - 4x plate 400 V

Model

SAP Code

00005461



A	Data plate	B	Electrical connection
---	------------	---	-----------------------

Technical data sheet

Product benefits



Cooking range solid top electric with static electric oven GN 2/1 - 4x plate 400 V

Model

SAP Code

00005461

1

Massive thal

20mm material ensures even distribution of heat and heating of the product (heating several pots at the same time at the same temperature)

material resistance

long life

- saving time
- ease of use
- savings on service interventions

2

Hygienic moldings of the top plate

absence of sharp corners and edges (potential places where dirt could stick)

smooth transitions

- easy quick cleaning

3

Degree of protection of the control elements IPX5

maintenance-free system

resistance to splash water

long life

- savings on service interventions
- easy cleaning and maintenance of equipment

4

All-stainless design

the material does not cut

wear resistance of the material

long life

- savings on service interventions
- easy cleaning and maintenance of equipment

5

Large electric oven with four positions for racks with static cooking

static baking

high capacity and variability

all-stainless design

- suitable for yeast dishes and desserts
- long service life
- easy to clean

Technical data sheet

Technical parameters



Cooking range solid top electric with static electric oven GN 2/1 - 4x plate 400 V

Model

SAP Code

00005461

1. SAP Code:

00005461

2. Net Width [mm]:

800

3. Net Depth [mm]:

705

4. Net Height [mm]:

900

5. Net Weight [kg]:

159.00

6. Gross Width [mm]:

830

7. Gross depth [mm]:

770

8. Gross Height [mm]:

1110

9. Gross Weight [kg]:

170.00

10. Device type:

Electric unit

11. Construction type of device:

With substructure

12. Power electric [kW]:

15.000

13. Loading:

400 V / 3N - 50 Hz

27. Service accessibility:

From the front by removing the front panel and waste fluid containers

14. Protection of controls:

IPX5

15. Material:

Stainless steel

16. Worktop type:

Molded - comfortable cleaning maintenance

17. Worktop material:

AISI 304

18. Worktop Thickness [mm]:

2.00

19. Number of zones:

4

20. Power consumption of the zone 1 [kW]:

2,5

21. Power consumption of the zone 2 [kW]:

2,5

22. Power consumption of the zone 3 [kW]:

2,5

23. Power consumption of the zone 4 [kW]:

2,5

24. Maximum device temperature [°C]:

450

25. Minimum device temperature [°C]:

50

26. Number of power control stages:

6

38. Oven material:

Stainless steel

Technical data sheet

Technical parameters



Cooking range solid top electric with static electric oven GN 2/1 - 4x plate 400 V

Model

SAP Code

00005461

28. Safety element:

thermocouple safety feature
safety thermostat 360 °C

29. Safety thermocouple:

Yes

30. Safety thermostat:

Yes

31. Safety thermostat up to x ° C:

360

32. Adjustable feet:

Yes

33. Number of burners/hot plates:

4

34. Type of gas cooking zones:

Thales

35. Type of electric cooking zones:

Tálové

36. Oven Type:

electrical static

37. Oven size:

GN 2/1

39. Type of internal part of the appliance 1 (eg oven):

Electric

40. Type of internal part of the appliance 2 (eg oven):

Static

41. Width of internal part [mm]:

670

42. Depth of internal part [mm]:

550

43. Height of internal part [mm]:

340

44. Maximum temperature of the inner chamber [°C]:

300

45. Minimum temperature of the inner chamber [°C]:

50

46. Number of internal parts:

4

47. Solid top thickness [mm]:

20

48. Ceramic glass dimensions [mm x mm]:

770 x 570