

Technical data sheet

Product features



Cooking range electric 2x plate on open cabinet 400 V

Model	SAP Code	00002956
--------------	-----------------	----------



- Device type: Electric unit
- Power consumption of the zone 1 [kW]: 3,5
- Power consumption of the zone 2 [kW]: 3,5
- Protection of controls: IPX5
- Material: AISI 304

SAP Code	00002956	Loading	400 V / 3N - 50 Hz
Net Width [mm]	400	Number of zones	2
Net Depth [mm]	900	Power consumption of the zone 1 [kW]	3,5
Net Height [mm]	900	Power consumption of the zone 2 [kW]	3,5
Net Weight [kg]	41.00	Diameter of device [mm]	300
Power electric [kW]	7.000		

Technical data sheet

Technical drawing

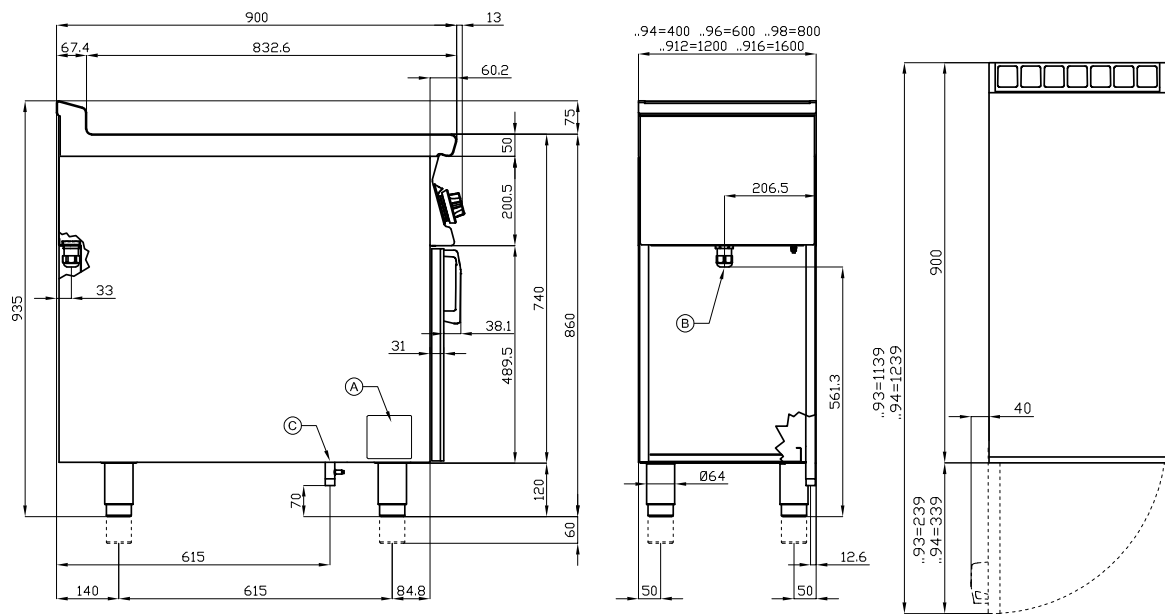


Cooking range electric 2x plate on open cabinet 400 V

Model

SAP Code

00002956



A	Data plate	B	Electrical connection
---	------------	---	-----------------------

Technical data sheet

Product benefits



Cooking range electric 2x plate on open cabinet 400 V

Model

SAP Code

00002956

1

Internal thermostatic plate protection

longer service life of the plates

- no overheating of the plates and no cracking

2

Degree of protection of the control elements IPX5

maintenance-free system

resistance to splash water

long life

- savings on service interventions
- easy cleaning and maintenance of equipment

3

All-stainless design

the material does not cut

wear resistance of the material

long life

- savings on service interventions
- easy cleaning and maintenance of equipment

4

Hygienic moldings of the top plate

absence of sharp corners and edges (potential places where dirt could stick)

smooth transitions

- easy quick cleaning

Technical data sheet

Technical parameters



Cooking range electric 2x plate on open cabinet 400 V

Model

SAP Code

00002956

1. SAP Code:

00002956

2. Net Width [mm]:

400

3. Net Depth [mm]:

900

4. Net Height [mm]:

900

5. Net Weight [kg]:

41.00

6. Gross Width [mm]:

430

7. Gross depth [mm]:

970

8. Gross Height [mm]:

1110

9. Gross Weight [kg]:

53.00

10. Device type:

Electric unit

11. Construction type of device:

With substructure

12. Power electric [kW]:

7.000

13. Loading:

400 V / 3N - 50 Hz

14. Protection of controls:

IPX5

15. Device color:

Stainless steel

16. Material:

AISI 304

17. Worktop type:

Molded - comfortable cleaning maintenance

18. Worktop material:

AISI 304

19. Worktop Thickness [mm]:

2.00

20. Number of zones:

2

21. Power consumption of the zone 1 [kW]:

3,5

22. Power consumption of the zone 2 [kW]:

3,5

23. Maximum device temperature [°C]:

300

24. Minimum device temperature [°C]:

50

25. Number of power control stages:

7

26. Service accessibility:

From the front by removing the front panel and waste fluid containers

27. Safety thermostat:

Yes

28. Adjustable feet:

Yes

Technical data sheet

Technical parameters



Cooking range electric 2x plate on open cabinet 400 V

Model

SAP Code

00002956

29. Number of burners/hot plates:

2

31. Burner type:

Cast iron, detachable, with internal and external combustion

30. Diameter of device [mm]:

300

32. Type of electric cooking zones:

Oval