

# Technical data sheet

## Product features



### Fry-top griddle plate 60x45 electric chromed smooth without cabinet 400 V

|              |                 |          |
|--------------|-----------------|----------|
| <b>Model</b> | <b>SAP Code</b> | 00001075 |
|--------------|-----------------|----------|



- Top type: Smooth
- Griddle dimensions [mm x mm]: 595 x 450
- Griddle thickness [mm]: 14.00
- Worktop material: Super chrom
- Maximum device temperature [°C]: 300
- Surface finish: SUPERCHROME - untreated chrome surface

|                        |          |                                     |                    |
|------------------------|----------|-------------------------------------|--------------------|
| <b>SAP Code</b>        | 00001075 | <b>Power electric [kW]</b>          | 6.750              |
| <b>Net Width [mm]</b>  | 600      | <b>Loading</b>                      | 400 V / 3N - 50 Hz |
| <b>Net Depth [mm]</b>  | 600      | <b>Griddle dimensions [mm x mm]</b> | 595 x 450          |
| <b>Net Height [mm]</b> | 280      | <b>Top type</b>                     | Smooth             |
| <b>Net Weight [kg]</b> | 63.00    |                                     |                    |

# Technical data sheet

Technical drawing

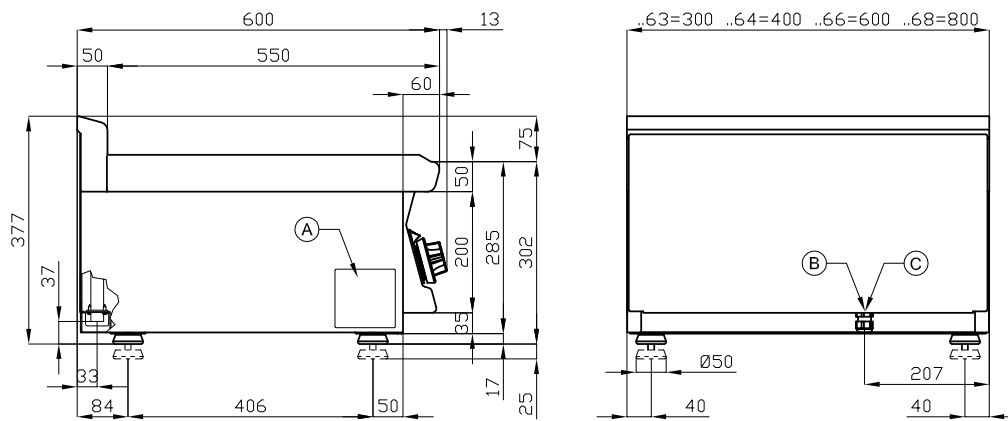


**Fry-top griddle plate 60x45 electric chromed smooth without cabinet 400 V**

**Model**

**SAP Code**

00001075



|   |            |  |   |                       |  |
|---|------------|--|---|-----------------------|--|
| A | Data plate |  | B | Electrical connection |  |
|---|------------|--|---|-----------------------|--|

# Technical data sheet

## Product benefits



### Fry-top griddle plate 60x45 electric chromed smooth without cabinet 400 V

Model

SAP Code

00001075

1

#### All-stainless design

long life  
resistance of AISI 304 stainless steel material  
the material does not cut

- savings on service interventions
- easier and faster operation

2

#### Degree of protection of the control elements IPX5

maintenance-free system  
resistance to splash water  
long life

- savings on service interventions
- easy cleaning and maintenance of equipment

3

#### Outlet for waste liquids

ensures that oil drips into the socket

- easy maintenance
- easy cleaning

4

#### High detachable hem

better hygienic conditions  
preventing grease from splashing onto  
ancillary equipment

- easy maintenance
- easy cleaning

5

#### Smooth plate made of chrome-plated steel

the product bakes less and is easier to clean  
a good warming of the meat with a groove

- time-saving for food preparation
- no reheating and long cooking times

6

#### Outlet for waste liquids

ensures that oil drips into the socket

- easy maintenance
- easy cleaning

7

#### Cooking unit for use on a table or on a base

variable use  
the possibility of placement in smaller spaces

- easy handling
- cost savings on substructure

# Technical data sheet

Technical parameters



## Fry-top griddle plate 60x45 electric chromed smooth without cabinet 400 V

| Model | SAP Code | 00001075 |
|-------|----------|----------|
|-------|----------|----------|

**1. SAP Code:**

00001075

**2. Net Width [mm]:**

600

**3. Net Depth [mm]:**

600

**4. Net Height [mm]:**

280

**5. Net Weight [kg]:**

63.00

**6. Gross Width [mm]:**

630

**7. Gross depth [mm]:**

690

**8. Gross Height [mm]:**

610

**9. Gross Weight [kg]:**

66.00

**10. Device type:**

Electric unit

**11. Construction type of device:**

Table top

**12. Power electric [kW]:**

6.750

**13. Loading:**

400 V / 3N - 50 Hz

**14. Protection of controls:**

IPX5

**15. Device color:**

Stainless steel

**16. Material:**

AISI 304 top plate and cladding

**17. Indicators:**

operation and warm-up

**18. Worktop material:**

Super chrom

**19. Worktop Thickness [mm]:**

2.50

**20. Surface finish:**

SUPERCHROME - untreated chrome surface

**21. Maximum device temperature [°C]:**

300

**22. Minimum device temperature [°C]:**

50

**23. Service accessibility:**

Trough the frontal panel

**24. Safety thermostat:**

Yes

**25. Adjustable feet:**

Yes

**26. Griddle dimensions [mm x mm]:**

595 x 450

**27. Griddle thickness [mm]:**

14.00

**28. Top type:**

Smooth