

# Technical data sheet

Product features



Electric grill water indirect 2 cooking areas 2x 38x66 on open cabinet 400 V

<b>Model</b>	<b>SAP Code</b>	00011387
--------------	-----------------	----------



- Grid size [mm x mm]: 380 x 660
- Removable rim: Yes
- Removable grid: Yes

<b>SAP Code</b>	00011387	<b>Power electric [kW]</b>	10.800
<b>Net Width [mm]</b>	800	<b>Loading</b>	400 V / 3N - 50 Hz
<b>Net Depth [mm]</b>	900	<b>Grid size [mm x mm]</b>	380 x 660
<b>Net Height [mm]</b>	900	<b>Worktop type</b>	Molded - comfortable cleaning maintenance
<b>Net Weight [kg]</b>	105.00		

# Technical data sheet

Technical drawing

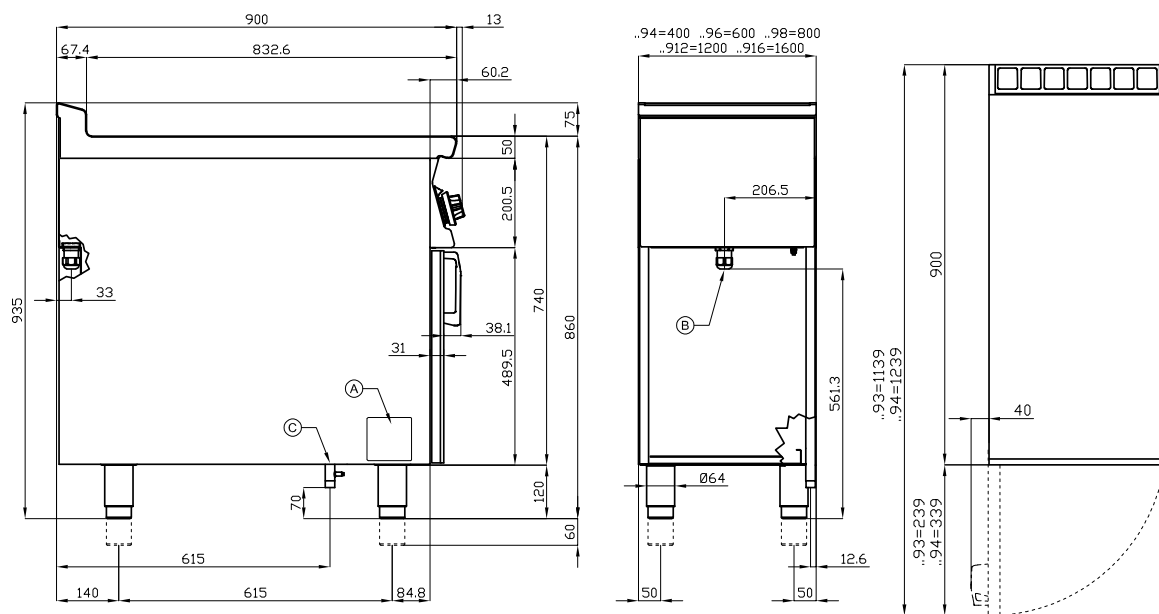


Electric grill water indirect 2 cooking areas 2x 38x66 on open cabinet 400 V

Model

SAP Code

00011387



A	Data plate		B	Electrical connection	
---	------------	--	---	-----------------------	--

# Technical data sheet

Product benefits



Electric grill water indirect 2 cooking areas 2x 38x66 on open cabinet 400 V

Model

SAP Code

00011387

1

## All-stainless design

long life  
resistance of AISI 304 stainless steel material  
the material does not cut

- savings on service interventions
- easier and faster operation

2

## Degree of protection of the control elements IPX5

maintenance-free system  
resistance to splash water  
long life

- savings on service interventions
- easy cleaning and maintenance of equipment

3

## Heating coils guided by a grill grate

preparation of food directly on the heated grill

- faster heating of the grate
- faster food preparation
- short reaction time to changes in the temperature control

# Technical data sheet

Technical parameters



Electric grill water indirect 2 cooking areas 2x 38x66 on open cabinet 400 V

Model

SAP Code

00011387

**1. SAP Code:**

00011387

**2. Net Width [mm]:**

800

**3. Net Depth [mm]:**

900

**4. Net Height [mm]:**

900

**5. Net Weight [kg]:**

105.00

**6. Gross Width [mm]:**

830

**7. Gross depth [mm]:**

970

**8. Gross Height [mm]:**

1110

**9. Gross Weight [kg]:**

105.00

**10. Device type:**

Electric unit

**11. Construction type of device:**

With substructure

**12. Power electric [kW]:**

10.800

**13. Loading:**

400 V / 3N - 50 Hz

**14. Protection of controls:**

IPX5

**15. Device color:**

Stainless steel

**16. Material:**

AISI 304

**17. Indicators:**

operation and warm-up

**18. Worktop type:**

Molded - comfortable cleaning maintenance

**19. Number of power control stages:**

6

**20. Grid material:**

Stainless steel

**21. Safety thermostat:**

Yes

**22. Adjustable feet:**

Yes

**23. Removable device container:**

Yes

**24. Removable rim:**

Yes

**25. Removable grid:**

Yes

**26. Grid size [mm x mm]:**

380 x 660

**27. Grid shape:**

special shape allowing the oil to drip into the water bath, protects the heating element

**28. Uniform heating:**

Yes