

# Technical data sheet

## Product features



### Multi-function fixed braising pan electric 20 l TOP 400 V

<b>Model</b>	<b>SAP Code</b>	00000158
--------------	-----------------	----------



- Bottom material: Steel - suitable for frying
- Bottom thickness: 16.00
- Basin volume [l]: 20
- Protection of controls: IPX5
- Basin dimensions [mm x mm x mm]: 505 x 410 x 100
- Service accessibility: Trough the frontal panel

<b>SAP Code</b>	00000158	<b>Loading</b>	400 V / 3N - 50 Hz
<b>Net Width [mm]</b>	600	<b>Bottom material</b>	Steel - suitable for frying
<b>Net Depth [mm]</b>	600	<b>Basin volume [l]</b>	20
<b>Net Height [mm]</b>	280	<b>Width of internal part [mm]</b>	505
<b>Net Weight [kg]</b>	35.00	<b>Depth of internal part [mm]</b>	410
<b>Power electric [kW]</b>	6.000	<b>Height of internal part [mm]</b>	100

# Technical data sheet

Technical drawing

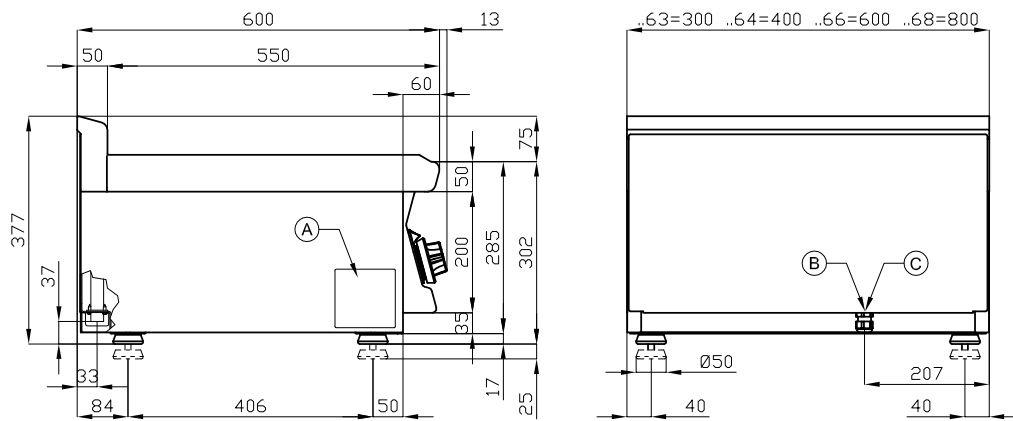


## Multi-function fixed braising pan electric 20 l TOP 400 V

Model

SAP Code

00000158



A	Data plate	B	Electrical connection
---	------------	---	-----------------------

# Technical data sheet

Product benefits



## Multi-function fixed braising pan electric 20 l TOP 400 V

Model

SAP Code

00000158

1

### All-stainless steel bathtub

long life  
resistance of AISI 304 stainless steel material  
the material does not cut

- savings on service interventions
- easier and faster operation

2

### Degree of protection of the control elements IPX5

maintenance-free system  
resistance to splash water  
long life

- savings on service interventions
- easy cleaning and maintenance of equipment

3

### Removable bathtub

easy removal of the entire container, no need to pump oil

- easy and safe handling

# Technical data sheet

## Technical parameters



### Multi-function fixed braising pan electric 20 l TOP 400 V

Model

SAP Code

00000158

**1. SAP Code:**

00000158

**2. Net Width [mm]:**

600

**3. Net Depth [mm]:**

600

**4. Net Height [mm]:**

280

**5. Net Weight [kg]:**

35.00

**6. Gross Width [mm]:**

630

**7. Gross depth [mm]:**

690

**8. Gross Height [mm]:**

610

**9. Gross Weight [kg]:**

45.00

**10. Device type:**

Electric unit

**11. Construction type of device:**

Table top

**12. Power electric [kW]:**

6.000

**13. Loading:**

400 V / 3N - 50 Hz

**14. Protection of controls:**

IPX5

**15. Device color:**

Stainless steel

**16. Material:**

AISI 304 top plate and cladding

**17. Indicators:**

operation and warm-up

**18. Worktop Thickness [mm]:**

1.00

**19. Basin volume [l]:**

20

**20. Basin dimensions [mm x mm x mm]:**

505 x 410 x 100

**21. Device capacity [l]:**

20.00

**22. Maximum device temperature [°C]:**

300

**23. Minimum device temperature [°C]:**

50

**24. Service accessibility:**

Trough the frontal panel

**25. Safety thermostat:**

Yes

**26. Adjustable feet:**

Yes

**27. Bottom thickness:**

16.00

**28. Bottom material:**

Steel - suitable for frying

# Technical data sheet

Technical parameters



Multi-function fixed braising pan electric 20 l TOP 400 V

**Model**

**SAP Code**

00000158

**29. Drain:**

No

**31. Depth of internal part [mm]:**

410

**30. Width of internal part [mm]:**

505

**32. Height of internal part [mm]:**

100