

Technical data sheet

Product features



Fry-top griddle plate 59x52 electric combined without cabinet 400 V

Model	SAP Code	00001064
-------	----------	----------



- Top type: Combined
- Griddle dimensions [mm x mm]: 560 x 510
- Griddle thickness [mm]: 14.00
- Worktop material: Stainless steel
- Container for liquid fat: Yes
- Maximum device temperature [°C]: 300
- Removable rim: Yes

SAP Code	00001064	Power electric [kW]	7.400
Net Width [mm]	600	Loading	400 V / 3N - 50 Hz
Net Depth [mm]	705	Griddle dimensions [mm x mm]	560 x 510
Net Height [mm]	280	Top type	Combined
Net Weight [kg]	63.00	Worktop type	Molded - comfortable cleaning maintenance

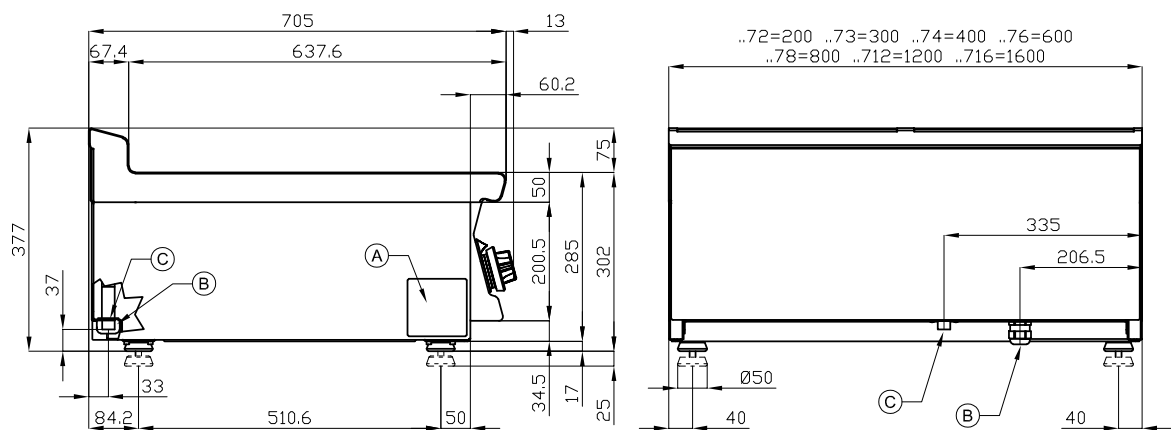
Technical data sheet

Technical drawing



Fry-top griddle plate 59x52 electric combined without cabinet 400 V

Model	SAP Code	00001064
-------	----------	----------



A	Data plate		B	Electrical connection	
---	------------	--	---	-----------------------	--

Technical data sheet

Product benefits



Fry-top griddle plate 59x52 electric combined without cabinet 400 V

Model	SAP Code	00001064
-------	----------	----------

1

All-stainless design

- long life
- resistance of AISI 304 stainless steel material
- the material does not cut
 - savings on service interventions
 - easier and faster operation

2

Degree of protection of the control elements IPX5

- maintenance-free system
- resistance to splash water
- long life
 - savings on service interventions
 - easy cleaning and maintenance of equipment

3

Outlet for waste liquids

- ensures that oil drips into the socket
 - easy maintenance
 - easy cleaning

4

High detachable hem

- better hygienic conditions
- preventing grease from splashing onto ancillary equipment
 - easy maintenance
 - easy cleaning

5

Combined steel plate

- good heat transfer and the surface does not get scratched
- enables preparation on smooth or grooved plates
 - time-saving in food preparation
 - easy preparation of different types of dishes

6

Outlet for waste liquids

- ensures that oil drips into the socket
 - easy maintenance
 - easy cleaning

7

Cooking unit for use on a table or on a base

- variable use
- the possibility of placement in smaller spaces
 - easy handling
 - cost savings on substructure

8

Combined grilling area

- straight and grooved grid
 - the possibility of preparing several types of gastronomic treatments at the same time
 - separate control of each area

Technical data sheet

Technical parameters



Fry-top griddle plate 59x52 electric combined without cabinet 400 V

Model	SAP Code	00001064
-------	----------	----------

1. SAP Code:

00001064

2. Article group:

Frying plates

3. Net Width [mm]:

600

4. Net Depth [mm]:

705

5. Net Height [mm]:

280

6. Net Weight [kg]:

63.00

7. Gross Width [mm]:

630

8. Gross depth [mm]:

770

9. Gross Height [mm]:

540

10. Gross Weight [kg]:

67.00

11. Device type:

Electric unit

12. Construction type of device:

Table top

13. Power electric [kW]:

7.400

14. Loading:

400 V / 3N - 50 Hz

15. Protection of controls:

IPX5

16. Device color:

Stainless steel

17. Material:

Stainless steel

18. Indicators:

operation and warm-up

19. Worktop type:

Molded - comfortable cleaning maintenance

20. Worktop material:

Stainless steel

21. Worktop Thickness [mm]:

2.00

22. Standard equipment for device:

comes with a stainless steel scraper for cleaning pastries

23. Maximum device temperature [°C]:

300

24. Minimum device temperature [°C]:

50

25. Power control type:

knob control

26. Service accessibility:

Trough the frontal panel

27. Safety element:

safety thermostat

28. Safety thermostat:

Yes

Technical data sheet

Technical parameters



Fry-top griddle plate 59x52 electric combined without cabinet 400 V

Model

SAP Code

00001064

29. Adjustable feet:

Yes

30. Griddle dimensions [mm x mm]:

560 x 510

31. Griddle thickness [mm]:

14.00

32. Container for liquid fat:

Yes

33. Removable rim:

Yes

34. Uniform heating:

Yes

35. Top type:

Combinated