

Technical data sheet

Product features



Electric grill water indirect 58x43 without cabinet 400 V

| | | |
|--------------|-----------------|----------|
| Model | SAP Code | 00000412 |
|--------------|-----------------|----------|

– Maximum device temperature [°C]: 300



| | | | |
|------------------------|----------|----------------------------|--------------------|
| SAP Code | 00000412 | Net Weight [kg] | 43.00 |
| Net Width [mm] | 600 | Power electric [kW] | 6.300 |
| Net Depth [mm] | 600 | Loading | 400 V / 3N - 50 Hz |
| Net Height [mm] | 280 | | |

Technical data sheet

Technical drawing

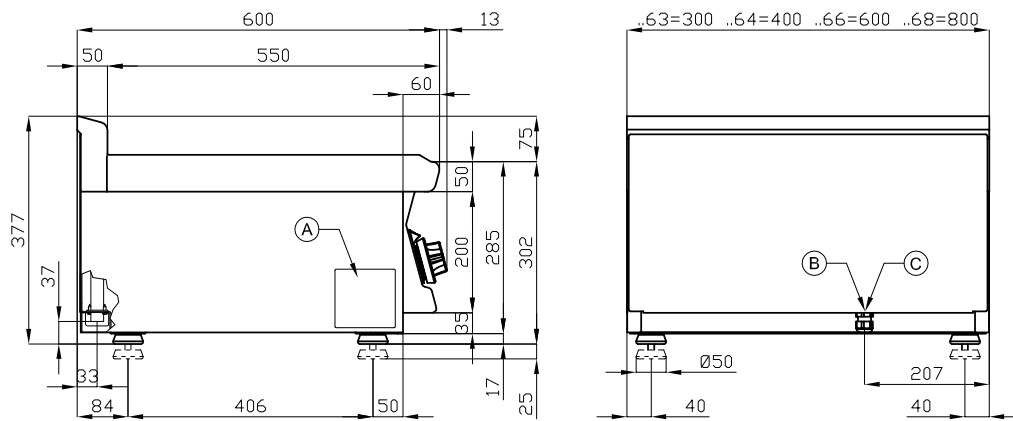


Electric grill water indirect 58x43 without cabinet 400 V

Model

SAP Code

00000412



| | | | | | |
|---|------------|--|---|-----------------------|--|
| A | Data plate | | B | Electrical connection | |
|---|------------|--|---|-----------------------|--|

Technical data sheet

Technical parameters



Electric grill water indirect 58x43 without cabinet 400 V

Model

SAP Code

00000412

1. SAP Code:

00000412

2. Net Width [mm]:

600

3. Net Depth [mm]:

600

4. Net Height [mm]:

280

5. Net Weight [kg]:

43.00

6. Gross Width [mm]:

630

7. Gross depth [mm]:

690

8. Gross Height [mm]:

610

9. Gross Weight [kg]:

48.00

10. Device type:

Electric unit

11. Construction type of device:

Table top

12. Power electric [kW]:

6.300

13. Loading:

400 V / 3N - 50 Hz

14. Protection of controls:

IPX5

15. Device color:

Stainless steel

16. Material:

AISI 304 top plate and cladding

17. Indicators:

operation and warm-up

18. Worktop Thickness [mm]:

1.00

19. Maximum device temperature [°C]:

300

20. Minimum device temperature [°C]:

50

21. Number of power control stages:

6

22. Service accessibility:

Trough the frontal panel

23. Safety thermostat:

Yes

24. Adjustable feet:

Yes

25. Removable device container:

Yes