

# Technical data sheet

## Product features



### Fry-top griddle plate 56x51 gas chromed smooth without cabinet

Model	SAP Code	00005869
-------	----------	----------



- Top type: Smooth
- Griddle dimensions [mm x mm]: 560 x 510
- Griddle thickness [mm]: 14.00
- Worktop material: Super chrom
- Container for liquid fat: Yes
- Maximum device temperature [°C]: 300
- Removable rim: Yes
- Ignition: Piezo+večný plamen

<b>SAP Code</b>	00005869	<b>Power gas [kW]</b>	10.500
<b>Net Width [mm]</b>	600	<b>Type of gas</b>	Natural gas, propane butane
<b>Net Depth [mm]</b>	705	<b>Griddle dimensions [mm x mm]</b>	560 x 510
<b>Net Height [mm]</b>	280	<b>Top type</b>	Smooth
<b>Net Weight [kg]</b>	62.00	<b>Worktop type</b>	Molded - comfortable cleaning maintenance

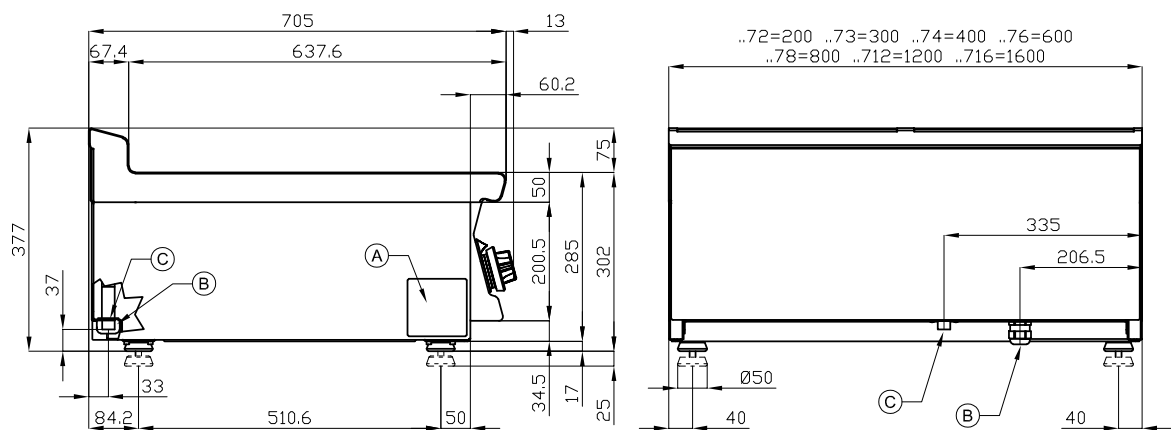
# Technical data sheet

Technical drawing



Fry-top griddle plate 56x51 gas chromed smooth without cabinet

Model	SAP Code	00005869
-------	----------	----------



A	Data plate		C	Gas connection	ISO 7-1 1/2" M
---	------------	--	---	----------------	----------------

# Technical data sheet

## Product benefits



### Fry-top griddle plate 56x51 gas chromed smooth without cabinet

Model

SAP Code

00005869

1

#### **Safety element – thermocouple**

safe service for staff  
there is no unnecessary gas leakage  
long life

- savings on service interventions
- easier and faster operation

2

#### **All-stainless design**

long life  
resistance of AISI 304 stainless steel material  
the material does not cut

- savings on service interventions
- easy cleaning and maintenance of equipment

3

#### **Degree of protection of the control elements IPX5**

maintenance-free system  
resistance to splash water  
long life

- savings on service interventions
- easy cleaning and maintenance of equipment

4

#### **Outlet for waste liquids**

ensures that oil drips into the socket

- easy maintenance
- easy cleaning

5

#### **High detachable hem**

better hygienic conditions  
preventing grease from splashing onto ancillary equipment

- easy maintenance
- easy cleaning

6

#### **Smooth plate made of chrome-plated steel**

the product bakes less and is easier to clean  
uniform heating

- time-saving for food preparation
- no reheating and long cooking times

7

#### **Cooking unit for use on a table or on a base**

variable use  
the possibility of placement in smaller spaces

- easy handling
- cost savings on substructure

8

#### **Surface treatment “Superchrom”**

a thicker layer of protective chrome applied with new technology

- the top is more scratch resistant
- more convenient and faster handling of food on the plate
- the possibility of preparing more delicate types of food
- the plate does not get dirty, does not swell

# Technical data sheet

## Technical parameters



### Fry-top griddle plate 56x51 gas chromed smooth without cabinet

**Model**

**SAP Code**

00005869

**1. SAP Code:**

00005869

**2. Article group:**

Frying plates

**3. Net Width [mm]:**

600

**4. Net Depth [mm]:**

705

**5. Net Height [mm]:**

280

**6. Net Weight [kg]:**

62.00

**7. Gross Width [mm]:**

630

**8. Gross depth [mm]:**

770

**9. Gross Height [mm]:**

540

**10. Gross Weight [kg]:**

68.00

**11. Device type:**

Gas unit

**12. Construction type of device:**

Table top

**13. Power gas [kW]:**

10.500

**14. Ignition:**

Piezo+večný plamen

**15. Type of gas:**

Natural gas, propane butane

**16. Protection of controls:**

IPX5

**17. Device color:**

Stainless steel

**18. Material:**

Stainless steel

**19. Indicators:**

operation and warm-up

**20. Worktop type:**

Molded - comfortable cleaning maintenance

**21. Worktop material:**

Super chrom

**22. Worktop Thickness [mm]:**

2.00

**23. Maximum device temperature [°C]:**

300

**24. Minimum device temperature [°C]:**

50

**25. Power control type:**

knob control

**26. Service accessibility:**

Trough the frontal panel

**27. Safety element:**

safety thermostat

**28. Safety thermostat:**

Yes

# Technical data sheet

Technical parameters



## Fry-top griddle plate 56x51 gas chromed smooth without cabinet

**Model**

**SAP Code**

00005869

**29. Adjustable feet:**

Yes

**30. Griddle dimensions [mm x mm]:**

560 x 510

**31. Griddle thickness [mm]:**

14.00

**32. Container for liquid fat:**

Yes

**33. Removable rim:**

Yes

**34. Uniform heating:**

Yes

**35. Top type:**

Smooth