

Technical data sheet

Product features



Pasta cooker electric 40 + 40 l with cabinet 400 V

Model	SAP Code	00000366
--------------	-----------------	----------



- Basin volume [l]: 40
- Water inlet: mechanical tap
- Drain type: Through the substructure with connection to waste
- Drain: Yes
- Material: Stainless steel
- Protection of controls: IPX5
- Maximum device temperature [°C]: 110

SAP Code	00000366	Loading	400 V / 3N - 50 Hz
Net Width [mm]	800	Basin volume [l]	40
Net Depth [mm]	900	Width of internal part [mm]	307
Net Height [mm]	900	Depth of internal part [mm]	509
Net Weight [kg]	82.00	Height of internal part [mm]	327
Power electric [kW]	27.000		

Technical data sheet

Technical drawing

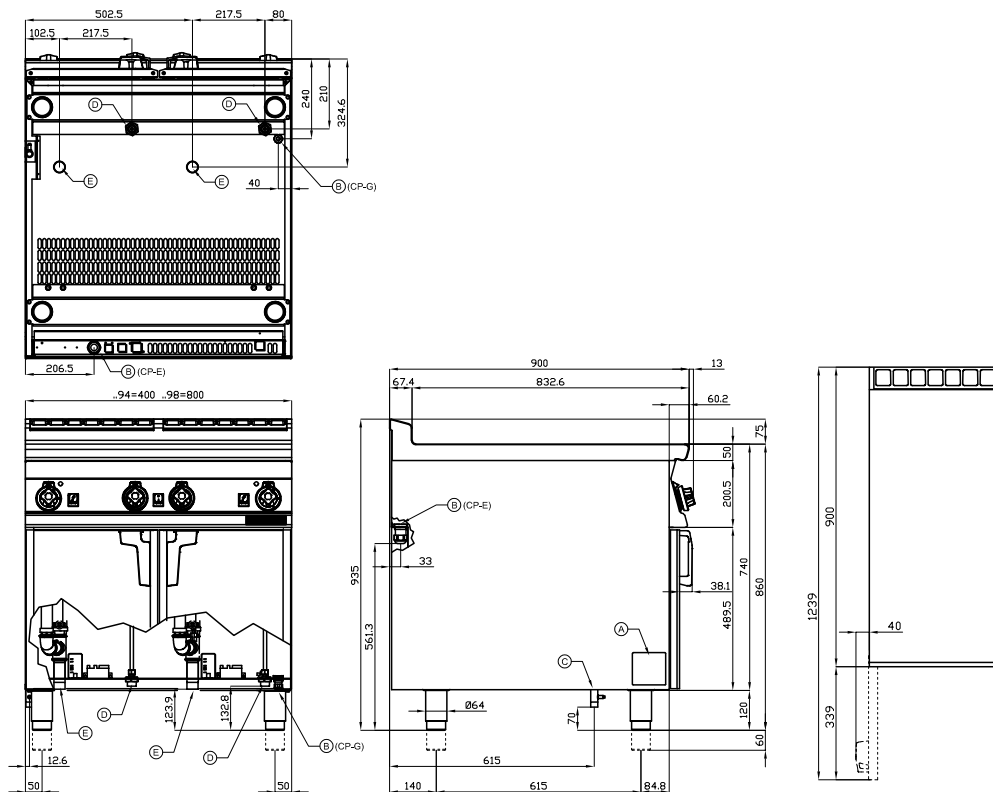


Pasta cooker electric 40 + 40 l with cabinet 400 V

Model

SAP Code

00000366



A	Data plate		B	Electrical connection	
D	Cold water connection	ISO 7-1 3/4" M	E	Water drainage	ISO 7-1 1" M

Technical data sheet

Product benefits



Pasta cooker electric 40 + 40 l with cabinet 400 V

Model

SAP Code

00000366

1

All-stainless steel bathtub

long life
resistance of AISI 304 stainless steel material
the material does not cut

- savings on service interventions
- easier and faster operation

2

Degree of protection of the control elements IPX5

maintenance-free system
resistance to splash water
long life

- savings on service interventions
- easy cleaning and maintenance of equipment

3

Pressure switch microswitch

microswitch preventing the device from running when there is no water in the bath

- prevents destruction of the equipment by overheating

4

Rotating heating element

longer lifetime
easy access

- effective cleaning when the body is tipped out
- easy access even to corners and time saving

5

Outlet to a removable collector in the substructure with the option of connecting directly to the waste

draining the bath into a prepared container or into the waste

- easy and safe handling
- easier cleaning of the cooking vessel

6

Integrated filling of the water bath

filling valve directly above the cooking vessel

- possibility of adding water during cooking
- easier cleaning

Technical data sheet

Technical parameters



Pasta cooker electric 40 + 40 l with cabinet 400 V

Model

SAP Code

00000366

1. SAP Code:

00000366

2. Net Width [mm]:

800

3. Net Depth [mm]:

900

4. Net Height [mm]:

900

5. Net Weight [kg]:

82.00

6. Gross Width [mm]:

830

7. Gross depth [mm]:

970

8. Gross Height [mm]:

1110

9. Gross Weight [kg]:

98.00

10. Device type:

Electric unit

11. Construction type of device:

With substructure

12. Power electric [kW]:

27.000

13. Loading:

400 V / 3N - 50 Hz

14. Protection of controls:

IPX5

15. Device color:

Stainless steel

16. Material:

Stainless steel

17. Indicators:

operation and warm-up

18. Worktop type:

Molded - comfortable cleaning maintenance

19. Basin volume [l]:

40

20. Basin dimensions [mm x mm x mm]:

307 x 509 x 327

21. Maximum device temperature [°C]:

110

22. Minimum device temperature [°C]:

30

23. Safety thermostat:

Yes

24. Adjustable feet:

Yes

25. Heating element material:

AISI 304

26. Number of basins:

2

27. Basin material:

AISI 316 - Stainless steel highly resistant to salt water

28. Ratio power/volume [kW/l]:

27.00

Technical data sheet

Technical parameters



Pasta cooker electric 40 + 40 l with cabinet 400 V

Model

SAP Code

00000366

29. Heating element construction:

Swivel

33. Width of internal part [mm]:

307

30. Water inlet:

mechanical tap

34. Depth of internal part [mm]:

509

31. Drain type:

Through the substructure with connection to waste

35. Height of internal part [mm]:

327

32. Drain:

Yes