

# Technical data sheet

## Product features



### Cooking range solid top combined with static electric oven GN 1/1 - 5x burner

|              |                 |          |
|--------------|-----------------|----------|
| <b>Model</b> | <b>SAP Code</b> | 00007190 |
|--------------|-----------------|----------|



- Device type: Combined unit
- Power consumption of the zone 1 [kW]: 5,5
- Power consumption of the zone 2 [kW]: 3,5
- Power consumption of the zone 3 [kW]: 3,5
- Ignition: Electric
- Type of internal part of the appliance 1 (eg oven): Electric
- Type of internal part of the appliance 2 (eg oven): Static with a grill
- Protection of controls: IPX5
- Material: AISI 304 top plate and cladding

|                            |                             |   |                     |
|----------------------------|-----------------------------|---|---------------------|
| <b>SAP Code</b>            | 00007190                    | <b>Power consumption of the zone 1 [kW]</b>               | 5,5                 |
| <b>Net Width [mm]</b>      | 1000                        | <b>Power consumption of the zone 2 [kW]</b>               | 3,5                 |
| <b>Net Depth [mm]</b>      | 600                         | <b>Power consumption of the zone 3 [kW]</b>               | 3,5                 |
| <b>Net Height [mm]</b>     | 900                         | <b>Type of internal part of the appliance 1 (eg oven)</b> | Electric            |
| <b>Net Weight [kg]</b>     | 155.00                      | <b>Type of internal part of the appliance 2 (eg oven)</b> | Static with a grill |
| <b>Power electric [kW]</b> | 2.620                       | <b>Width of internal part [mm]</b>                        | 640                 |
| <b>Loading</b>             | 230 V / 1N - 50 Hz          | <b>Depth of internal part [mm]</b>                        | 420                 |
| <b>Power gas [kW]</b>      | 23.500                      | <b>Height of internal part [mm]</b>                       | 350                 |
| <b>Type of gas</b>         | Natural gas, propane butane | <b>Solid top dimensions [mm x mm]</b>                     | 15                  |
| <b>Number of zones</b>     | 3                           |   |                     |

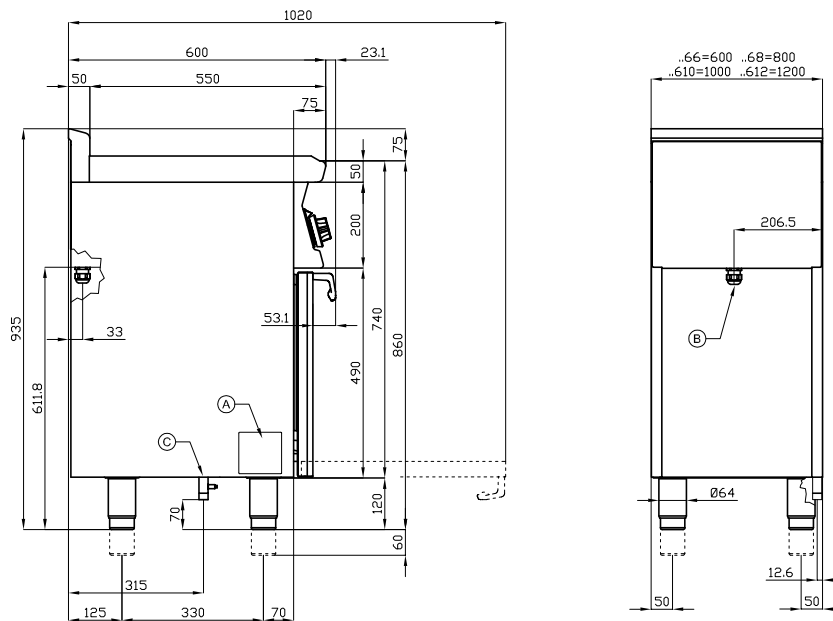
# Technical data sheet

Technical drawing



Cooking range solid top combined with static electric oven GN 1/1 - 5x burner

|              |                 |          |
|--------------|-----------------|----------|
| <b>Model</b> | <b>SAP Code</b> | 00007190 |
|--------------|-----------------|----------|



|   |                |                |   |                       |  |
|---|----------------|----------------|---|-----------------------|--|
| A | Data plate     |                | B | Electrical connection |  |
| C | Gas connection | ISO 7-1 1/2" M |   |                       |  |

# Technical data sheet

## Product benefits



### Cooking range solid top combined with static electric oven GN 1/1 - 5x burner

|              |                 |          |
|--------------|-----------------|----------|
| <b>Model</b> | <b>SAP Code</b> | 00007190 |
|--------------|-----------------|----------|

**1**

#### Massive construction of burners

- high performance and efficiency
- brass burners removable
- eternal flame
- long life
- demountable
  - energy saving (perfect combustion)
  - time saving for food preparation
  - easy maintenance/cleaning

**2**

#### Hygienic moldings of the top plate

- absence of sharp corners and edges (potential places where dirt could stick)
- smooth transitions
  - easy quick cleaning

**3**

#### Degree of protection of the control elements IPX5

- maintenance-free system
- resistance to splash water
- long life
  - savings on service interventions
  - easy cleaning and maintenance of equipment

**4**

#### All-stainless design

- the material does not cut
- wear resistance of the material
- long life
  - savings on service interventions
  - easy cleaning and maintenance of equipment

**5**

#### Safety element – thermocouple

- safe operation for personnel
- there is no overheating and damage to the thallus
- long life
  - savings on service interventions
  - easier and faster operation

**6**

#### Large electric oven with four positions for racks with static cooking

- possibility of baking
- high capacity and variability
- all-stainless design
  - suitable for yeast dishes and desserts
  - long service life
  - easy to clean

**7**

#### Massive thal

- 15mm material ensures even distribution of heat and heating of the product (heat several pots at the same time at the same temperature)
- material resistance
- long life
  - time saving
  - ease of operation
  - savings on service interventions

# Technical data sheet

Technical parameters



Cooking range solid top combined with static electric oven GN 1/1 - 5x burner

Model

SAP Code

00007190

**1. SAP Code:**

00007190

**2. Net Width [mm]:**

1000

**3. Net Depth [mm]:**

600

**4. Net Height [mm]:**

900

**5. Net Weight [kg]:**

155.00

**6. Gross Width [mm]:**

1030

**7. Gross depth [mm]:**

670

**8. Gross Height [mm]:**

1110

**9. Gross Weight [kg]:**

165.00

**10. Device type:**

Combined unit

**11. Construction type of device:**

With substructure

**12. Power electric [kW]:**

2.620

**13. Loading:**

230 V / 1N - 50 Hz

**14. Power gas [kW]:**

23.500

**15. Ignition:**

Electric

**16. Type of gas:**

Natural gas, propane butane

**17. Protection of controls:**

IPX5

**18. Device color:**

Stainless steel

**19. Material:**

AISI 304 top plate and cladding

**20. Indicators:**

operation and warm-up

**21. Worktop Thickness [mm]:**

1.00

**22. Number of zones:**

3

**23. Power consumption of the zone 1 [kW]:**

5,5

**24. Power consumption of the zone 2 [kW]:**

3,5

**25. Power consumption of the zone 3 [kW]:**

3,5

**26. Number of power control stages:**

6

**27. Service accessibility:**

Trough the frontal panel

**28. Safety thermocouple:**

Yes

# Technical data sheet

Technical parameters



Cooking range solid top combined with static electric oven GN 1/1 - 5x burner

Model

SAP Code

00007190

**29. Safety thermostat:**

Yes

**39. Depth of internal part [mm]:**

420

**30. Safety thermostat up to x ° C:**

360

**40. Height of internal part [mm]:**

350

**31. Adjustable feet:**

Yes

**41. Maximum temperature of the inner chamber [°C]:**

300

**32. Number of burners/hot plates:**

5

**42. Minimum temperature of the inner chamber [°C]:**

50

**33. Type of gas cooking zones:**

Thales + Cast iron burners

**43. Number of internal parts:**

4

**34. Oven Type:**

electrical static with grill

**44. Solid top thickness [mm]:**

15

**35. Oven size:**

640 x 420 x 350

**45. Solid top dimensions [mm x mm]:**

15

**36. Type of internal part of the appliance 1 (eg oven):**

Electric

**46. Solid top material:**

chrome-molybdenum

**37. Type of internal part of the appliance 2 (eg oven):**

Static with a grill

**47. Solid top ignition:**

Piezo

**38. Width of internal part [mm]:**

640