

# Technical data sheet

## Product features



### Cooking range gas 6x burner on open cabinet

Model	SAP Code	00002953
-------	----------	----------



- Device type: Gas unit
- Power consumption of the zone 1 [kW]: 10
- Power consumption of the zone 2 [kW]: 10
- Power consumption of the zone 3 [kW]: 7
- Power consumption of the zone 4 [kW]: 7
- Power consumption of the zone 5 [kW]: 7
- Power consumption of the zone 6 [kW]: 4
- Ignition: Eternal flame
- Protection of controls: IPX5
- Material: AISI 304

<b>SAP Code</b>	00002953	<b>Number of zones</b>	6
<b>Net Width [mm]</b>	1200	<b>Power consumption of the zone 1 [kW]</b>	10
<b>Net Depth [mm]</b>	900	<b>Power consumption of the zone 2 [kW]</b>	10
<b>Net Height [mm]</b>	900	<b>Power consumption of the zone 3 [kW]</b>	7
<b>Net Weight [kg]</b>	120.00	<b>Power consumption of the zone 4 [kW]</b>	7
<b>Power gas [kW]</b>	45.000	<b>Power consumption of the zone 5 [kW]</b>	7
<b>Type of gas</b>	Natural gas, propane butane	<b>Power consumption of the zone 6 [kW]</b>	4

# Technical data sheet

Technical drawing

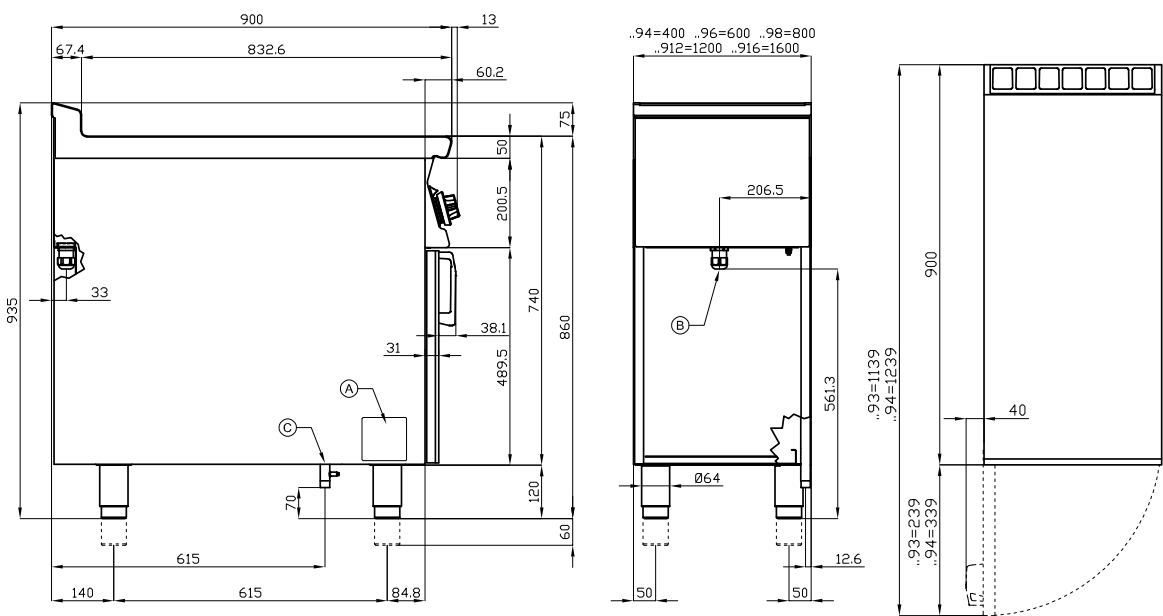


Cooking range gas 6x burner on open cabinet

Model

SAP Code

00002953



A	Data plate		C	Gas connection	ISO 7-1 3/4" M
---	------------	--	---	----------------	----------------

# Technical data sheet

## Product benefits



### Cooking range gas 6x burner on open cabinet

Model

SAP Code

00002953

1

#### Massive construction of burners

high performance and efficiency  
brass burners removable  
eternal flame  
long life  
demountable

- energy saving (perfect combustion)
- time saving for food preparation
- easy maintenance/cleaning

2

#### Hygienic moldings of the top plate

absence of sharp corners and edges (potential places where dirt could stick)  
smooth transitions

- easy quick cleaning

3

#### Degree of protection of the control elements IPX5

maintenance-free system  
resistance to splash water  
long life

- savings on service interventions
- easy cleaning and maintenance of equipment

4

#### All-stainless design

the material does not cut  
wear resistance of the material  
long life

- savings on service interventions
- easy cleaning and maintenance of equipment

5

#### Safety element – thermocouple

safe operation for personnel  
there is no overheating and damage to the thallus  
long life

- savings on service interventions
- easier and faster operation

# Technical data sheet

## Technical parameters



### Cooking range gas 6x burner on open cabinet

**Model**

**SAP Code**

00002953

**1. SAP Code:**

00002953

**2. Article group:**

Stoves

**3. Net Width [mm]:**

1200

**4. Net Depth [mm]:**

900

**5. Net Height [mm]:**

900

**6. Net Weight [kg]:**

120.00

**7. Gross Width [mm]:**

1230

**8. Gross depth [mm]:**

970

**9. Gross Height [mm]:**

1110

**10. Gross Weight [kg]:**

142.00

**11. Device type:**

Gas unit

**12. Construction type of device:**

With substructure

**13. Power gas [kW]:**

45.000

**14. Ignition:**

Eternal flame

**15. Type of gas:**

Natural gas, propane butane

**16. Protection of controls:**

IPX5

**17. Device color:**

Stainless steel

**18. Material:**

AISI 304

**19. Worktop type:**

Molded - comfortable cleaning maintenance

**20. Worktop material:**

AISI 304

**21. Worktop Thickness [mm]:**

2.00

**22. Number of zones:**

6

**23. Power consumption of the zone 1 [kW]:**

10

**24. Power consumption of the zone 2 [kW]:**

10

**25. Power consumption of the zone 3 [kW]:**

7

**26. Power consumption of the zone 4 [kW]:**

7

**27. Power consumption of the zone 5 [kW]:**

7

**28. Power consumption of the zone 6 [kW]:**

4

# Technical data sheet

Technical parameters



## Cooking range gas 6x burner on open cabinet

**Model**

**SAP Code**

00002953

### 29. Number of power control stages:

6

### 30. Grid material:

Cast iron

### 31. Service accessibility:

From the front by removing the front panel and waste fluid containers

### 32. Safety thermocouple:

Yes

### 33. Adjustable feet:

Yes

### 34. Number of burners/hot plates:

6

### 35. Type of gas cooking zones:

Classic

### 36. Burner type:

Brass, detachable