

Technical data sheet

Product features



Boiling kettle gas indirect 50l

Model	SAP Code	00013692
--------------	-----------------	----------



- Device type: Gas unit
- Device heating type: Indirect
- Ignition: Piezo+veĀĀnĀĀ plamen
- Steam pressure regulation: Automatic - the pressure switch regulates the performance of the device
- Filling: Mechanical cock
- Jacket filling: Automatic
- Drain valve diameter: 2
- Basin dimensions [mm x mm x mm]: d400 x 450
- Basin volume [l]: 50

SAP Code	00013692	Power gas [kW]	15.500
Net Width [mm]	800	Type of gas	Natural gas, propane butane
Net Depth [mm]	705	Basin volume [l]	50
Net Height [mm]	900	Basin dimensions [mm x mm x mm]	d400 x 450
Net Weight [kg]	110.00	Device heating type	Indirect
Loading	230 V / 1N - 50 Hz	Steam pressure regulation	Automatic - the pressure switch regulates the performance of the device

Technical data sheet

Technical drawing

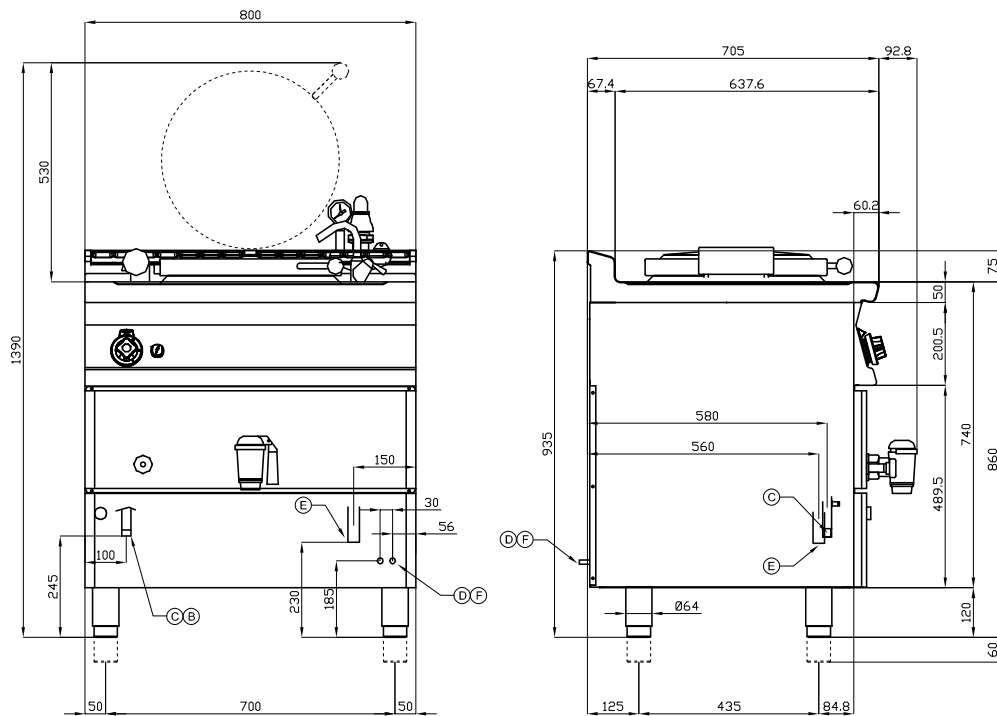


Boiling kettle gas indirect 50l

Model

SAP Code

00013692



A	Data plate		C	Gas connection	ISO 7-1 3/4" M
D	Cold water connection	Ø10mm	E	Water drainage	Ø25mm
F	Hot water connection	Ø10mm			

Technical data sheet

Technical parameters



Boiling kettle gas indirect 50l

Model

SAP Code

00013692

1. SAP Code:

00013692

2. Net Width [mm]:

800

3. Net Depth [mm]:

705

4. Net Height [mm]:

900

5. Net Weight [kg]:

110.00

6. Gross Width [mm]:

830

7. Gross depth [mm]:

770

8. Gross Height [mm]:

1110

9. Gross Weight [kg]:

120.00

10. Device type:

Gas unit

11. Construction type of device:

With substructure

12. Loading:

230 V / 1N - 50 Hz

13. Power gas [kW]:

15.500

14. Ignition:

Piezo+veÄřnÄř plamen

15. Type of gas:

Natural gas, propane butane

16. Protection of controls:

IPX4

17. Device color:

Stainless steel

18. Material:

AISI 304 top plate and cladding

19. Indicators:

operation and warm-up

20. Drain valve diameter:

2

21. Worktop type:

Molded - comfortable cleaning maintenance

22. Worktop material:

AISI 304

23. Worktop Thickness [mm]:

2.00

24. Device heating type:

Indirect

25. Basin volume [l]:

50

26. Basin dimensions [mm x mm x mm]:

d400 x 450

27. Power control type:

infinitely adjustable power

28. Service accessibility:

Trough the frontal panel

Technical data sheet

Technical parameters



Boiling kettle gas indirect 50l

Model

SAP Code

00013692

29. Safety element:

the safety pressure fitting prevents the risk of overpressurization of the duplicator and subsequent explosion
safety element "thermocouple"

30. Safety thermocouple:

Yes

31. Adjustable feet:

Yes

32. Bottom material:

AISI 316

33. Type of pan:

Fixed

34. Filling:

Mechanical cock

35. Jacket filling:

Automatic

36. Steam pressure regulation:

Automatic - the pressure switch regulates the performance of the device

37. Type of drain valve:

conical

38. Overflow:

Yes

39. Manometer:

Yes

40. Water filling type:

Both cold and warm