

# Technical data sheet



## Product features

### Bain marie electric GN 1/1 - 150 without cabinet

<b>Model</b>	<b>SAP Code</b>	0000075
--------------	-----------------	---------



- Drain: Yes
- Safety drain: Yes
- Material: AISI 304 top plate, AISI 430 cladding
- Protection of controls: IPX4
- Maximum device temperature [°C]: 90

<b>SAP Code</b>	0000075	<b>Power electric [kW]</b>	1.500
<b>Net Width [mm]</b>	328	<b>Loading</b>	230 V / 1N - 50 Hz
<b>Net Depth [mm]</b>	609	<b>Number of GN / EN</b>	1
<b>Net Height [mm]</b>	290	<b>GN / EN size in device</b>	GN 1/1
<b>Net Weight [kg]</b>	10.00	<b>GN device depth</b>	150

# Technical data sheet



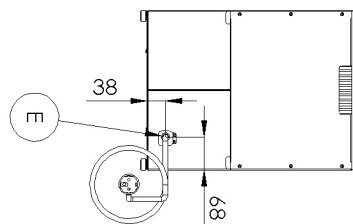
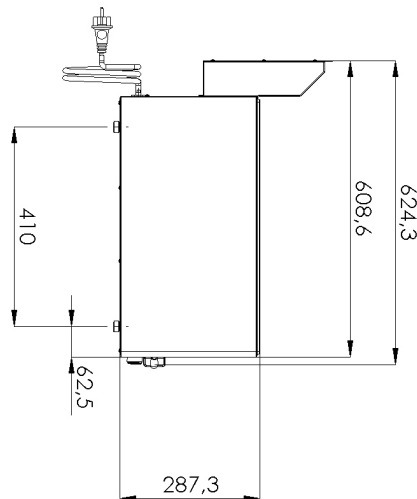
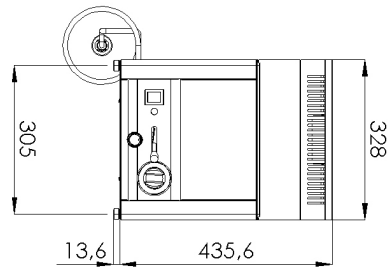
Technical drawing

Bain marie electric GN 1/1 - 150 without cabinet

Model

SAP Code

0000075



# Technical data sheet



## Product benefits

### Bain marie electric GN 1/1 - 150 without cabinet

Model

SAP Code

0000075

1

#### All-stainless design

long life  
resistance of AISI 304 stainless steel material  
the material does not cut

- savings on service interventions
- easy cleaning and maintenance of equipment

2

#### Degree of protection of the control elements IPX4

maintenance-free system  
resistance to splash water  
long life

- savings on service interventions
- greater job security for staff

3

#### Manipulation

easy portability

- flexibility in the kitchen, can be used for banquets

# Technical data sheet



## Technical parameters

### Bain marie electric GN 1/1 - 150 without cabinet

<b>Model</b>	<b>SAP Code</b>	00000075
--------------	-----------------	----------

**1. SAP Code:**

00000075

**2. Net Width [mm]:**

328

**3. Net Depth [mm]:**

609

**4. Net Height [mm]:**

290

**5. Net Weight [kg]:**

10.00

**6. Gross Width [mm]:**

650

**7. Gross depth [mm]:**

366

**8. Gross Height [mm]:**

440

**9. Gross Weight [kg]:**

12.00

**10. Device type:**

Electric unit

**11. Construction type of device:**

Table top

**12. Power electric [kW]:**

1.500

**13. Loading:**

230 V / 1N - 50 Hz

**14. Protection of controls:**

IPX4

**15. Material:**

AISI 304 top plate, AISI 430 cladding

**16. Indicators:**

operation and warm-up

**17. Worktop type:**

Molded - comfortable cleaning maintenance

**18. Worktop material:**

AISI 304

**19. Worktop Thickness [mm]:**

0.80

**20. Basin dimensions [mm x mm x mm]:**

328 x 609 x 290

**21. Maximum device temperature [°C]:**

90

**22. Minimum device temperature [°C]:**

30

**23. Adjustable feet:**

Yes

**24. Number of basins:**

1

**25. Basin material:**

AISI 304 - High quality stainless steel

**26. Drain:**

Yes

**27. Safety drain:**

Yes

**28. Number of GN / EN:**

1

# Technical data sheet



Technical parameters

**Bain marie electric GN 1/1 - 150 without cabinet**

<b>Model</b>	<b>SAP Code</b>	0000075
--------------	-----------------	---------

**29. GN / EN size in device:**

GN 1/1

**31. Heating location:**

Under the bottom of the bathtub

**30. GN device depth:**

150