

# Technical data sheet

## Product features



### Boiling kettle gas direct 50 l

Model

SAP Code

00002999



- Device type: Gas unit
- Device heating type: Direct
- Ignition: Piezo+veÄŕnÄŕ plamen
- Filling: Semi-automatic
- Jacket filling: Semi-automatic
- Drain: Yes
- Drain valve diameter: 2â€ â€
- Basin dimensions [mm x mm x mm]: d400 x 450
- Basin volume [l]: 50
- Usable volume [l]: 50

SAP Code	00002999	Type of gas	Natural gas, propane butane
Net Width [mm]	800	Basin volume [l]	50
Net Depth [mm]	705	Usable volume [l]	50
Net Height [mm]	900	Basin dimensions [mm x mm x mm]	d400 x 450
Net Weight [kg]	100.00	Device heating type	Direct
Power gas [kW]	15.500		

# Technical data sheet

Technical drawing

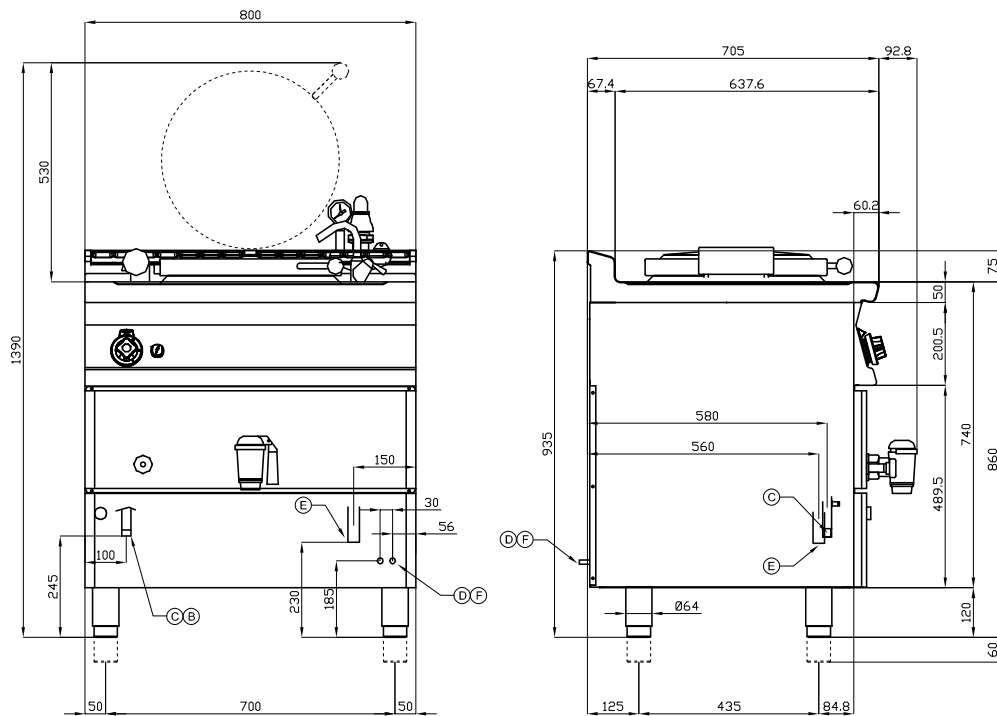


## Boiling kettle gas direct 50 l

Model

SAP Code

00002999



A	Data plate		C	Gas connection	ISO 7-1 3/4" M
D	Cold water connection	Ø10mm	E	Water drainage	Ø25mm
F	Hot water connection	Ø10mm			

# Technical data sheet

## Product benefits



### Boiling kettle gas direct 50 l

Model

SAP Code

00002999

1

#### Safety element “thermocouple”

safe service for staff  
there is no unnecessary gas leakage  
long life

- savings on service interventions
- easier and faster operation

2

#### Degree of protection of the control elements IPX5

maintenance-free system  
resistance to splash water  
long life

- savings on service interventions
- easy cleaning and maintenance of equipment

3

#### Smart handle

protection against scalding when lifting the lid  
easy handling to operate at any height

- high security
- fewer health problems caused by poor ergonomics

4

#### AISI 316 boiler bottom

long service life even in an aggressive salty environment

- savings on service interventions
- avoidance of losses due to interruptions in plant operation

5

#### All-stainless design including bottom

long service life even in an aggressive salty environment

- savings on service interventions
- easy cleaning and maintenance of equipment

6

#### Upper hygienic molding with an opening for the drainage of excess contents

spilled or overflowing liquids around the boiler neck can drain into the waste

- easier to keep the workplace clean
- easier to maintain hygiene standards
- easier cleaning of the boiler surface

# Technical data sheet

## Technical parameters



### Boiling kettle gas direct 50 l

Model

SAP Code

00002999

**1. SAP Code:**

00002999

**2. Net Width [mm]:**

800

**3. Net Depth [mm]:**

705

**4. Net Height [mm]:**

900

**5. Net Weight [kg]:**

100.00

**6. Gross Width [mm]:**

830

**7. Gross depth [mm]:**

770

**8. Gross Height [mm]:**

1110

**9. Gross Weight [kg]:**

110.00

**10. Device type:**

Gas unit

**11. Construction type of device:**

With substructure

**12. Power gas [kW]:**

15.500

**13. Ignition:**

Piezo+veřn plamen

**14. Type of gas:**

Natural gas, propane butane

**15. Protection of controls:**

IPX4

**16. Device color:**

Stainless steel

**17. Material:**

AISI 304 top plate and cladding

**18. Indicators:**

operation and warm-up

**19. Drain valve diameter:**

2â€ â€

**20. Worktop type:**

Molded - comfortable cleaning maintenance

**21. Worktop material:**

AISI 304

**22. Worktop Thickness [mm]:**

2.00

**23. Device heating type:**

Direct

**24. Basin volume [l]:**

50

**25. Basin dimensions [mm x mm x mm]:**

d400 x 450

**26. Power control type:**

infinitely adjustable power

**27. Service accessibility:**

Trough the frontal panel

**28. Safety element:**

safety element â€“ thermocouple

# Technical data sheet

Technical parameters



## Boiling kettle gas direct 50 l

**Model**

**SAP Code**

00002999

**29. Safety thermocouple:**

Yes

**30. Adjustable feet:**

Yes

**31. Bottom material:**

AISI 316

**32. Type of pan:**

Fixed

**33. Usable volume [l]:**

50

**34. Filling:**

Semi-automatic

**35. Jacket filling:**

Semi-automatic

**36. Type of drain valve:**

conical

**37. Overflow:**

Yes

**38. Manometer:**

Yes

**39. Water filling type:**

Both cold and warm

**40. Drain:**

Yes